

EUROPEAN PATENT OFFICE
U.S. PATENT AND TRADEMARK OFFICE

CPC NOTICE OF CHANGES 1932

DATE: AUGUST 1, 2026

PROJECT MP12243

The following classification changes will be effected by this Notice of Changes:

<u>Action</u>	<u>Subclass</u>	<u>Group(s)</u>
SCHEME:		
Titles Changed:	F15B	11/00, 11/02, 11/042, 11/044, 11/055, 11/072, 11/10, 11/121, 11/168
DEFINITIONS:		
Definitions New:	F15B	11/006, 2011/0243, 2011/0246, 11/0325, 11/0365, 11/0413, 11/046, 11/048, 11/064, 11/068, 11/072, 11/0725, 11/076, 11/10, 11/121, 11/122, 11/123, 11/125, 11/126, 11/127, 11/128, 11/13, 11/166, 11/167, 11/183, 11/186
Definitions Modified:	F15B	11/00, 11/003, 11/022, 11/024, 11/028, 11/032, 11/036, 11/0406, 11/042, 11/0423, 11/0426, 11/044, 11/0445, 11/05, 11/055, 11/06, 11/12, 11/15, 11/16, 11/162, 11/163, 11/165, 11/168, 11/17, 11/20, 11/205, 11/22

No other subclasses/groups are impacted by this Notice of Changes.

This Notice of Changes includes the following [Check the ones included]:

1. CLASSIFICATION SCHEME CHANGES

- A. New, Modified or Deleted Group(s)
- B. New, Modified or Deleted Warning(s)
- C. New, Modified or Deleted Note(s)
- D. New, Modified or Deleted Guidance Heading(s)

2. DEFINITIONS

- A. New or Modified Definitions (Full definition template)
- B. Modified or Deleted Definitions (Definitions Quick Fix)

3. REVISION CONCORDANCE LIST (RCL)

4. CHANGES TO THE CPC-TO-IPC CONCORDANCE LIST (CICL)

5. CHANGES TO THE CROSS-REFERENCE LIST (CRL)

CPC NOTICE OF CHANGES 1932

DATE: AUGUST 1, 2026

PROJECT MP12243

1. CLASSIFICATION SCHEME CHANGES

A. New, Modified or Deleted Group(s)

SUBCLASS F15B - SYSTEMS ACTING BY MEANS OF FLUIDS IN GENERAL; FLUID-PRESSURE ACTUATORS, e.g. SERVO MOTORS; DETAILS OF FLUID-PRESSURE SYSTEMS, NOT OTHERWISE PROVIDED FOR

<u>Type*</u>	<u>Symbol</u>	<u>Indent Level Number of dots (e.g. 0, 1, 2)</u>	<u>Title</u> <u>“CPC only” text should normally be enclosed in {curly brackets}**</u>	<u>Transferred to#</u>
M	F15B11/00	0	Servomotor systems without provision for follow-up action {; Circuits therefor}(F15B3/00 takes precedence)	
M	F15B11/02	1	Systems essentially incorporating special features for controlling the speed or the actuating force of an output member	
M	F15B11/042	3	by means in the feed line (F15B11/046, F15B11/05 take precedence)	
M	F15B11/044	3	by means in the return line (F15B11/046, F15B11/05 take precedence)	
M	F15B11/055	4	{by adjusting the pump output or bypass (F15B11/165 takes precedence)}	
M	F15B11/072	2	Combined pneumatic-hydraulic systems	
M	F15B11/10	2	in which the servomotor position is a function of the pressure {; Pressure regulators as operating means therefor}	
M	F15B11/121	3	{providing distinct intermediate positions}	
U	F15B11/13	3	using {separate dosing} chambers of predetermined volume	
M	F15B11/168	3	{with at least one load sense pressure being derived from a work port load pressure but not being the work port load pressure itself}	

*N = new entries where reclassification into entries is involved; C = entries with modified file scope where reclassification of documents from the entries is involved; Q = new entries which are firstly populated with documents via administrative transfers from deleted (D) entries. Afterwards, the transferred documents into the Q entry will either stay or be moved to more appropriate entries, as determined by intellectual reclassification; T = existing entries with enlarged file scope, which receive documents from C or D entries, e.g. when a limiting reference is removed from the entry title; M = entries with no change to the file scope (no reclassification); D = deleted entries; F = frozen entries will be deleted once reclassification of documents from the entries is completed; U = entries that are unchanged.

NOTES:

- **No {curly brackets} are used for titles in CPC only subclasses, e.g. C12Y, A23Y; 2000 series symbol titles of groups found at the end of schemes (orthogonal codes); or the Y section titles. The {curly brackets} are used for 2000 series symbol titles found interspersed throughout the main trunk schemes (breakdown codes).
- U groups: it is obligatory to display the required “anchor” symbol (U group), i.e. the entry immediately preceding a new group or an array of new groups to be created (in case new groups are not clearly subgroups of C-type groups). Always include the symbol, indent level and title of the U group in the table above.

CPC NOTICE OF CHANGES 1932

DATE: AUGUST 1, 2026

PROJECT MP12243

- All entry types should be included in the scheme changes table above for better understanding of the overall scheme change picture. Symbol, indent level, and title are required for all types.
- “Transferred to” column must be completed for all C, D, F, and Q type entries. F groups will be deleted once reclassification is completed.
- When multiple symbols are included in the “Transferred to” column, avoid using ranges of symbols in order to be as precise as possible.
- For administrative transfer of documents, the following text should be used: “<administrative transfer to XX>”, “<administrative transfer to XX and YY simultaneously>”, or “<administrative transfer to XX, YY, ...and ZZ simultaneously>” when administrative transfer of the same documents is to more than one place.
- Administrative transfer to main trunk groups is assumed to be the source allocation type, unless otherwise indicated.
- Administrative transfer to 2000/Y series groups is assumed to be “additional information”.
- If needed, instructions for allocation type should be indicated within the angle brackets using the abbreviations “ADD” or “INV”: <administrative transfer to XX ADD>, <administrative transfer to XX INV>, or <administrative transfer to XX ADD, YY INV, ... and ZZ ADD simultaneously>.
- In certain situations, the “D” entries of 2000-series or Y-series groups may not require a destination (“Transferred to”) symbol, however it is required to specify “<no transfer>” in the “Transferred to” column for such cases.
- For finalization projects, the deleted “F” symbols should have <no transfer> in the “Transferred to” column.

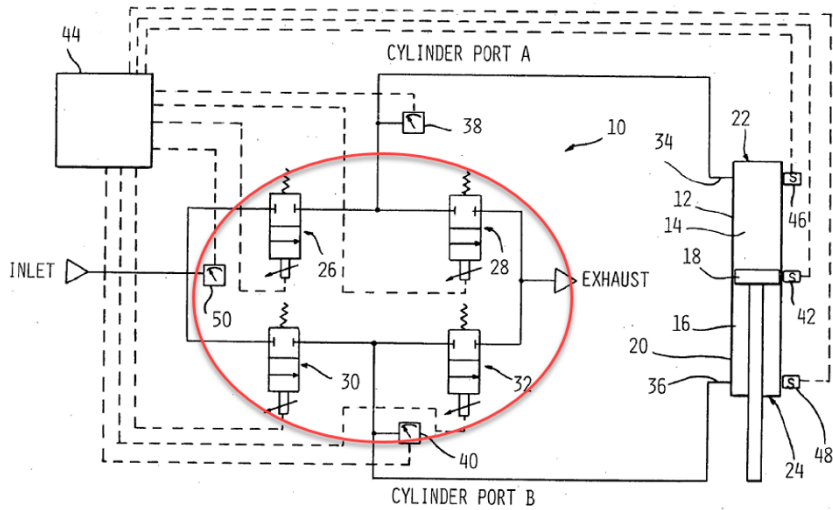
2. A. DEFINITIONS (new)

F15B11/006

Definition statement

This place covers:

Illustrative example of subject matter classified in this place:



F15B2011/0243

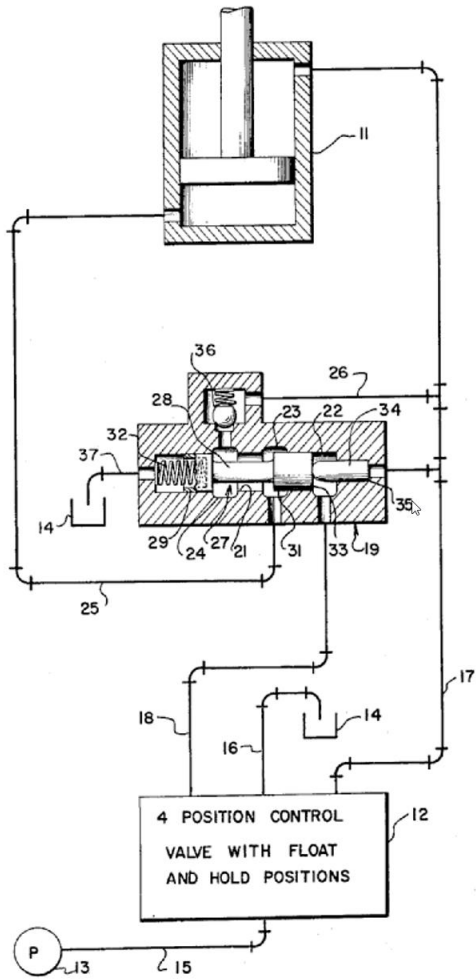
Definition statement

This place covers:

Illustrative example of subject matter classified in this place:

DATE: AUGUST 1, 2026

PROJECT MP12243

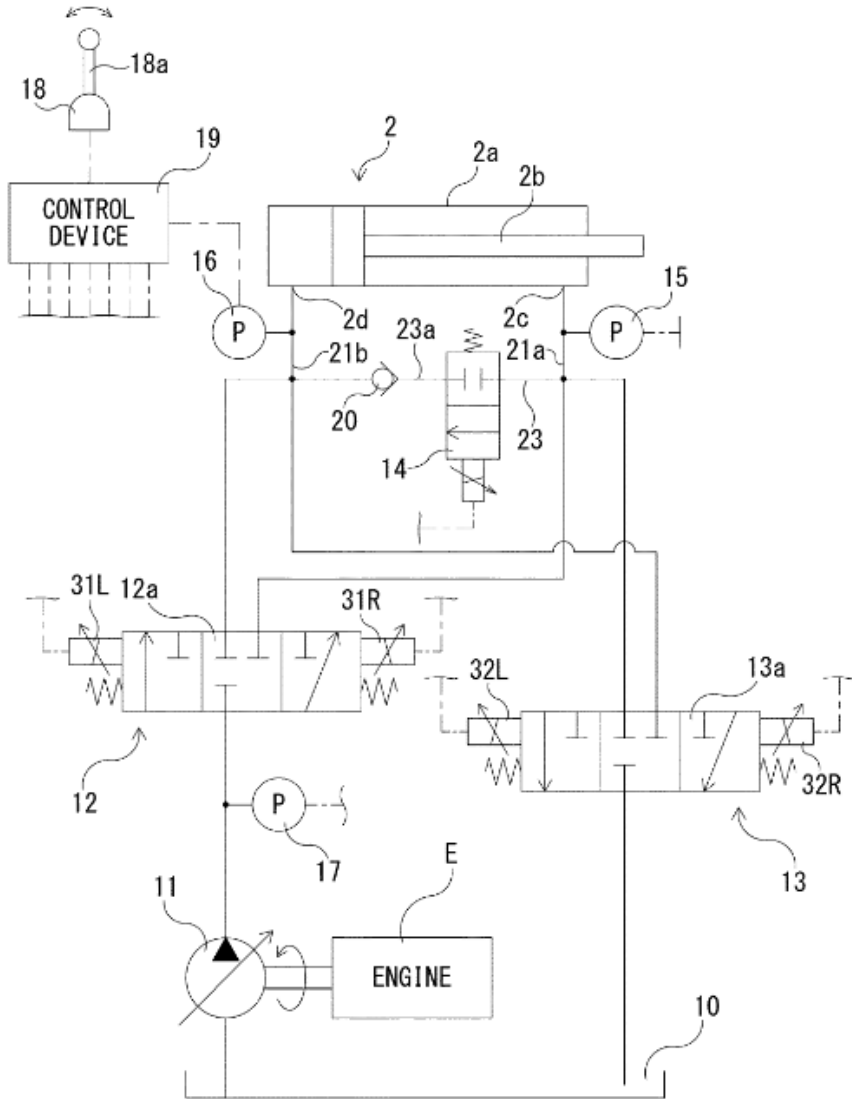


F15B2011/0246

Definition statement

This place covers:

Illustrative example of subject matter classified in this place:



F15B11/0325

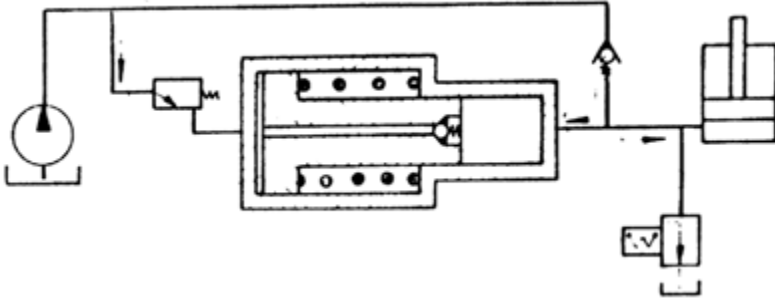
Definition statement

This place covers:

Illustrative example of subject matter classified in this place:

DATE: AUGUST 1, 2026

PROJECT MP12243

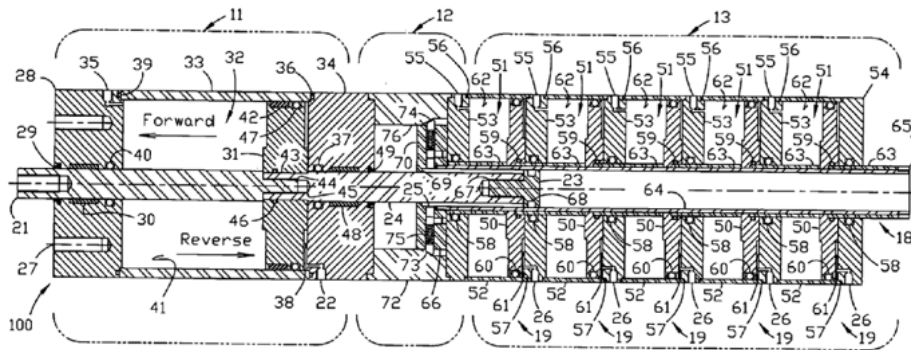


F15B11/0365

Definition statement

This place covers:

Illustrative example of subject matter classified in this place:

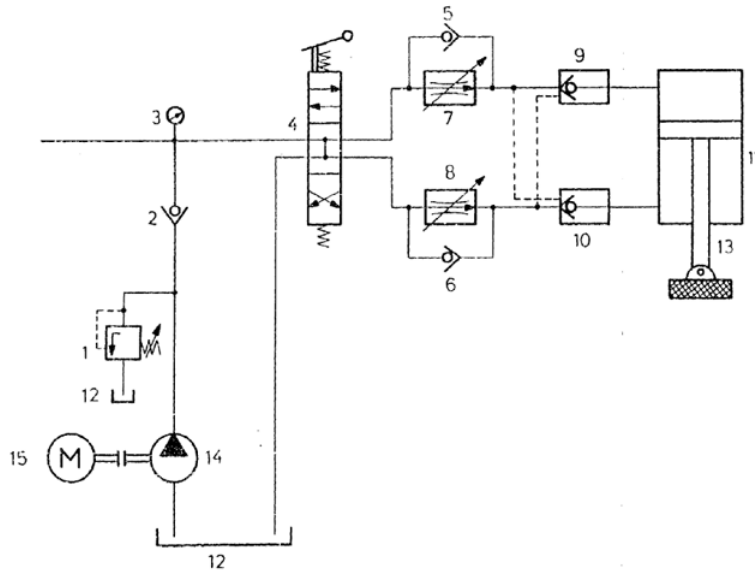


F15B11/0413

Definition statement

This place covers:

Illustrative example of subject matter classified in this place:

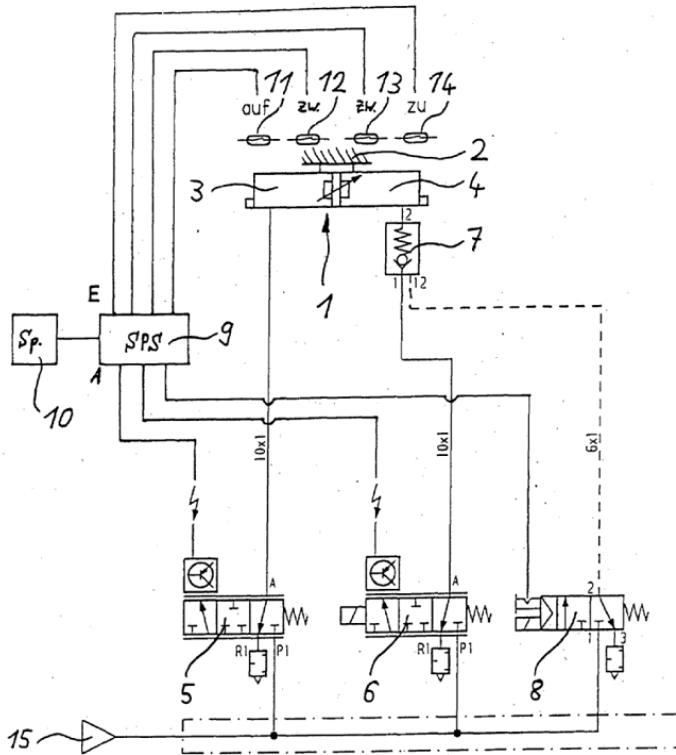


F15B11/046

Definition statement

This place covers:

Illustrative example of subject matter classified in this place:



F15B11/048

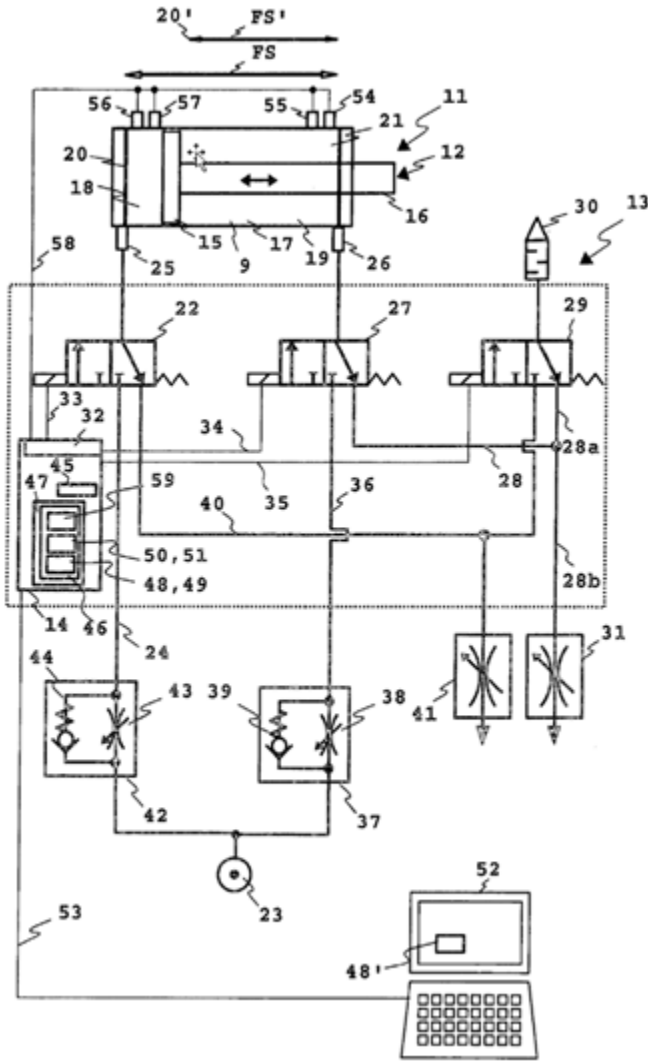
Definition statement

This place covers:

Illustrative example of subject matter classified in this place:

DATE: AUGUST 1, 2026

PROJECT MP12243



F15B11/064

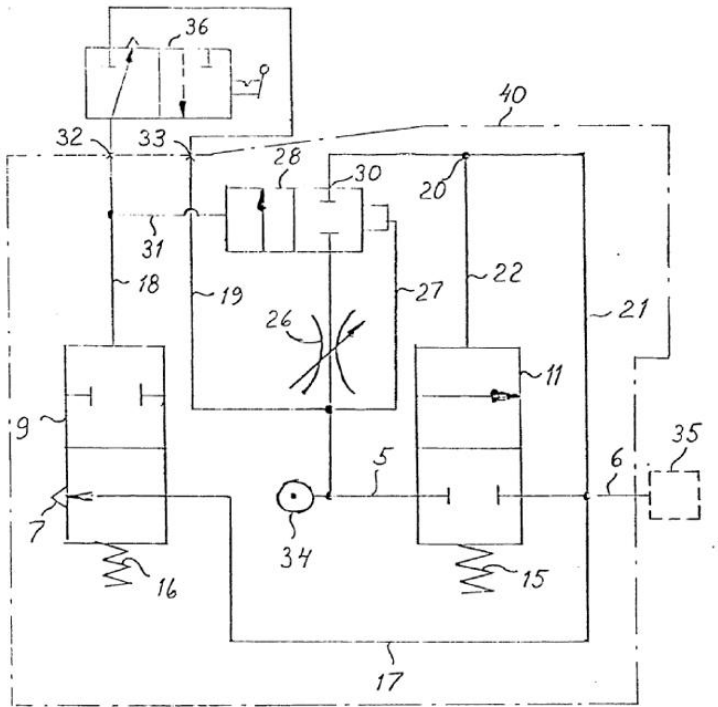
Definition statement

This place covers:

Illustrative example of subject matter classified in this place:

DATE: AUGUST 1, 2026

PROJECT MP12243



F15B11/072

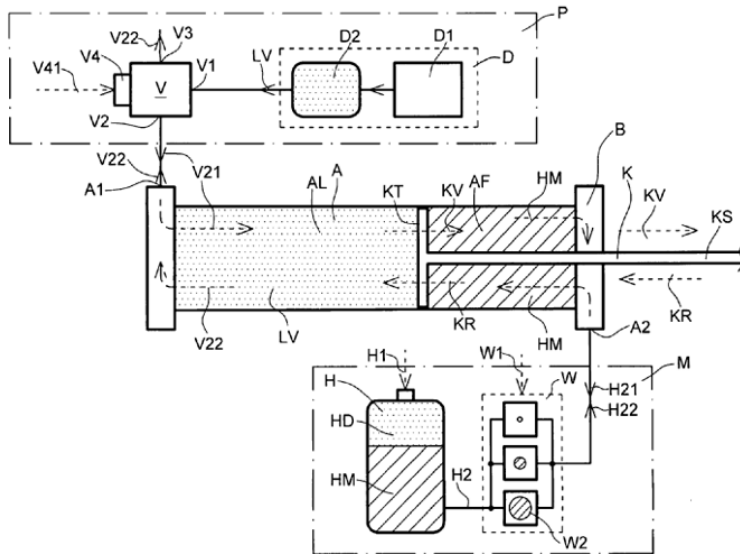
Definition statement

This place covers:

Illustrative example of subject matter classified in this place:

DATE: AUGUST 1, 2026

PROJECT MP12243



References

Informative references

Attention is drawn to the following places, which may be of interest for search:

<p>Servomotor systems without provision for follow-up action for controlling the actuating force of an output member by means of fluid-pressure converters</p>	<p>F15B11/032</p>
--	-----------------------------------

F15B11/0725

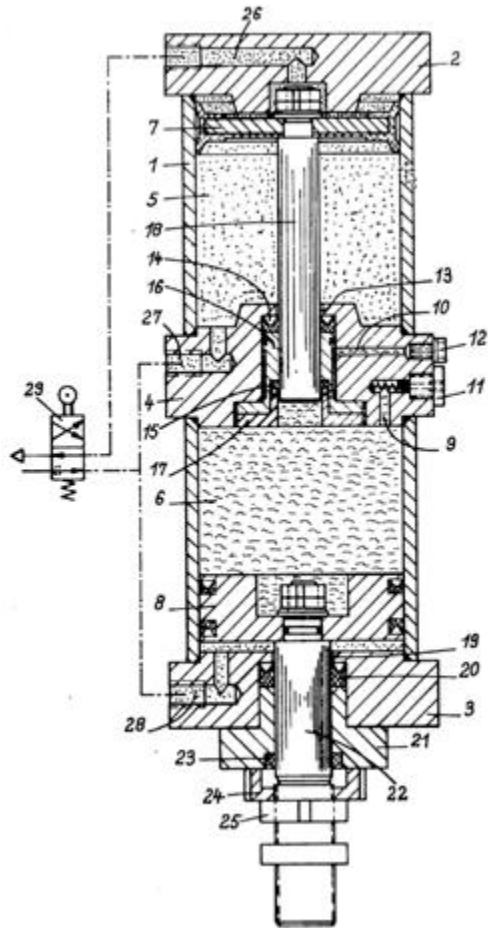
Definition statement

This place covers:

Illustrative example of subject matter classified in this place:

DATE: AUGUST 1, 2026

PROJECT MP12243



F15B11/076

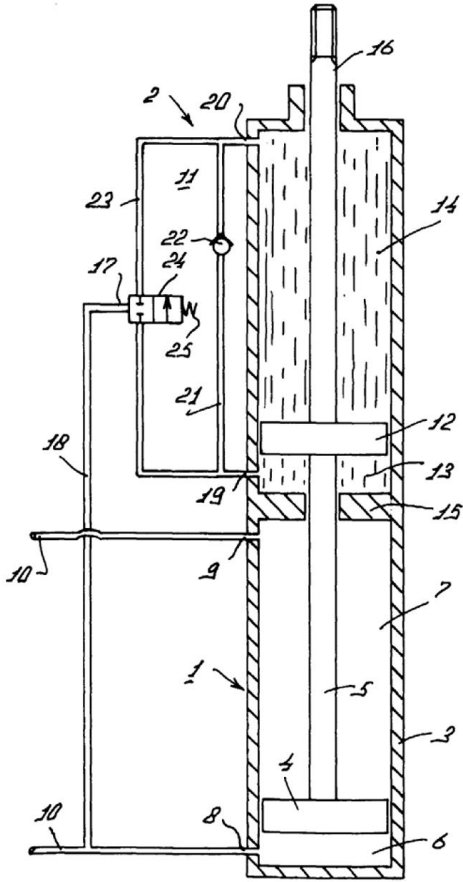
Definition statement

This place covers:

Illustrative example of subject matter classified in this place:

DATE: AUGUST 1, 2026

PROJECT MP12243



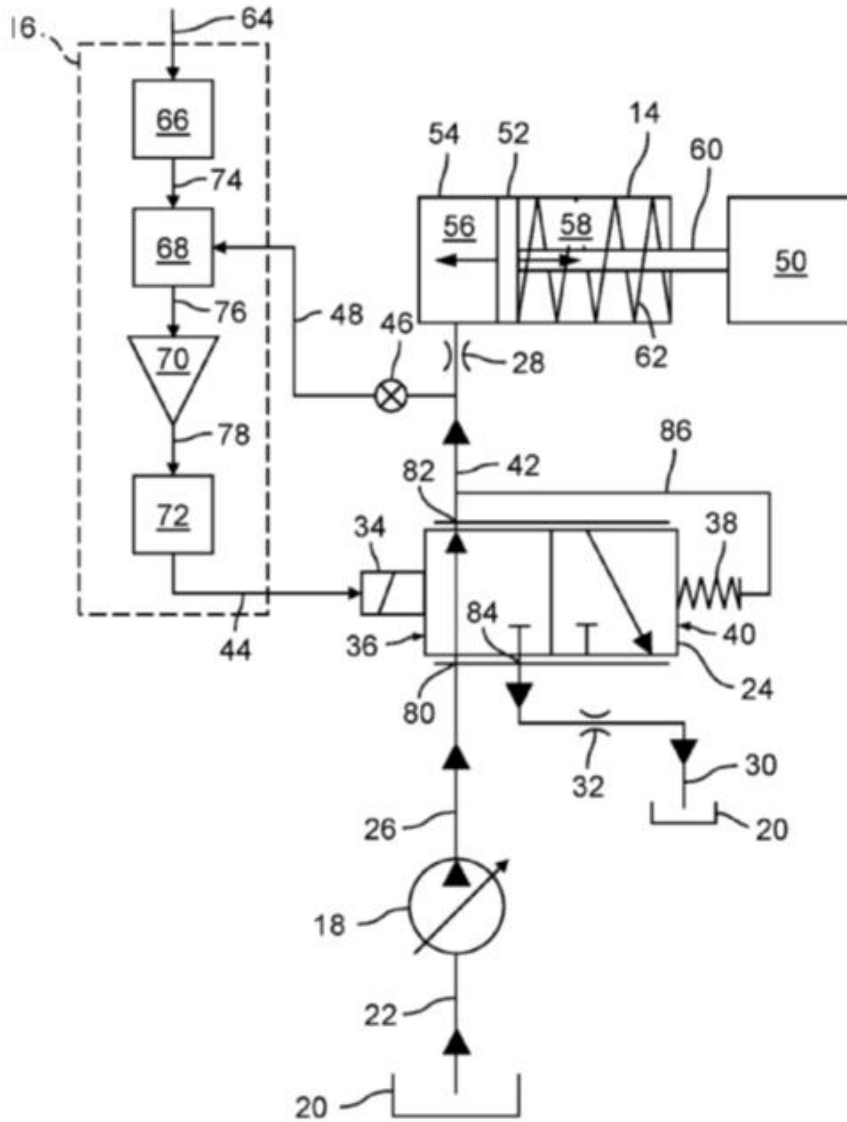
F15B11/10

Definition statement

This place covers:

Servomotor systems without provision for follow-up action, with only one servomotor, in which the servomotor position is a function of the pressure. This place also covers pressure regulators therefor. The device itself may be a position indicating system.

Illustrative example of subject matter classified in this place:



F15B11/121

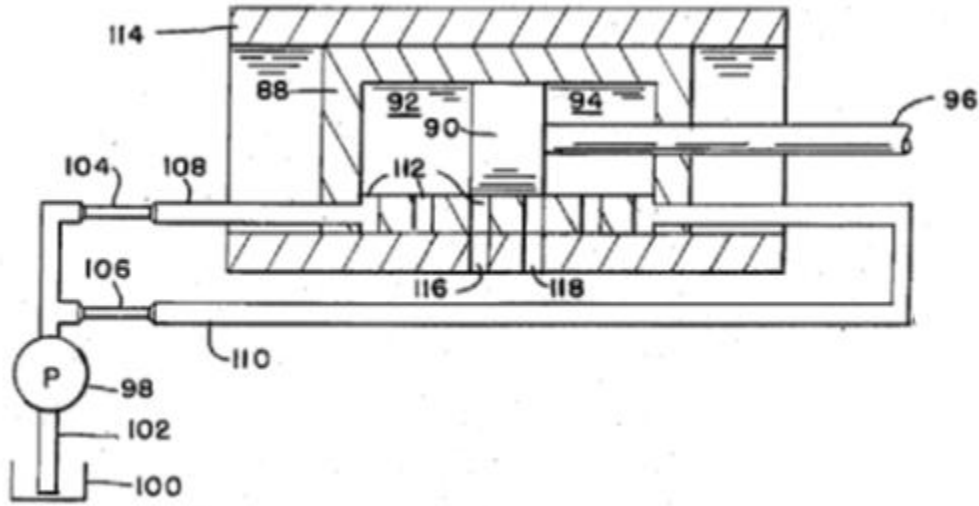
Definition statement

This place covers:

Illustrative example of subject matter classified in this place:

DATE: AUGUST 1, 2026

PROJECT MP12243



References

Informative references

Attention is drawn to the following places, which may be of interest for search:

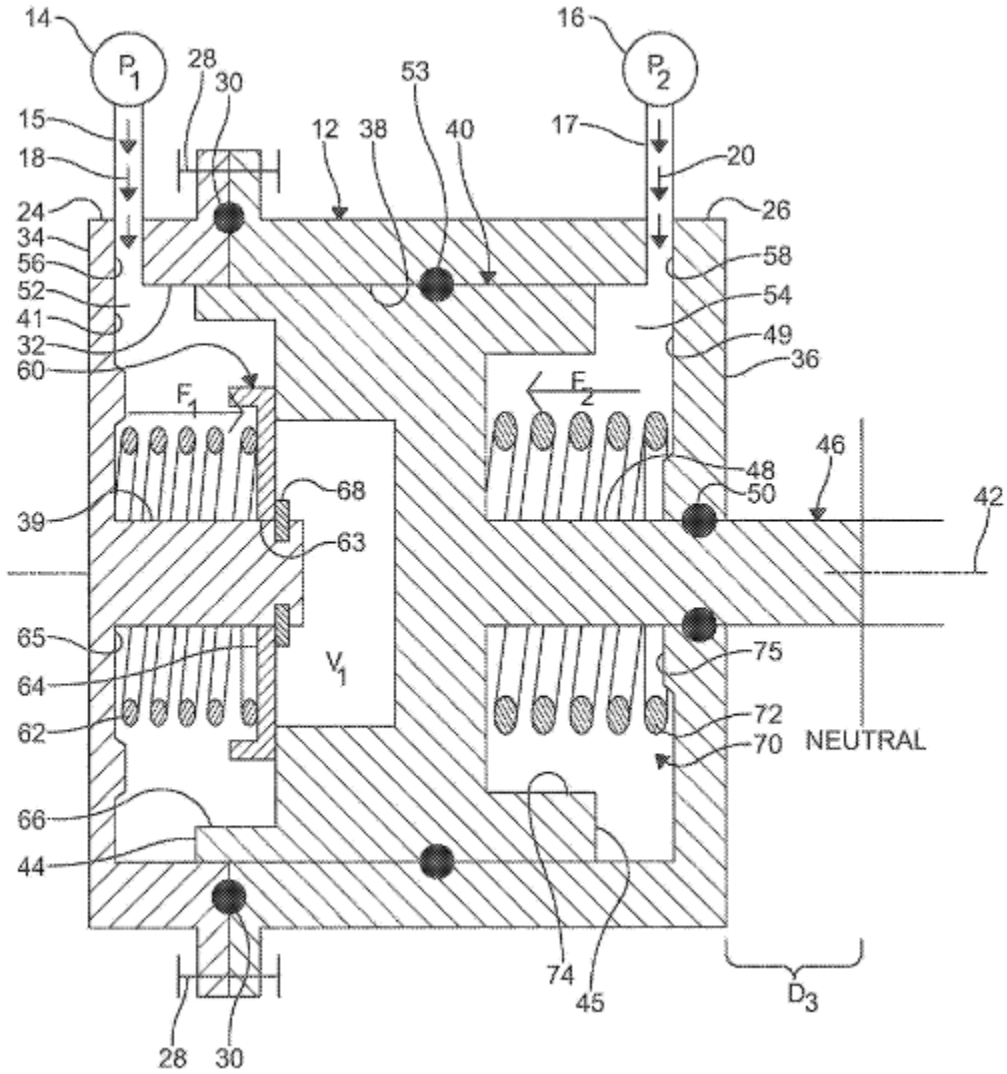
Servomotor systems without provision for follow-up action with only one servomotor providing distinct intermediate positions or with step-by-step action using separate dosing chambers of predetermined volume	F15B11/13
---	---------------------------

F15B11/122

Definition statement

This place covers:

Illustrative example of subject matter classified in this place:

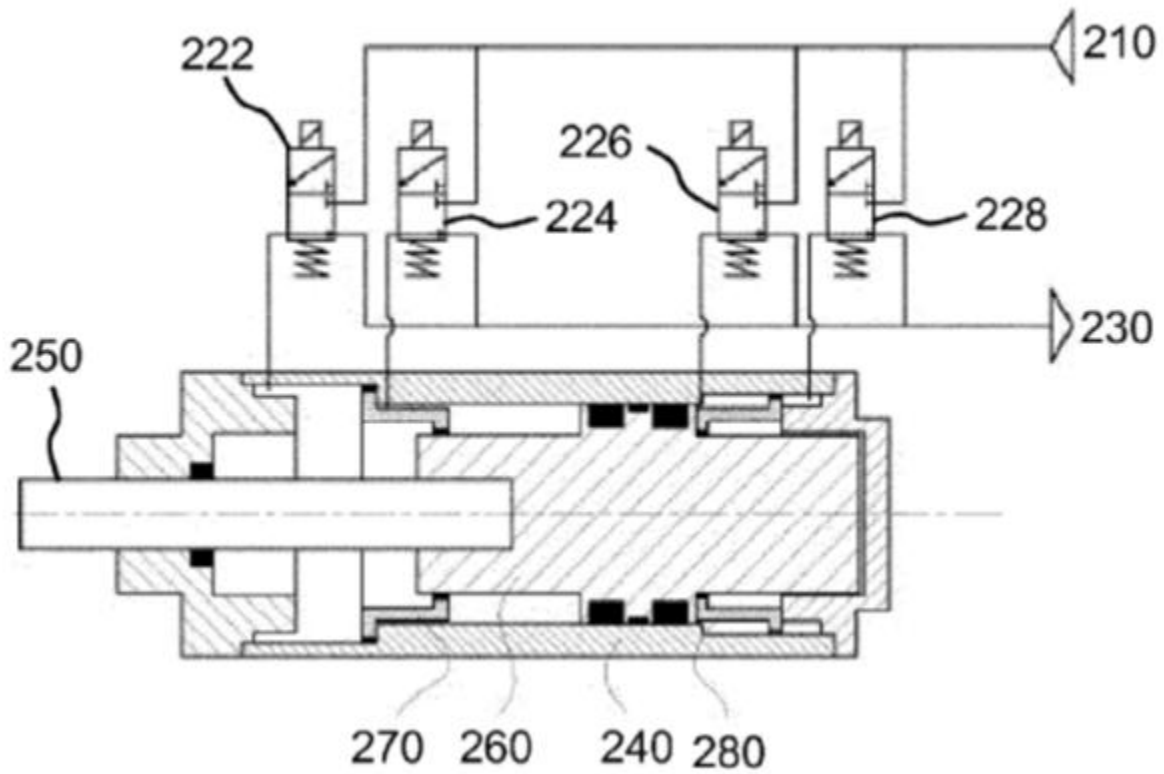


F15B11/123

Definition statement

This place covers:

Illustrative example of subject matter classified in this place:



F15B11/125

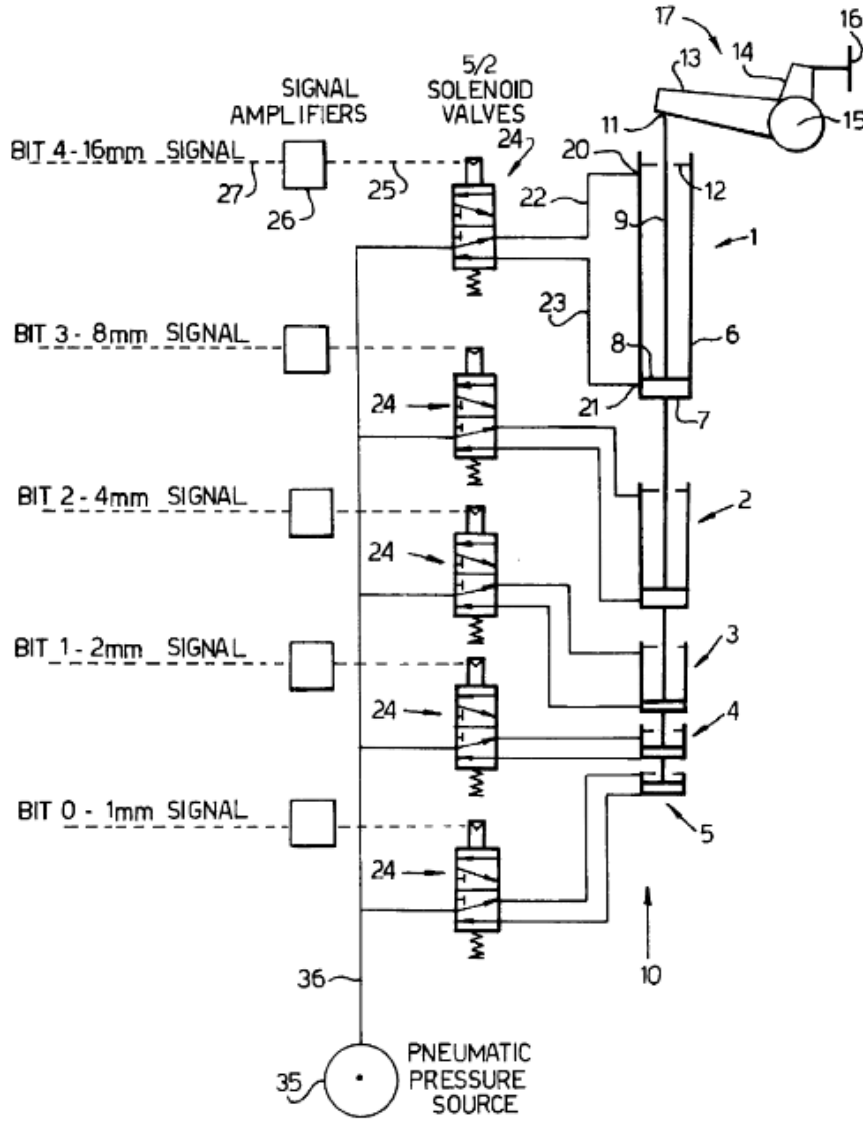
Definition statement

This place covers:

Illustrative example of subject matter classified in this place:

DATE: AUGUST 1, 2026

PROJECT MP12243



F15B11/126

Definition statement

This place covers:

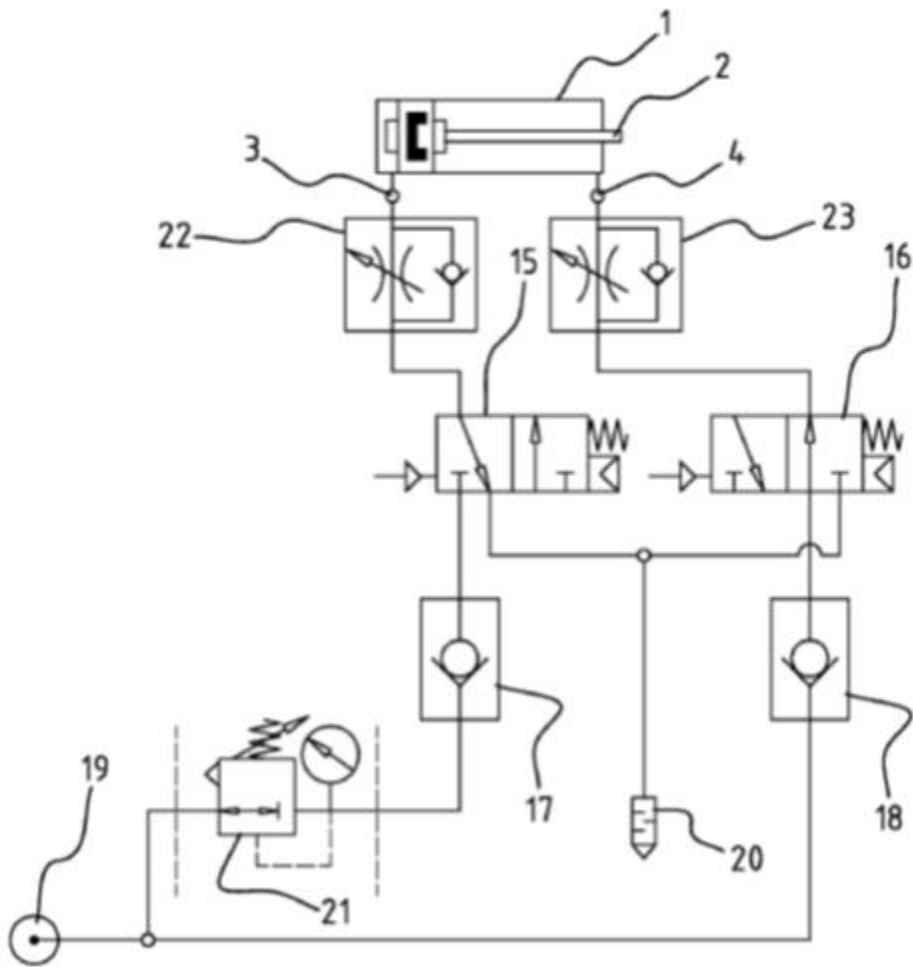
Illustrative examples of subject matter classified in this place:

- 1.

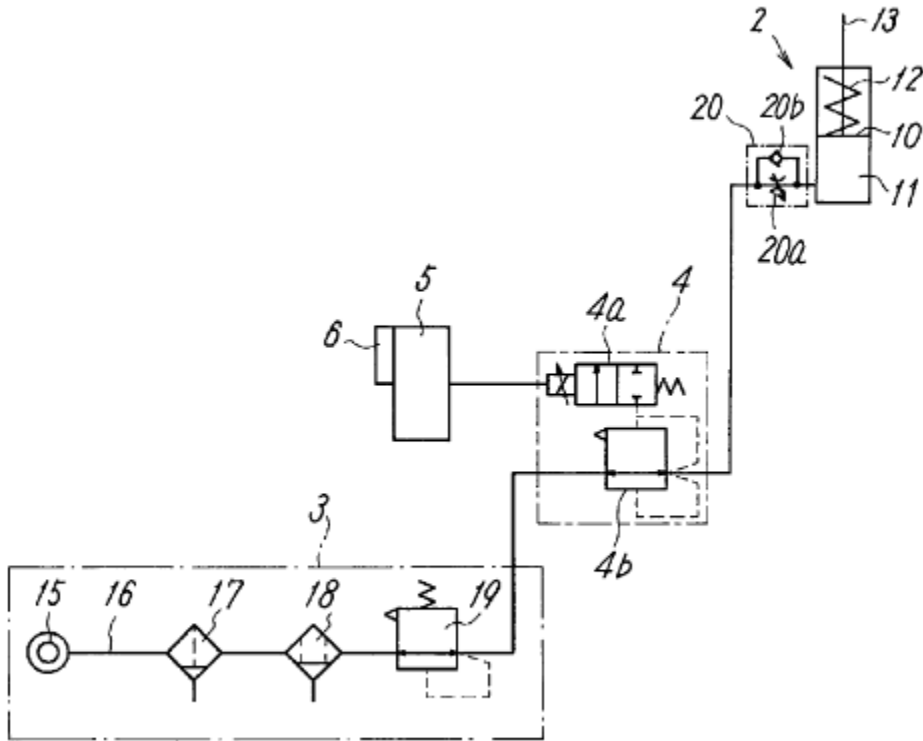
CPC NOTICE OF CHANGES 1932

DATE: AUGUST 1, 2026

PROJECT MP12243



2.



References

Limiting references

This place does not cover:

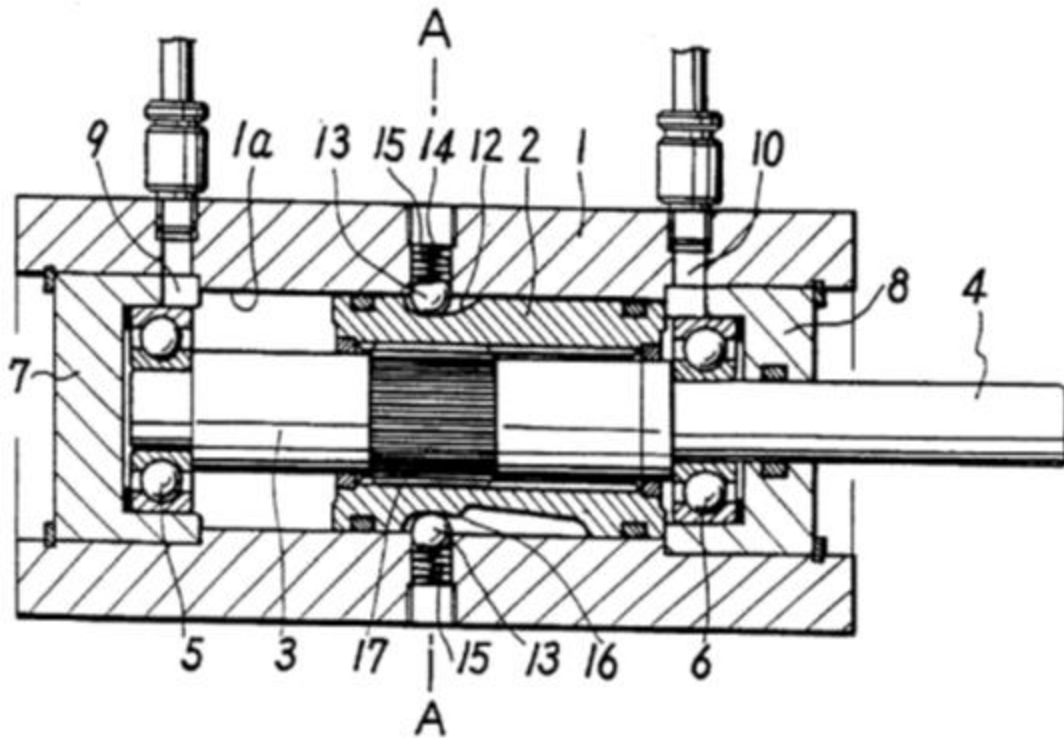
<p>Servomotor systems without provision for follow-up action with only one servomotor providing distinct intermediate positions by means of digital actuators, i.e. actuators in which the total stroke is the sum of individual strokes</p>	<p>F15B11/125</p>
--	-------------------

F15B11/127

Definition statement

This place covers:

Illustrative example of subject matter classified in this place:

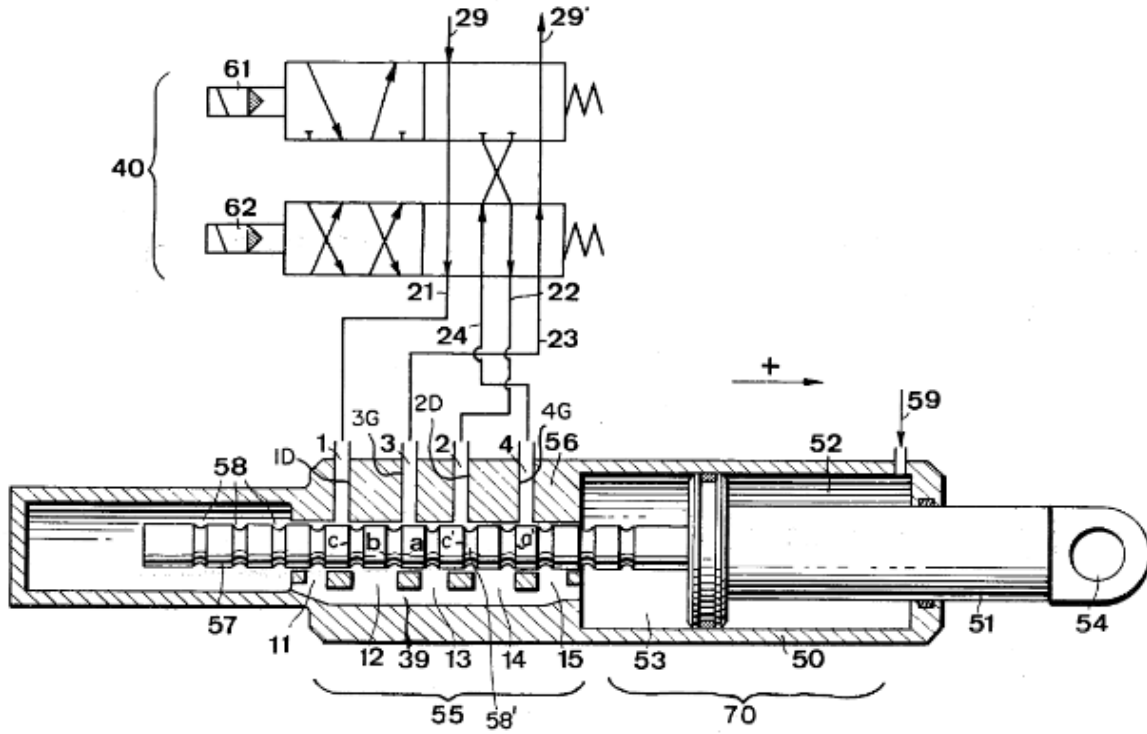


F15B11/128

Definition statement

This place covers:

Illustrative example of subject matter classified in this place:

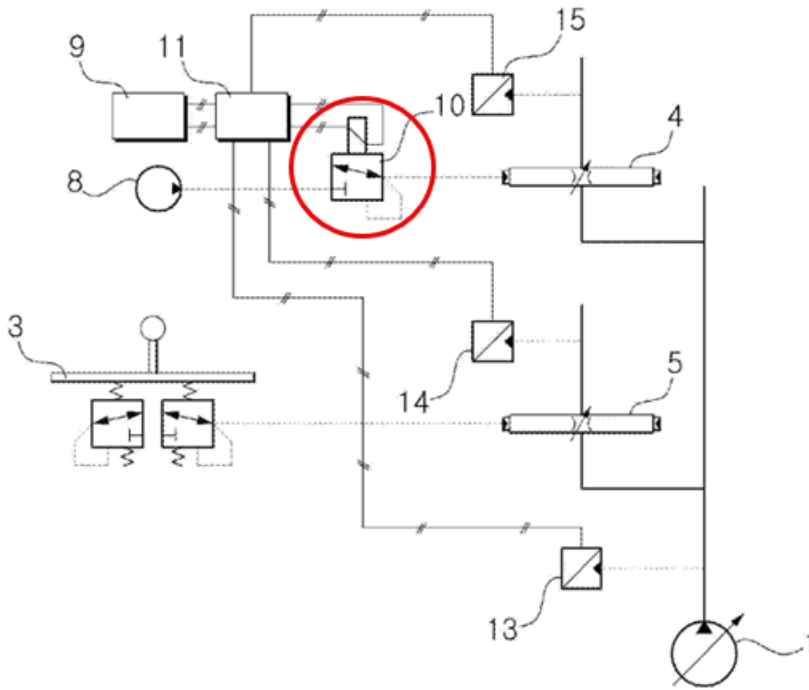


F15B11/13

Definition statement

This place covers:

Illustrative example of subject matter classified in this place:

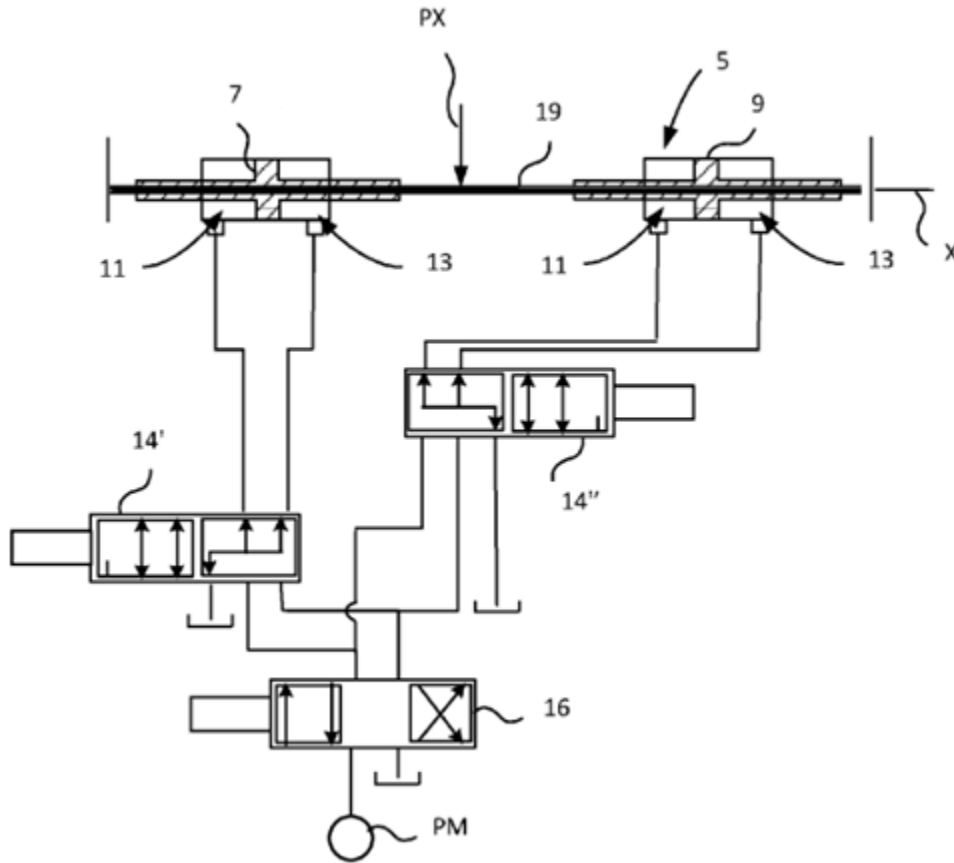


F15B11/167

Definition statement

This place covers:

Illustrative example of subject matter classified in this place:

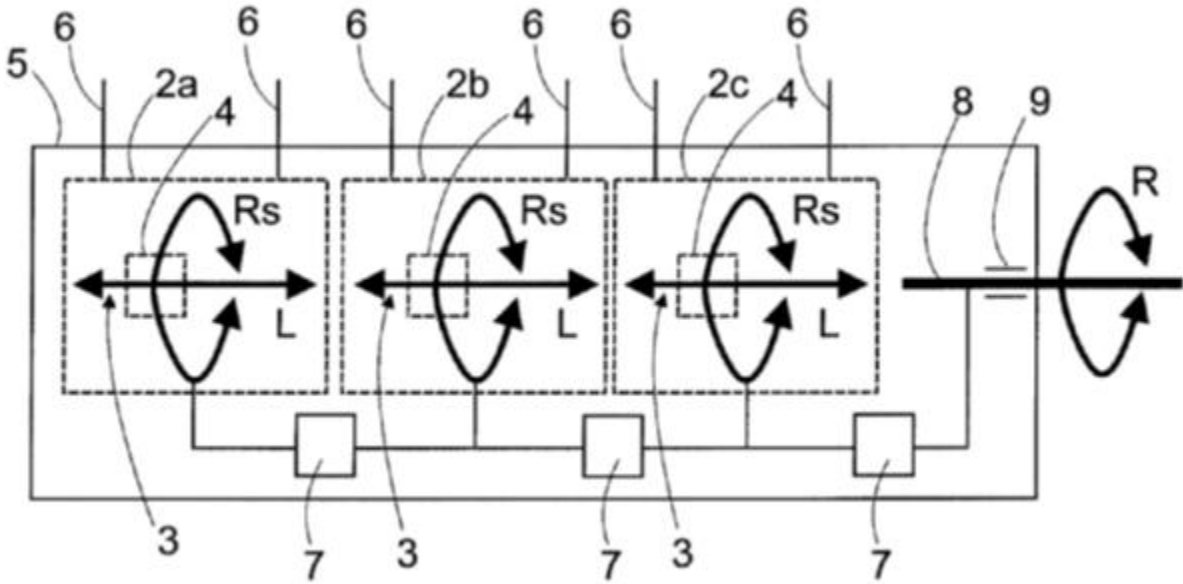


F15B11/186

Definition statement

This place covers:

Illustrative example of subject matter classified in this place:



DATE: AUGUST 1, 2026

PROJECT MP12243

2. A. DEFINITIONS (modified)

F15B11/00

Definition statement

Replace: The existing Definition statement with the following updated text.

Servomotor systems and fluid circuits of general application, without provision for follow-up action, for moving a servomotor.

Insert: The following new Informative references section.

References

Informative references

Attention is drawn to the following places, which may be of interest for search:

Agricultural machines	A01B
Control arrangements for fluid-driven presses	B30B15/16
Resilient vehicle suspensions having means for adjusting the spring or vibration-damper characteristics	B60G17/00
Hydraulic brakes	B60T11/10
Power-assisted or power-driven steering using fluid	B62D5/06
Hydraulic lifting devices movable with their loads	B66F9/22
Hydraulic or pneumatic drives for dredgers or soil-shifting machines	E02F9/22
External control of clutches by fluid pressure	F16D48/02
Hydrostatic control of exclusively fluid gearing	F16H61/40
Valves	F16K

DATE: AUGUST 1, 2026

PROJECT MP12243

Special rules of classification

Replace: The existing Special rules text with the following updated text.

The main group **F15B11/00** is complemented by the indexing group **F15B2211/00** which is used for classifying additional information only.

The reference to **F15B3/00** is non-limiting in main group **F15B11/00**. CPC will be updated once this inconsistency is resolved in IPC.

Glossary of terms

Replace: The existing Glossary of terms table with the following updated table.

servomotor	fluid-pressure actuator, e.g. a piston and a cylinder, directly controlled by a valve or other device, e.g. a pump, which is responsive to operation of an initial controlling member. The initial controlling member may be adjacent to the servomotor or at a distance, and may be, for example, a hand lever or a joystick.
------------	--

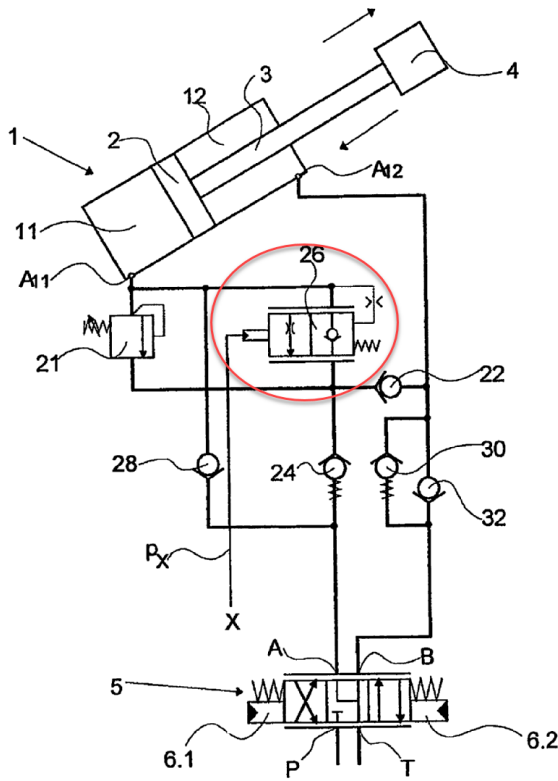
F15B11/003

Definition statement

Replace: The existing Definition statement with the following updated text and image.

Releasable check valves and proportional braking valves.

Illustrative example of subject matter classified in this place:



References

Informative references

Replace: The existing Informative references table with the following updated table.

Details of locking valves or other detent devices of servomotor systems	F15B13/01
Load-holding valves as a component in a fluid pressure circuit of a servomotor	F15B2211/30515

Delete: The entire Special rules section.

DATE: AUGUST 1, 2026

PROJECT MP12243

Synonyms and Keywords

In patent documents, the following words/expressions are often used as synonyms:

Replace: The existing Synonyms and Keywords text with the following updated text.

- "load holding valve" and "releasable check valve"

F15B11/022

Insert: The following new Definition statement.

Definition statement

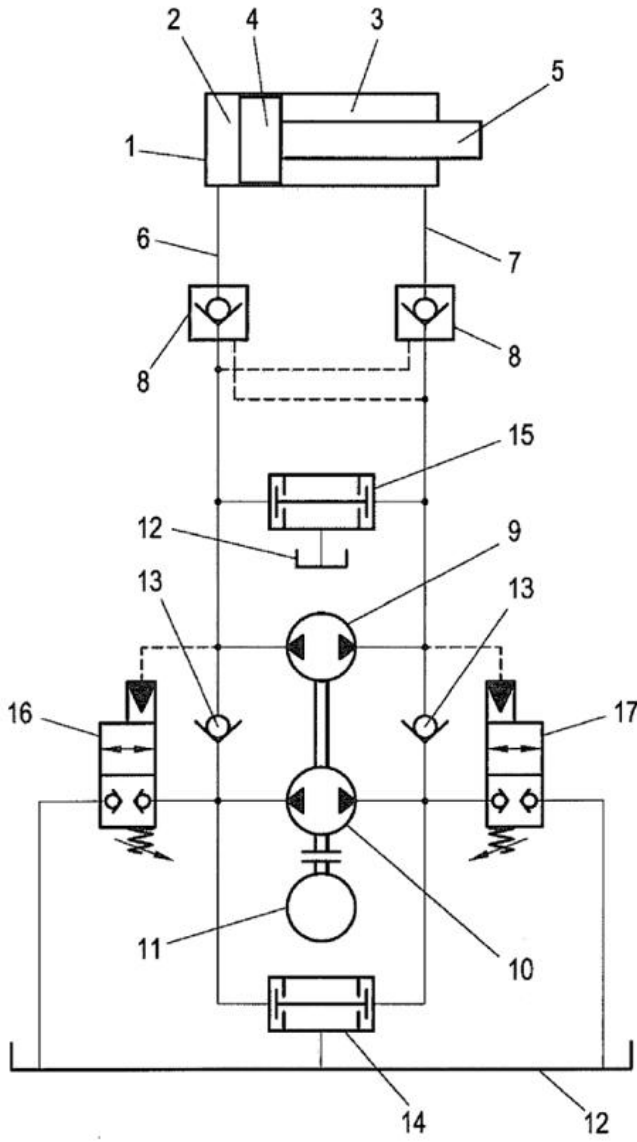
This place covers:

Illustrative example of subject matter classified in this place:

CPC NOTICE OF CHANGES 1932

DATE: AUGUST 1, 2026

PROJECT MP12243



DATE: AUGUST 1, 2026

PROJECT MP12243

References

Limiting references

Replace: The existing Limiting references table with the following updated table.

Servomotor systems without provision for follow-up action incorporating special features for controlling the actuating force of an output member by means of fluid-pressure converters increasing the working force after an approach stroke	F15B11/0325
--	-----------------------------

Informative references

Replace: The existing Informative references table with the following updated table.

Circuits for combined control of output members in servomotor systems	F15B2211/775
---	------------------------------

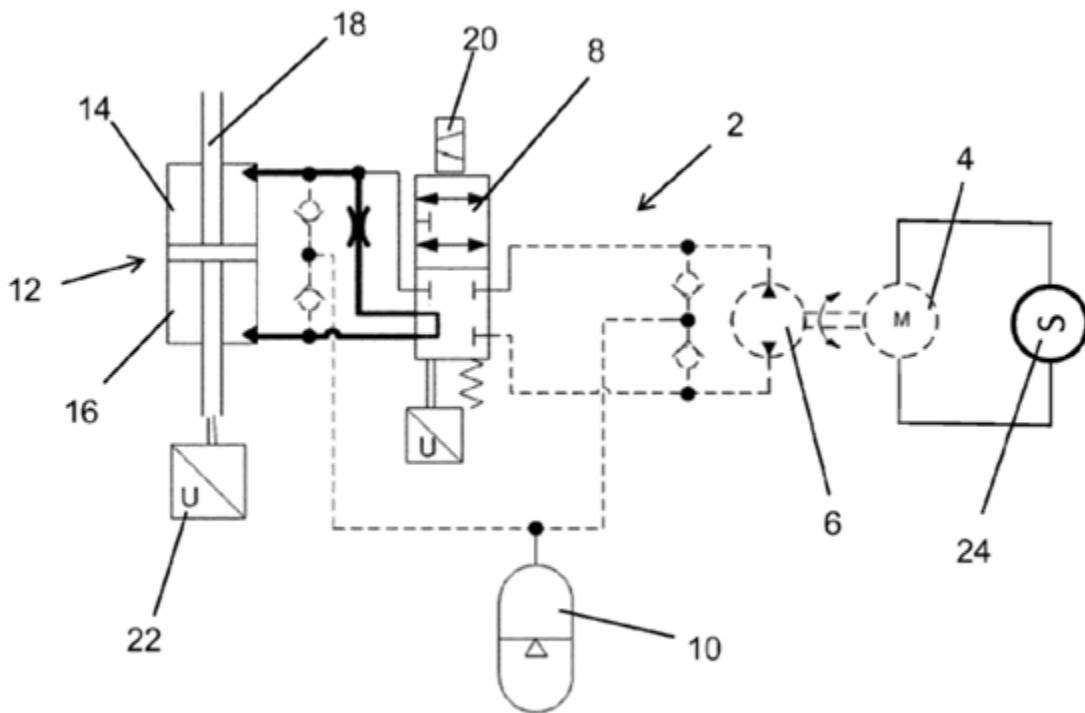
F15B11/024

Insert: The following new Definition statement.

Definition statement

This place covers:

Illustrative example of subject matter classified in this place:



References

Informative references

Replace: The existing Informative references table with the following updated table.

Valves for interconnecting the fluid chambers of an actuator	F15B13/021
--	----------------------------

DATE: AUGUST 1, 2026

PROJECT MP12243

Circuits for servomotor systems with directional control valves having a regenerative position	F15B2211/3133
--	-------------------------------

F15B11/028

References

Insert: The following new Limiting references section.

Limiting references

This place does not cover:

Servomotor systems for controlling the speed or actuating force of an output member by means of differential connection of the servomotor lines, e.g. regenerative circuits	F15B11/024
---	----------------------------

Informative references

Replace: The existing Informative references table with the following updated table.

Circuits for control of force or torque of an output member in servomotor systems	F15B2211/76
---	-----------------------------

Delete: The entire Special rules section.

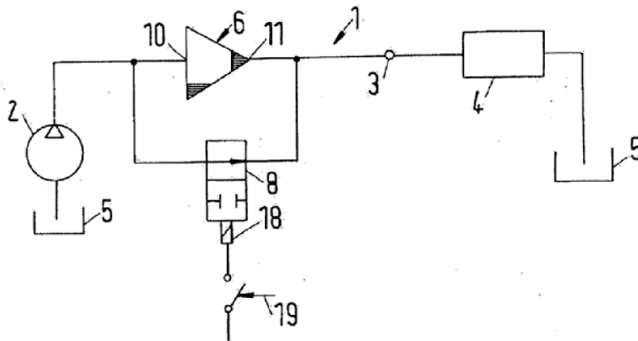
F15B11/032

Insert: The following new Definition statement.

Definition statement

This place covers:

Illustrative example of subject matter classified in this place:



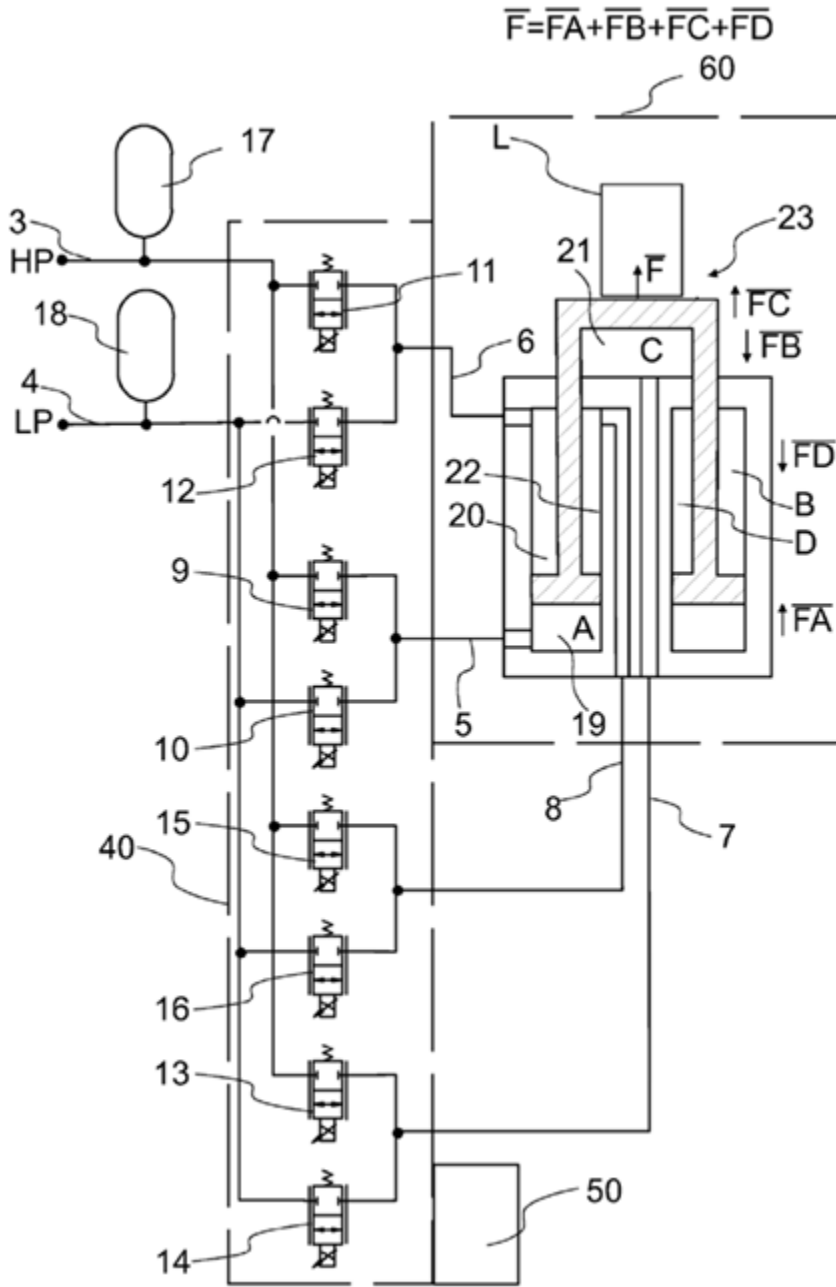
F15B11/036

Insert: The following new Definition statement.

Definition statement

This place covers:

Illustrative example of subject matter classified in this place:



References

Informative references

Replace: The existing Informative references table with the following updated table.

Fluid-actuated devices for displacing a member from one position to another; Gearing associated therewith	F15B15/00
---	-----------

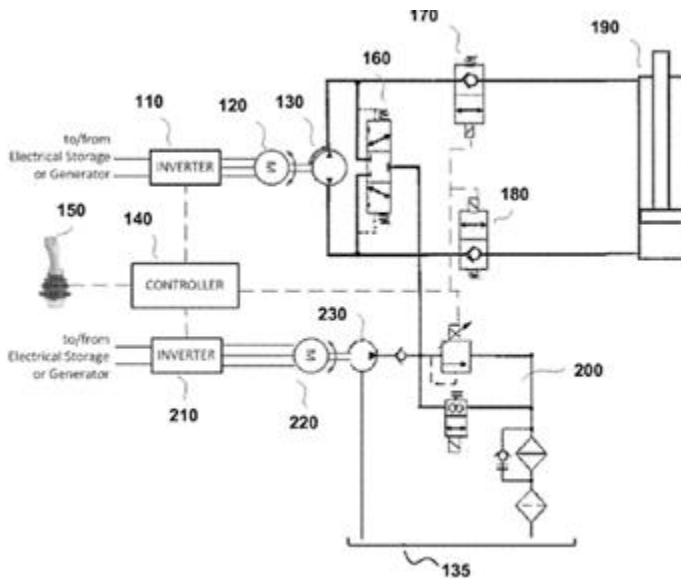
F15B11/0406

Insert: The following new Definition statement.

Definition statement

This place covers:

Illustrative example of subject matter classified in this place:



DATE: AUGUST 1, 2026

PROJECT MP12243

References

Insert: The following new Limiting references section.

Limiting references

This place does not cover:

Servomotor systems without provision for follow-up action for controlling the speed of an output member depending on the position of the working member with deceleration control	F15B11/048
---	------------

Informative references

Replace: The existing Informative references table with the following updated table.

Circuits for control of acceleration or deceleration of the output member in servomotor systems	F15B2211/755
Circuits for servomotor control during starting	F15B2211/851
Circuits for servomotor control during stopping	F15B2211/853

Delete: The entire Special rules section.

F15B11/042

Insert: The following new Definition statement.

Definition statement

This place covers:

Servomotor systems essentially incorporating special features for controlling the speed of an output member by means in the feed line, i.e. "meter in".

Illustrative example of subject matter classified in this place:

CPC NOTICE OF CHANGES 1932

DATE: AUGUST 1, 2026

PROJECT MP12243

Delete: The entire Special rules section.

F15B11/0423

Insert: The following new Definition statement.

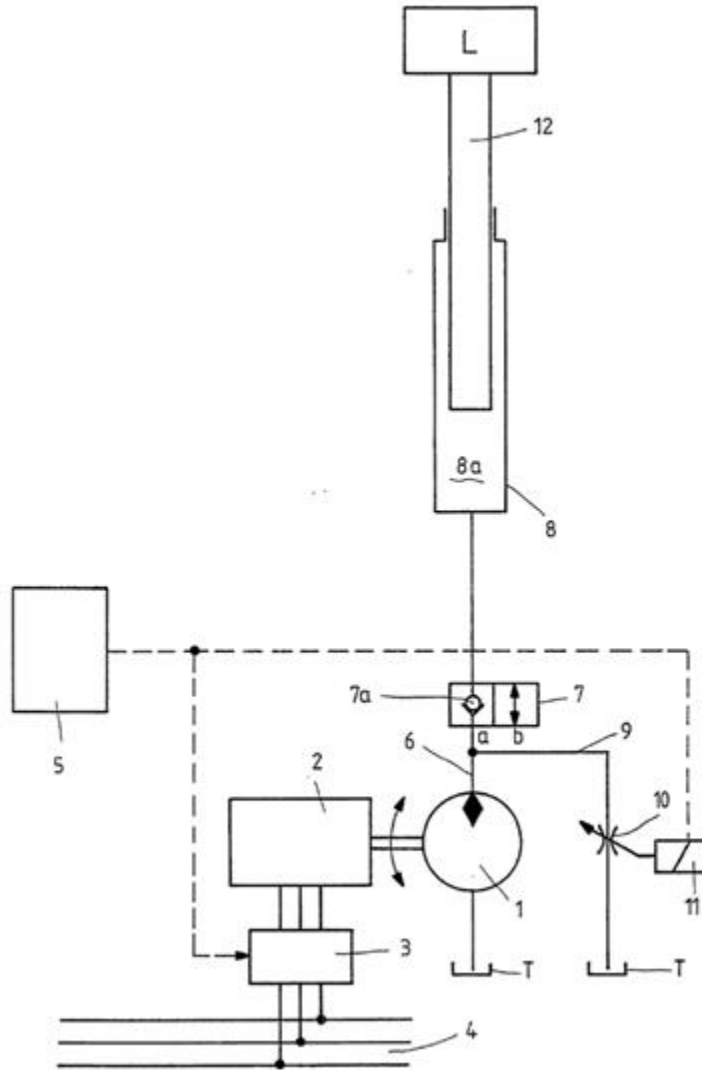
Definition statement

This place covers:

Illustrative example of subject matter classified in this place:

DATE: AUGUST 1, 2026

PROJECT MP12243



References

Informative references

Replace: The existing Informative references table with the following updated table.

<p>Servomotor systems without provision for follow-up action specially adapted to maintain constant speed of an output member by adjusting the pump output or bypass</p>	<p>F15B11/055</p>
--	-----------------------------------

F15B11/0426

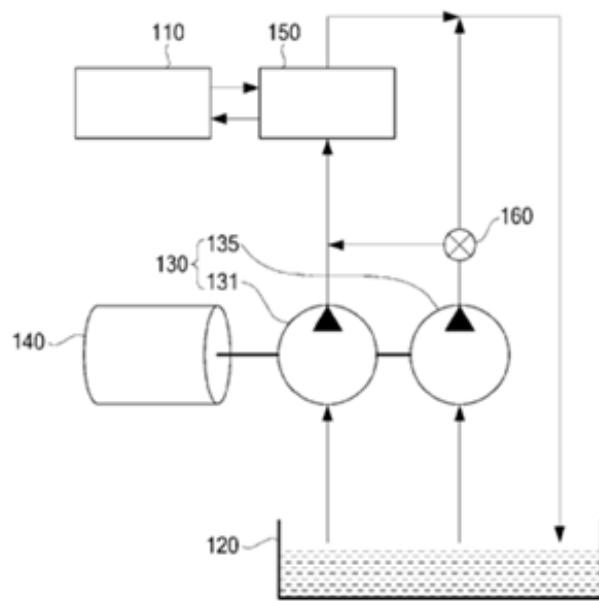
Definition statement

Replace: The existing Definition statement with the following updated text and images.

Systems controlling the speed by means of digital valves or by means of systems using pulse code modulation [PCM].

Illustrative examples of subject matter classified in this place:

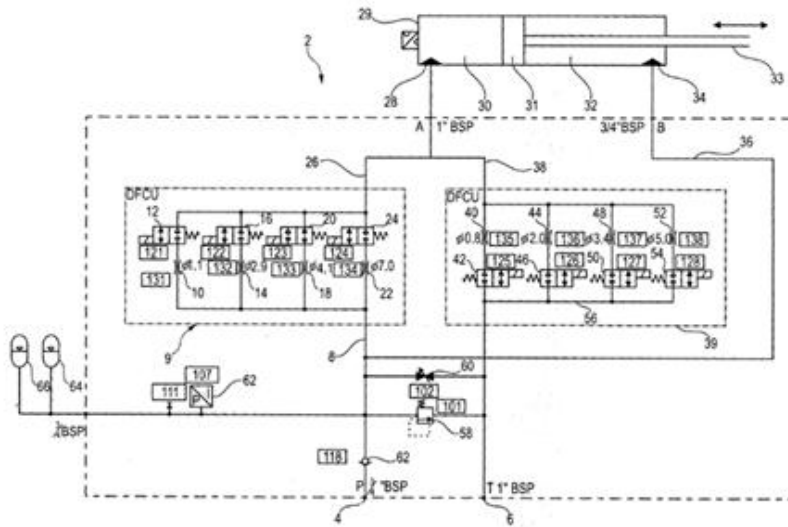
1.



2.

DATE: AUGUST 1, 2026

PROJECT MP12243



References

Informative references

Replace: The existing Informative references table with the following updated table.

Circuits for flow control in servomotor systems with multiple valves in parallel flow paths	F15B2211/40592
---	--------------------------------

F15B11/044

Insert: The following new Definition statement.

Definition statement

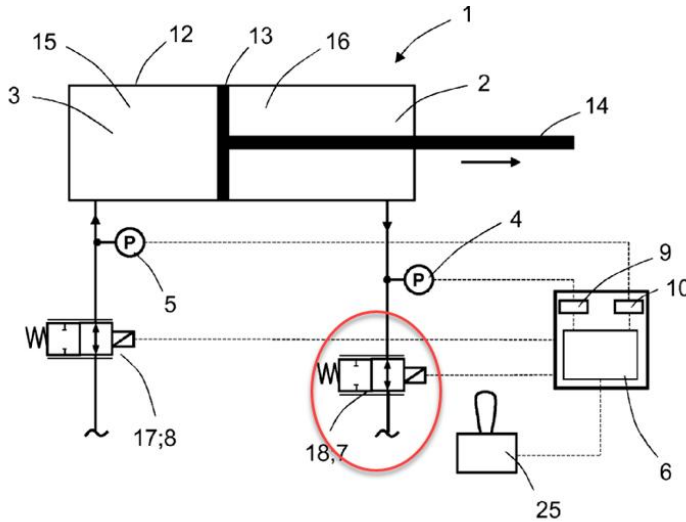
This place covers:

Servomotor systems essentially incorporating special features for controlling the speed of an output member by means in the return line, i.e. “meter out”.

Illustrative example of subject matter classified in this place:

DATE: AUGUST 1, 2026

PROJECT MP12243



References

Limiting references

Replace: The existing Limiting references table with the following updated table.

Servomotor systems without provision for follow-up action for controlling the speed of an output member, the speed depending on the position of the working member	F15B11/046
Servomotor systems without provision for follow-up action specially adapted to maintain constant speed force of an output member	F15B11/05

Informative references

Replace: The text in the existing Informative references table with the following updated text.

Circuits for servomotor systems with directional control combined with flow control by regulating means in return line, i.e. meter-out control	F15B2211/353
--	------------------------------

Delete: The entire Special rules section.

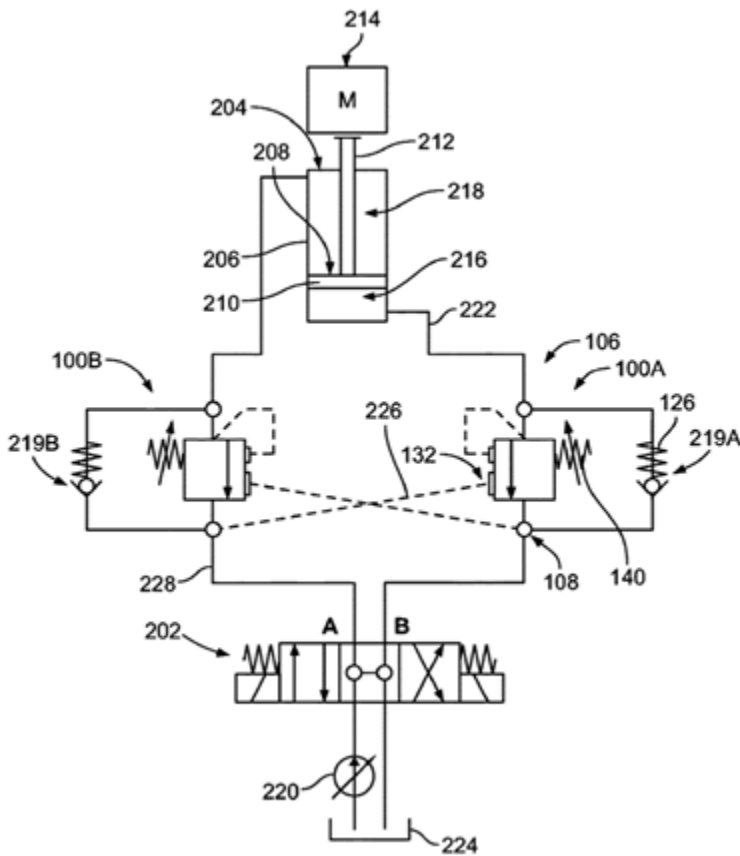
F15B11/0445

Insert: The following new Definition statement.

Definition statement

This place covers:

Illustrative example of subject matter classified in this place:



DATE: AUGUST 1, 2026

PROJECT MP12243

References

Informative references

Replace: The text in the existing Informative references table with the following updated text.

Counterbalance valves for servomotor systems	F15B13/029
Pressure control circuits for servomotor systems using counterbalance valves	F15B2211/50581

Delete: The entire Special rules section.

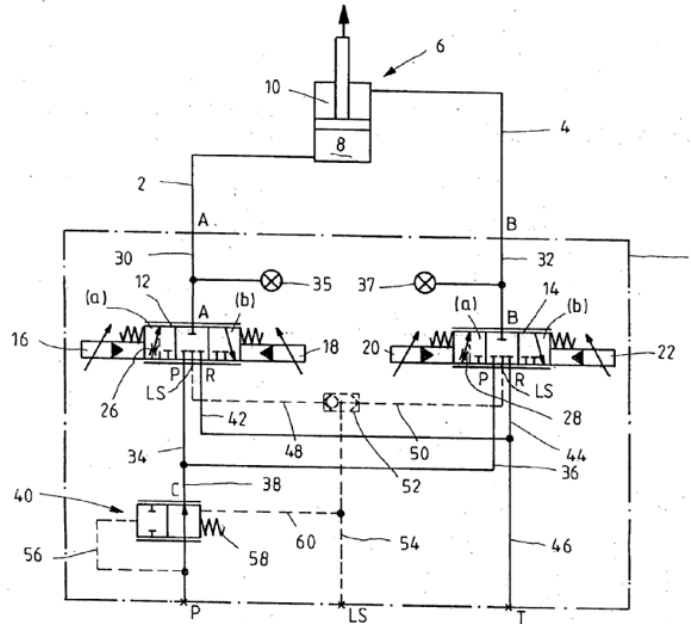
F15B11/05

Insert: The following new Definition statement.

Definition statement

This place covers:

Illustrative example of subject matter classified in this place:



References

Limiting references

Replace: The text in the existing Limiting references table with the following updated text.

Maintaining constant speed in servomotor systems without provision for follow-up action with sensing of servomotor demand or load, for two or more servomotors	F15B11/161
--	----------------------------

Informative references

Replace: The text in the existing Informative references tables with the following updated text.

Servomotor systems without provision for follow-up action for controlling the speed of an output member by means in the return line with counterbalance valves	F15B11/0445
--	-----------------------------

DATE: AUGUST 1, 2026

PROJECT MP12243

Fluid distribution or supply devices for use with a single servomotor with means or adapted for load sensing	F15B13/0416
Circuits for servomotor systems with directional control valves in combination with pressure compensating valves	F15B2211/3053
Flow control circuits for servomotor systems using pressure compensating valves	F15B2211/40553

Synonyms and Keywords

Replace: The existing table in Synonyms and Keywords with the following updated table.

In patent documents, the following abbreviations are often used:

LS	load sensing
LUDV	load-independent flow distribution (German: lastdruckunabhängige Durchflussverteilung)

Replace: The existing bullet points in the Synonyms and Keywords section with the following updated text.

In patent documents, the following words/expressions are often used as synonyms:

- "pressure-compensated", "pressure compensator", "pressure compensating valve" and "LUDV"

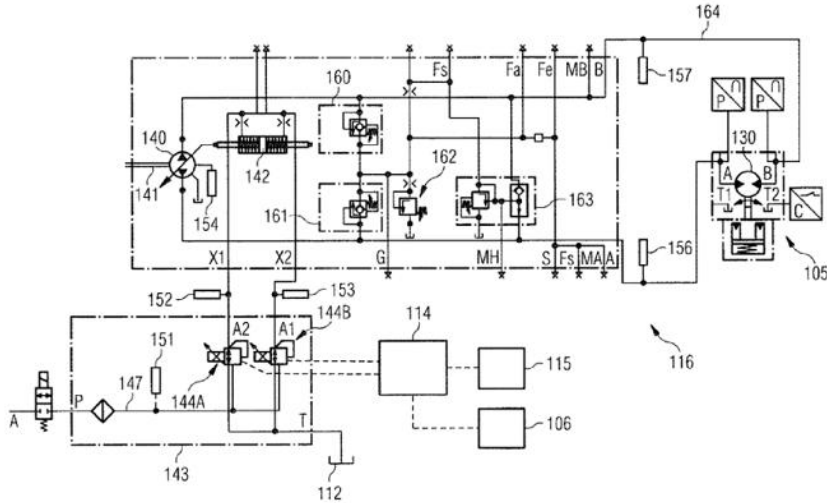
F15B11/055

Insert: The following new Definition statement.

Definition statement

This place covers:

Illustrative example of subject matter classified in this place:



References

Insert: The following new Limiting references section.

Limiting references

This place does not cover:

Servomotor systems without provision for follow-up action with two or more servomotors with sensing of servomotor demand or load for adjusting the pump output or bypass in response to demand	F15B11/165
--	----------------------------

Informative references

Replace: The existing Informative references table with the following updated table.

Circuits for pressure margin control in servomotor systems, e.g. pump pressure in relation to load pressure	F15B2211/253
Pump control	F04B49/00

DATE: AUGUST 1, 2026

PROJECT MP12243

Delete: The entire Special rules section.

F15B11/06

References

Informative references

Replace: The text in the existing Informative references table with the following updated text.

Circuits for control specific to compressible fluids in servomotor systems	F15B2211/8855
--	-------------------------------

F15B11/12

References

Informative references

Replace: The text in the existing Informative references table with the following updated text.

Servomotor systems without provision for follow-up action with two or more servomotors used in combination for obtaining stepwise operation of a single controlled member	F15B11/18
Restricting the stroke of fluid-actuated devices for displacing a member from one position to another	F15B15/24

F15B11/15

Insert: The following new Definition statement.

Definition statement

This place covers:

DATE: AUGUST 1, 2026

PROJECT MP12243

Synonyms and Keywords

Replace: The existing table in Synonyms and Keywords with the following updated table.

In patent documents, the following abbreviations are often used:

LS	load sensing
LUDV	load-independent flow distribution (German: lastdruckunabhängige Durchflussverteilung)

Replace: The existing bullet points in the Synonyms and Keywords section with the following updated text.

In patent documents, the following words/expressions are often used as synonyms:

- "pressure-compensated", "pressure compensator", "pressure compensating valve" and "LUDV"

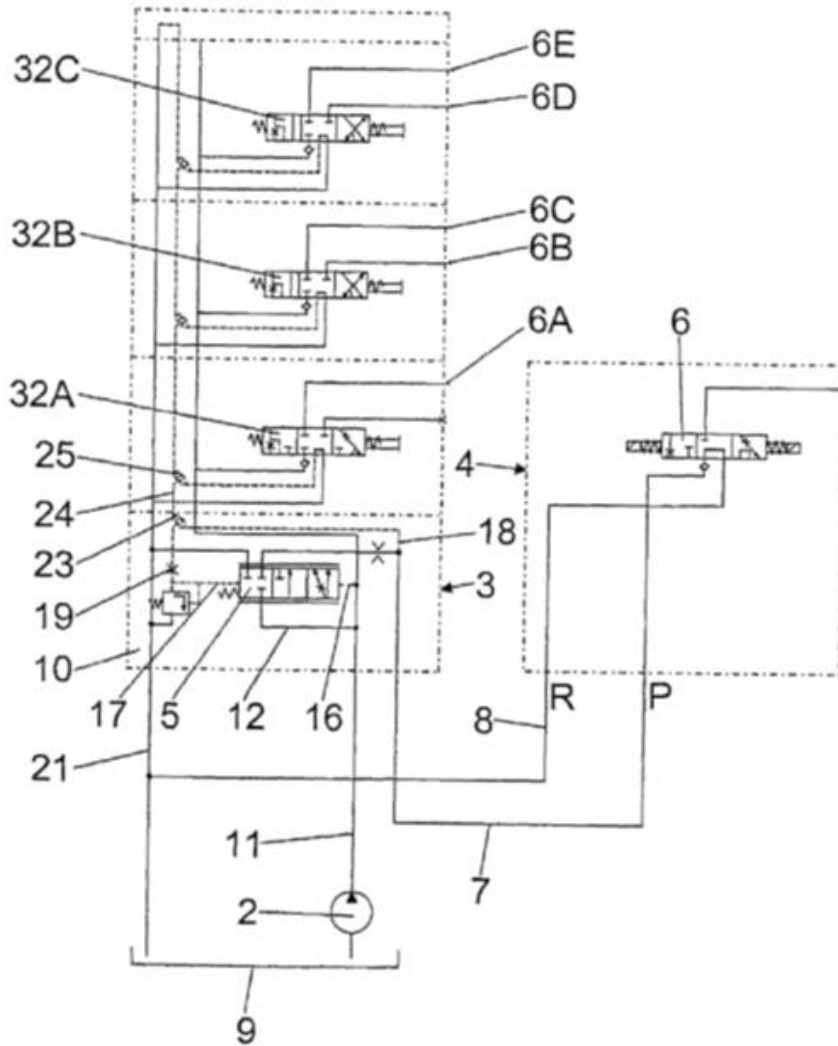
F15B11/162

Insert: The following new Definition statement.

Definition statement

This place covers:

Illustrative example of subject matter classified in this place:



References

Informative references

Replace: The text in the existing Informative references table with the following updated text.

Details of flow dividers or priority valves	F15B13/022
Flow control circuits for servomotor systems using flow dividers	F15B2211/40523

Circuits for servomotor systems for control of multiple output members, one or more output members having priority	F15B2211/781
Supply of pressurised fluid for power steering also supplying other consumers	B62D5/07

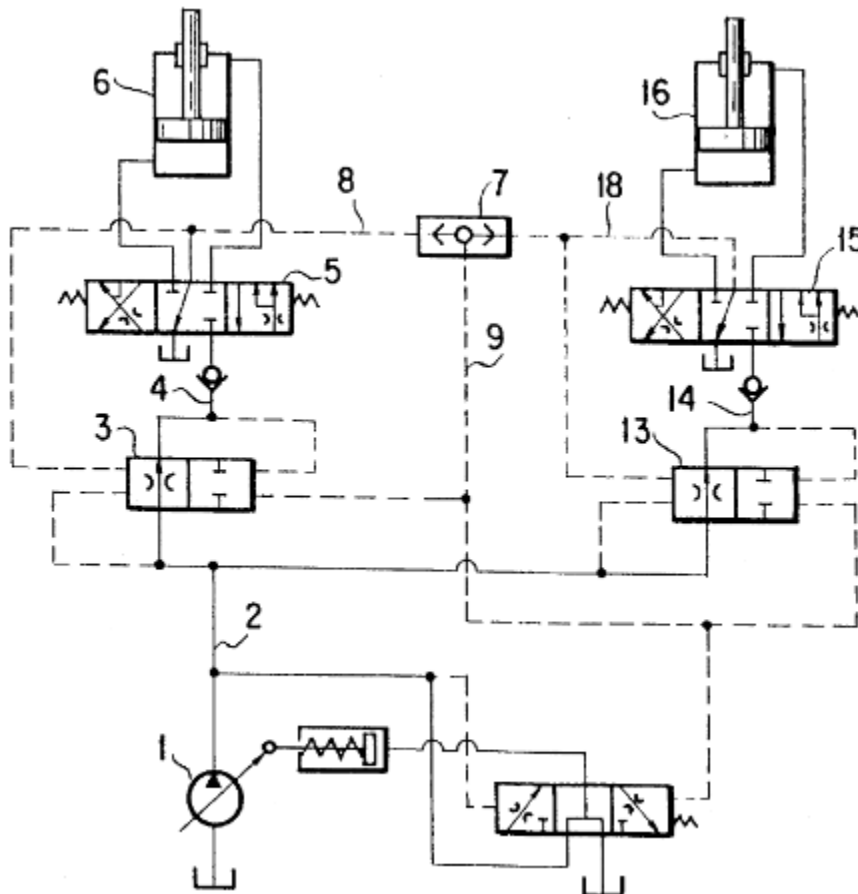
F15B11/163

Insert: The following new Definition statement.

Definition statement

This place covers:

Illustrative example of subject matter classified in this place:



DATE: AUGUST 1, 2026

PROJECT MP12243

References

Informative references

Replace: The text of the existing Informative references table with the following updated text.

Fluid distribution or supply devices for use with a single servomotor with means or adapted for load sensing	F15B13/0416
Circuits for servomotor systems with directional control valves in combination with pressure compensating valves	F15B2211/3053
Flow control circuits for servomotor systems using pressure compensating valves	F15B2211/40553

F15B11/165

Insert: The following new Definition statement.

Definition statement

This place covers:

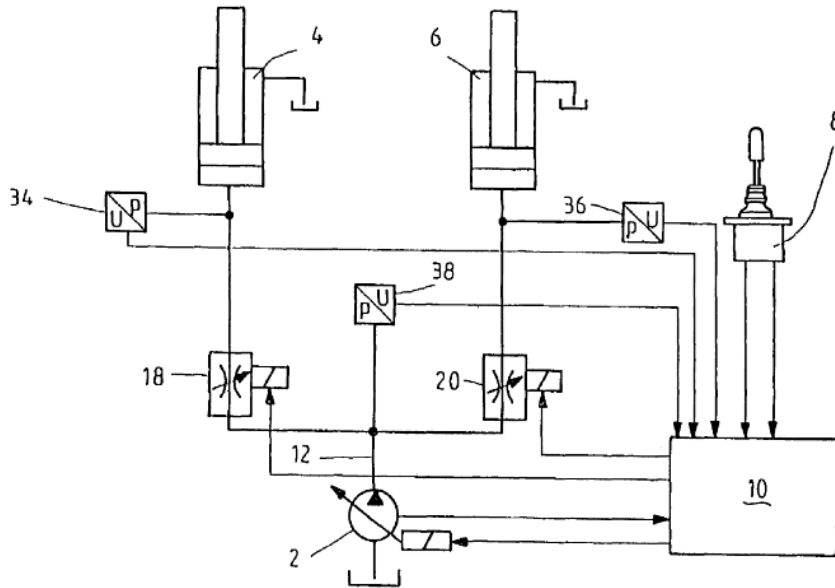
Illustrative examples of subject matter classified in this place:

- 1.

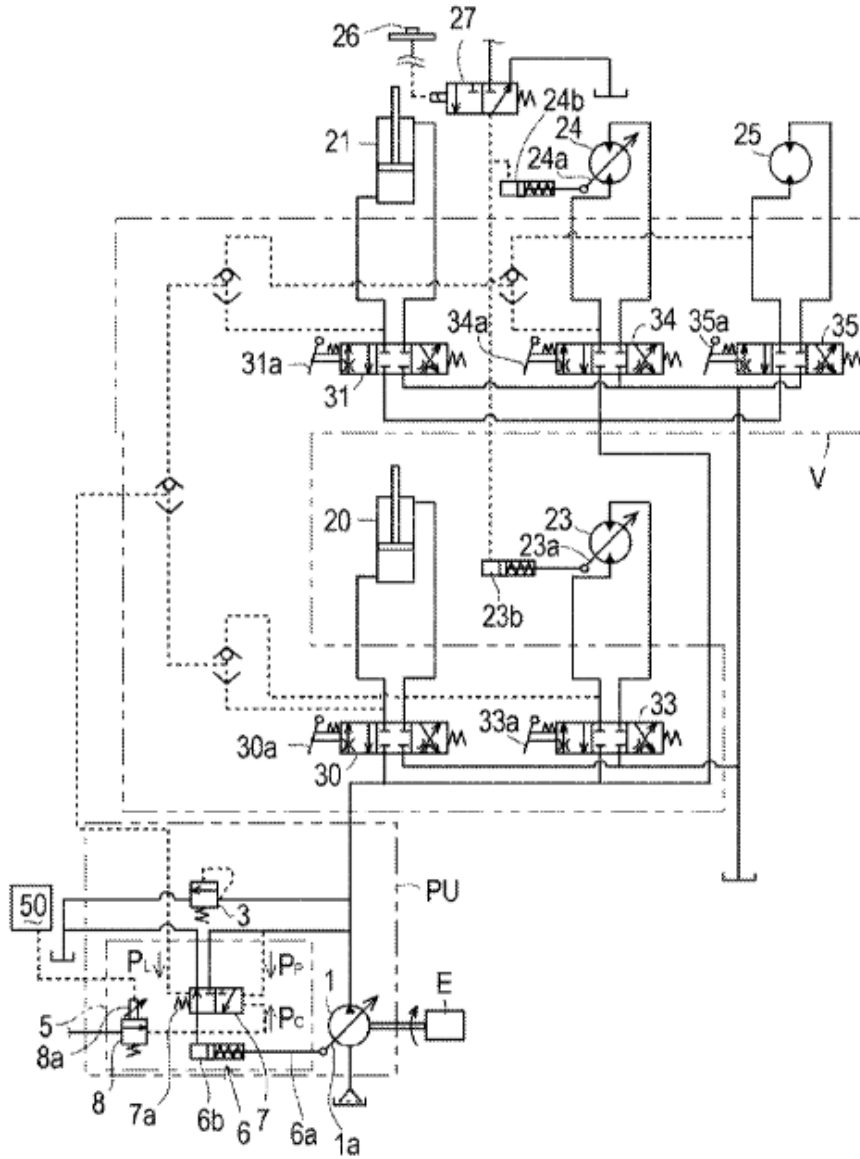
CPC NOTICE OF CHANGES 1932

DATE: AUGUST 1, 2026

PROJECT MP12243



2.



References

Informative references

Replace: The text in the existing Informative references table with the following updated text.

Servomotor systems without provision for follow-up action specially adapted to maintain constant speed of an output member by adjusting pump output or bypass	F15B11/055
Circuits for pressure margin control in servomotor systems, e.g. pump pressure in relation to load pressure	F15B2211/253
Pump control	F04B49/00

F15B11/168

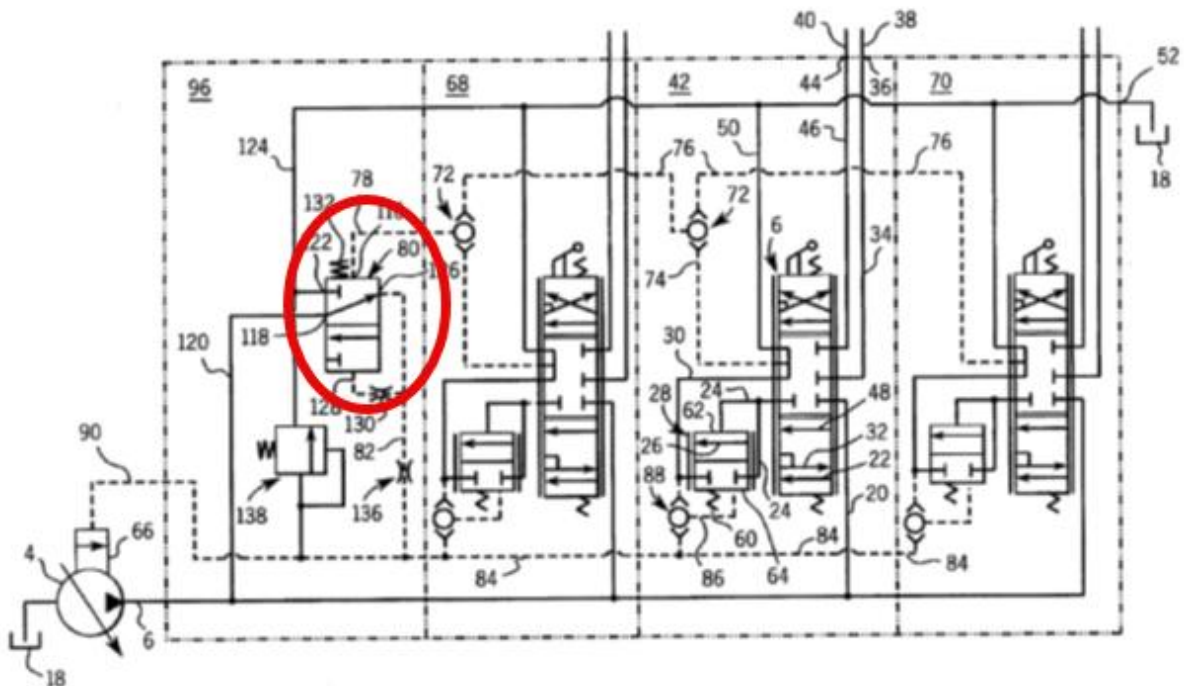
Insert: The following new Definition statement.

Definition statement

This place covers:

Sensing of servomotor demand or load with at least one load sense pressure being derived from a work port load pressure, but not being the work port load pressure itself, e.g. with an isolator valve or a duplicating valve.

Illustrative example of subject matter classified in this place:



DATE: AUGUST 1, 2026

PROJECT MP12243

The Figure illustrates an isolator valve (80) providing a load sensing signal into line (82).

References

Informative references

Replace: The text in the existing Informative references table with the following updated text.

Load-sensing circuits for servomotor systems with isolator valves	F15B2211/6058
---	-------------------------------

Delete: The entire Special rules section.

F15B11/17

Insert: The following new Definition statement.

Definition statement

This place covers:

Using two or more main pumps to pressurise the fluid circuit.

Illustrative example of subject matter classified in this place:

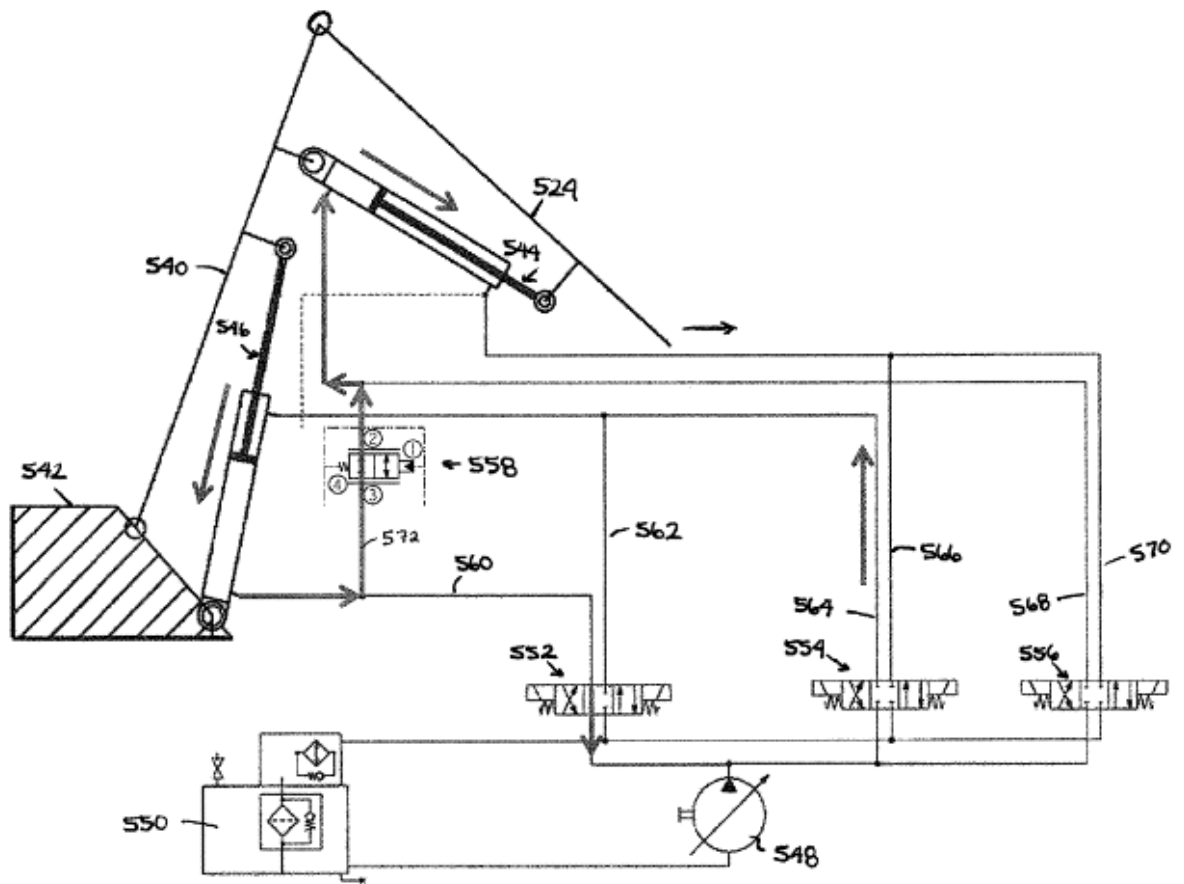
F15B11/20

Insert: The following new Definition statement.

Definition statement

This place covers:

Illustrative example of subject matter classified in this place:



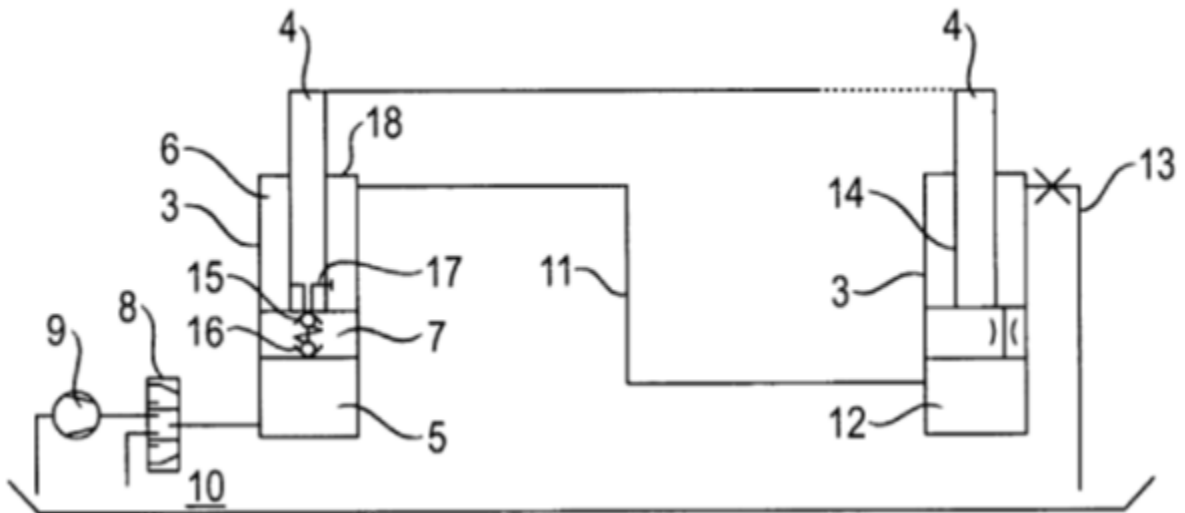
F15B11/205

Insert: The following new Definition statement.

Definition statement

This place covers:

Illustrative example of subject matter classified in this place:



References

Informative references

Replace: The existing Informative references table with the following updated table.

Telescopic jibs for cranes	B66C23/701
----------------------------	----------------------------

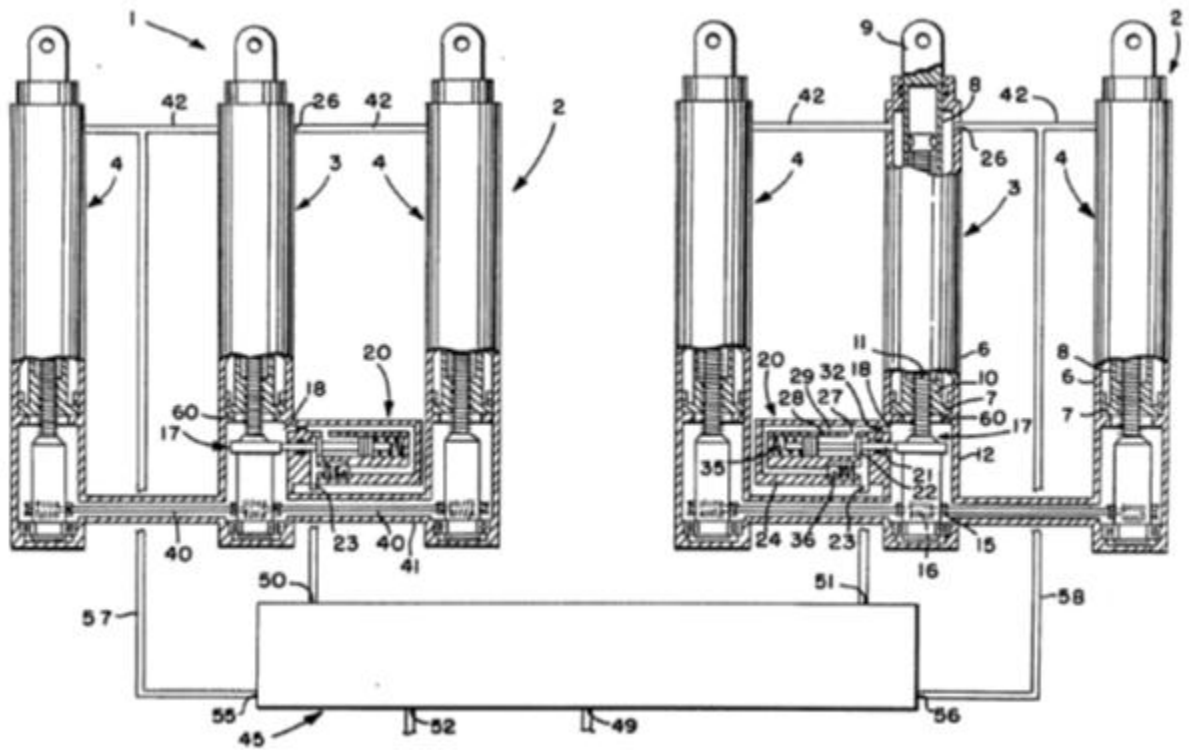
F15B11/22

Insert: The following new Definition statement.

Definition statement

This place covers:

Illustrative example of subject matter classified in this place:



References

Informative references

Replace: The text in the existing Informative references table with the following updated text.

Circuits for servomotor systems for concurrent control of multiple output members, e.g. synchronisation of two or more actuators	F15B2211/782
--	------------------------------

CPC NOTICE OF CHANGES 1932

DATE: AUGUST 1, 2026

PROJECT MP12243

Controlling the movement of a plurality of actuating members to maintain parallel movement of the platen or press in fluid-driven presses	B30B15/24
---	---------------------------