

EUROPEAN PATENT OFFICE
U.S. PATENT AND TRADEMARK OFFICE

CPC NOTICE OF CHANGES 1879

DATE: MAY 1, 2026

PROJECT RP10480

The following classification changes will be effected by this Notice of Changes:

<u>Action</u>	<u>Subclass</u>	<u>Group(s)</u>
SCHEME:		
Symbols Deleted:	A41G	3/0066
Symbols New:	A41G	3/0077, 3/0095
	A41G	5/0095, 5/026, 5/027
Titles Changed:	A41G	3/0075, 3/0083, 3/0091
	A41G	5/004, 5/0086, 5/0093
Warnings New	A41G	3/00, 3/0095
	A41G	5/00, 5/0095, 5/02, 5/026, 5/027
Definitions Deleted: (no frozen (F) symbol definitions should be deleted)	A41G	3/0066
Definitions New:	A41G	3/0077
	A41G	5/026, 5/027
Definitions Modified:	A41G	1/007, 1/009, 1/04
	A41G	3/00, 3/005, 3/0058, 3/0083, 3/0091
	A41G	5/00, 5/0006, 5/004, 5/0046, 5/0086, 5/0093
	A41G	7/00

The following subclasses/groups are also impacted by this Notice of Changes (indicate subclasses/groups outside of the project scope, such as those listed in the CRL): A42B 1/004, D01D, D01F.

This Notice of Changes includes the following [Check the ones included]:

1. CLASSIFICATION SCHEME CHANGES

- A. New, Modified or Deleted Group(s)
- B. New, Modified or Deleted Warning(s)
- C. New, Modified or Deleted Note(s)
- D. New, Modified or Deleted Guidance Heading(s)

2. DEFINITIONS

- A. New or Modified Definitions (Full definition template)
- B. Modified or Deleted Definitions (Definitions Quick Fix)

3. REVISION CONCORDANCE LIST (RCL)

4. CHANGES TO THE CPC-TO-IPC CONCORDANCE LIST (CICL)

5. CHANGES TO THE CROSS-REFERENCE LIST (CRL)

CPC NOTICE OF CHANGES 1879

DATE: MAY 1, 2026

PROJECT RP10480

1. CLASSIFICATION SCHEME CHANGES

A. New, Modified or Deleted Group(s)

<u>Type*</u>	<u>Symbol</u>	<u>Indent Level</u>	<u>Title</u> “CPC only” text should normally be enclosed in {curly brackets}**	<u>Transferred to#</u>
C	A41G3/00	0	Wigs (for dolls only A63H 3/44)	A41G3/00, A41G3/0095
D	A41G3/0066	1	{Planting hair on bases for wigs}	<Administrative transfer to A41G3/0077>
M	A41G3/0075	1	{Processes or apparatus for making wigs}	
N	A41G3/0077	2	{for fixing hair filaments on wig bases}	
M	A41G3/0083	1	{Wigs characterised by their hair filaments}	
M	A41G3/0091	1	{Sweat absorbing means or deodorants for wigs}	
N	A41G3/0095	1	{Methods for attaching wigs to user’s head}	
C	A41G5/00	0	Hair pieces, inserts, rolls, pads, or the like; Toupées	A41G5/00, A41G5/0095
M	A41G5/004	1	{Hairpieces, e.g. hair extensions}	
M	A41G5/0086	2	{Applicators or tools for applying hairpieces to the user}	
M	A41G5/0093	1	{connected to head accessories or to hair accessories, e.g. connected to scarves}	
N	A41G5/0095	1	{Methods for attaching toupées, hairpieces or hair extensions to the user}	
C	A41G5/02	1	Artificial eyelashes; Artificial eyebrows	A41G5/02, A41G5/026, A41G5/027
N	A41G5/026	2	{Applicators or tools for attaching artificial eyelashes or eyebrows to user’s head}	
N	A41G5/027	2	{Methods for attaching artificial eyelashes or eyebrows to user’s head}	

*N = new entries where reclassification into entries is involved; C = entries with modified file scope where reclassification of documents from the entries is involved; Q = new entries which are firstly populated with documents via administrative transfers from deleted (D) entries. Afterwards, the transferred documents into the Q entry will either stay or be moved to more appropriate entries, as determined by intellectual reclassification; T = existing entries with enlarged file scope, which receive documents from C or D entries, e.g. when a limiting reference is removed from the entry title; M = entries with no change to the file scope (no reclassification); D = deleted entries; F = frozen entries will be deleted once reclassification of documents from the entries is completed; U = entries that are unchanged.

NOTES:

- **No {curly brackets} are used for titles in CPC only subclasses, e.g. C12Y, A23Y; 2000 series symbol titles of groups found at the end of schemes (orthogonal codes); or the Y section titles. The {curly brackets} are used for 2000 series symbol titles found interspersed throughout the main trunk schemes (breakdown codes).
- U groups: it is obligatory to display the required “anchor” symbol (U group), i.e. the entry immediately preceding a new group or an array of new groups to be created (in case new groups are not clearly subgroups of C-type groups). Always include the symbol, indent level and title of the U group in the table above.
- All entry types should be included in the scheme changes table above for better understanding of the overall scheme change picture. Symbol, indent level, and title are required for all types.

CPC NOTICE OF CHANGES 1879

DATE: MAY 1, 2026

PROJECT RP10480

- “Transferred to” column must be completed for all C, D, F, and Q type entries. F groups will be deleted once reclassification is completed.
- When multiple symbols are included in the “Transferred to” column, avoid using ranges of symbols in order to be as precise as possible.
- For administrative transfer of documents, the following text should be used: “<administrative transfer to XX>”, “<administrative transfer to XX and YY simultaneously>”, or “<administrative transfer to XX, YY, ...and ZZ simultaneously>” when administrative transfer of the same documents is to more than one place.
- Administrative transfer to main trunk groups is assumed to be the source allocation type, unless otherwise indicated.
- Administrative transfer to 2000/Y series groups is assumed to be “additional information”.
- If needed, instructions for allocation type should be indicated within the angle brackets using the abbreviations “ADD” or “INV”: <administrative transfer to XX ADD> , <administrative transfer to XX INV>, or <administrative transfer to XX ADD, YY INV, ... and ZZ ADD simultaneously>.
- In certain situations, the “D” entries of 2000-series or Y-series groups may not require a destination (“Transferred to”) symbol, however it is required to specify “<no transfer>” in the “Transferred to” column for such cases.
- For finalization projects, the deleted “F” symbols should have <no transfer> in the “Transferred to” column.
- For more details about the types of scheme change, see CPC Guide.

CPC NOTICE OF CHANGES 1879

DATE: MAY 1, 2026

PROJECT RP10480

B. New, Modified or Deleted Warning notice(s)

SUBCLASS A41G - ARTIFICIAL FLOWERS;WIGS;MASKS;FEATHERS

Type	Location	Old warning	New warning
N	A41G3/00		Group A41G3/00 is impacted by reclassification into group A41G3/0095. Groups A41G3/00 and A41G3/0095 should be considered in order to perform a complete search.
N	A41G3/0095		Group A41G3/0095 is incomplete pending reclassification of documents from group A41G3/00. Groups A41G3/00 and A41G3/0095 should be considered in order to perform a complete search.
N	A41G5/00		Group A41G5/00 is impacted by reclassification into group A41G5/0095. Groups A41G5/00 and A41G5/0095 should be considered in order to perform a complete search.
N	A41G5/0095		Group A41G5/0095 is incomplete pending reclassification of documents from group A41G5/00. Groups A41G5/00 and A41G5/0095 should be considered in order to perform a complete search.
N	A41G5/02		Group A41G5/02 is impacted by reclassification into groups A41G5/026 and A41G5/027. Groups A41G5/02, A41G5/026 and A41G5/027 should be considered in order to perform a complete search.
N	A41G5/026		Group A41G5/026 is incomplete pending reclassification of documents from group A41G5/02. Groups A41G5/02 and A41G5/026 should be considered in order to perform a complete search.
N	A41G5/027		Group A41G5/027 is incomplete pending reclassification of documents from group A41G5/02. Groups A41G5/02 and A41G5/027 should be considered in order to perform a complete search.

*N = new warning, M = modified warning, D = deleted warning

NOTE: The "Location" column only requires the symbol PRIOR to the location of the warning. No further directions such as "before" or "after" are required.

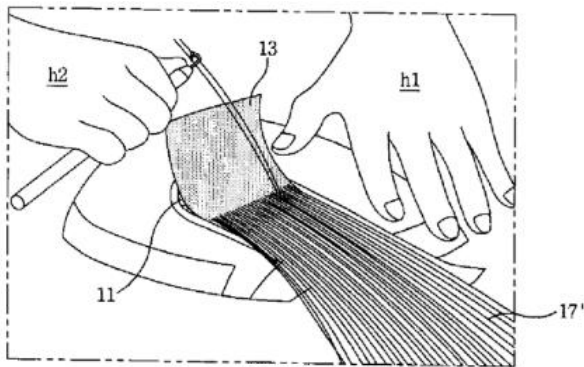
2. A. DEFINITIONS (New)

A41G3/0077

Definition statement

This place covers:

Illustrative example of subject matter classified in this place:



The Figure illustrates a hand-braiding method for hair with skin net and wig produced thereby.

A41G5/026

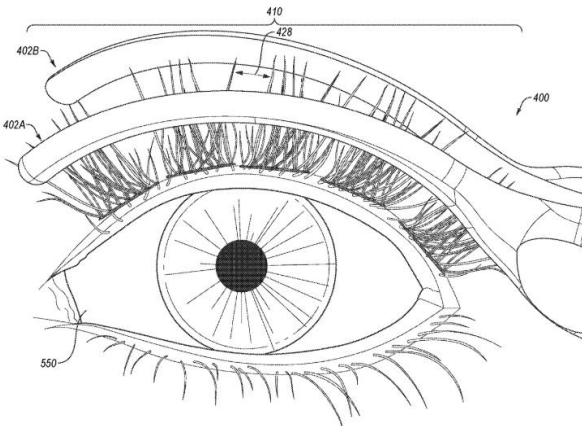
Definition statement

This place covers:

Illustrative example of subject matter classified in this place:

DATE: MAY 1, 2026

PROJECT RP10480



The Figure illustrates an electric applicator (400) used to affix the artificial lash extensions to the natural lashes.

A41G5/027

Special rules of classification

If the process for applying the artificial eyelashes or eyebrows is defined by use of a specific, inventive applicator or tool, classification should be made in group [A41G5/026](#) and not group [A41G5/027](#).

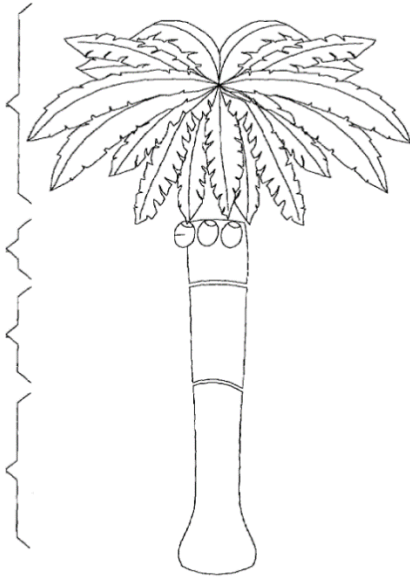
2. A. DEFINITIONS (Modified)

A41G1/007

Definition statement

Replace: The existing Definition statement with the following updated text and images.

Illustrative example of subject matter classified in this place:



Delete: The entire Limiting references section.

Delete: The entire Special rules section.

A41G1/009

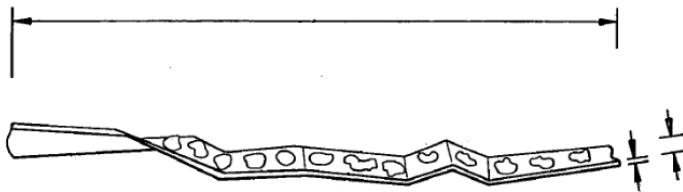
Definition statement

Replace: The existing Definition statement with the following updated text and images.

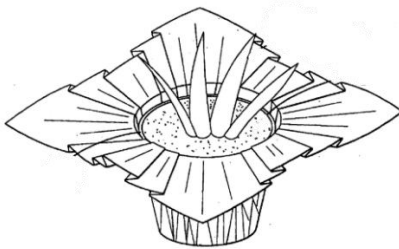
Artificial grass blade shapes and sheet materials imitating grass, often used for decorating plants or flowerpots.

Illustrative examples of subject matter classified in this place:

1.



2.



References

Delete: The entire Limiting references section.

Insert: The following new Informative references section.

Informative references

DATE: MAY 1, 2026

PROJECT RP10480

Attention is drawn to the following places, which may be of interest for search:

Formation of filaments by cutting or fibrillating films	D01D5/42
Flexible sheet glued on macromolecular material, characterised by their backing, e.g. secondary backing, back-sizing	D06N7/0036
Models for demonstration purposes of scenic effects, e.g. trees or rocks	G09B25/08

Special rules of classification

Replace: The existing Special rules text with the following updated text.

This group does not cover layered constructions with under surface simulating grass fields. Artificial turf with such layered constructions, often including drainage systems, is classified in [E01C13/08](#).

Glossary of terms

Replace: The existing Glossary of terms table with the following updated table.

turf	a sod of grass, with the roots and earth adhering
------	---

[A41G1/04](#)

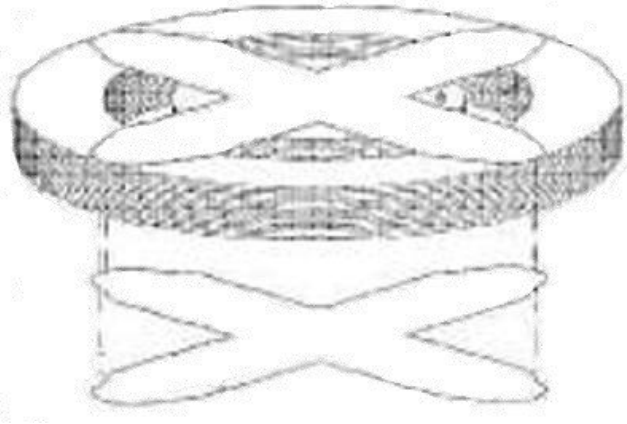
Definition statement

Replace: The existing Definition statement with the following updated text and image.

Illustrative example of subject matter classified in this place:

DATE: MAY 1, 2026

PROJECT RP10480



The Figure illustrates a multicolour garland fabricating method for use in decoration field, involves taking garland in stack of sheet, taking another garland to ream another stack of sheet and integrating ends of stacks to combine two garlands together.

References

Informative references

Replace: The symbol in the following row of the Informative references table with the updated symbol.

Floral handling	A01G5/00
-----------------	--------------------------

Glossary of terms

Replace: The existing Glossary of terms table with the following updated table.

garland	a wreath made of flowers, leaves, worn on the head like a crown or hung about an object for decoration
---------	--

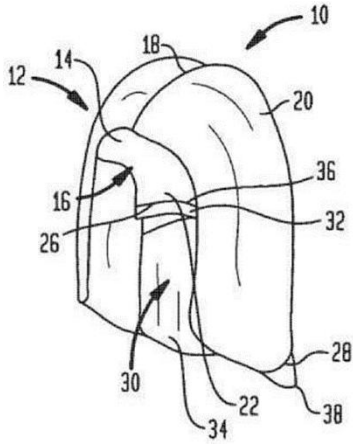
A41G3/00

Definition statement

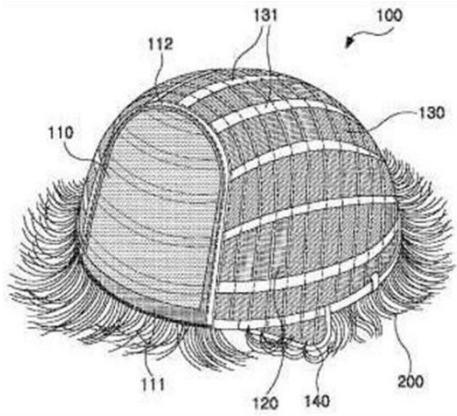
Replace: The existing Definition statement with the following updated text. The images should remain as-is.

Illustrative examples of subject matter classified in this place:

1. Adjustable wig



2. Wig comprising cap with nano-silver

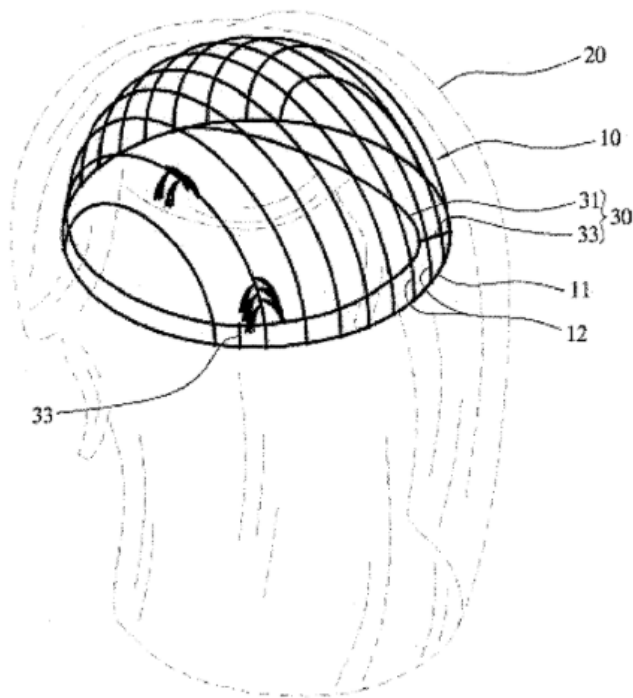


A41G3/005

Definition statement

Replace: The existing Definition statement with the following updated text and image.

Illustrative example of subject matter classified in this place:



DATE: MAY 1, 2026

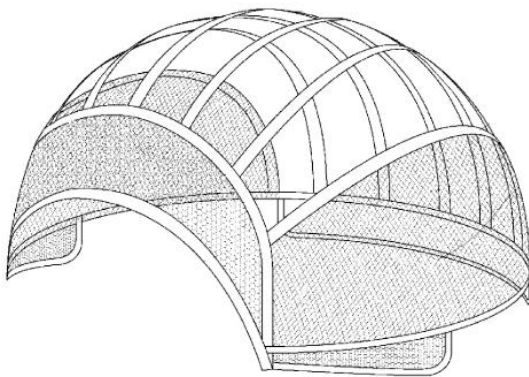
PROJECT RP10480

A41G3/0058

Definition statement

Replace: The existing Definition statement with the following updated text and image.

Illustrative example of subject matter classified in this place:



A41G3/0083

Insert: The following new Definition statement.

Definition statement

This place covers:

Hair filaments specially adapted for wigs.

Illustrative examples of subject matter classified in this place:

1. A hairpiece

DATE: MAY 1, 2026

PROJECT RP10480

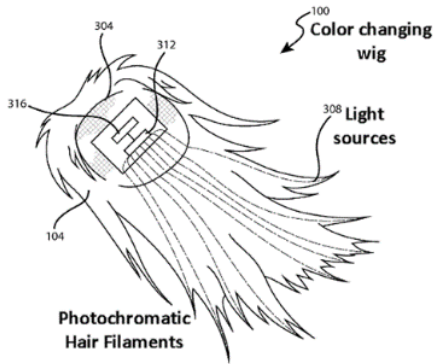


Figure 1 illustrates a perspective view of an underside of a hairpiece. The individual strands of the hairpiece (100) may be interwoven in a cap portion (304) adapted to fit on the head or other body section of the wearer.

2.

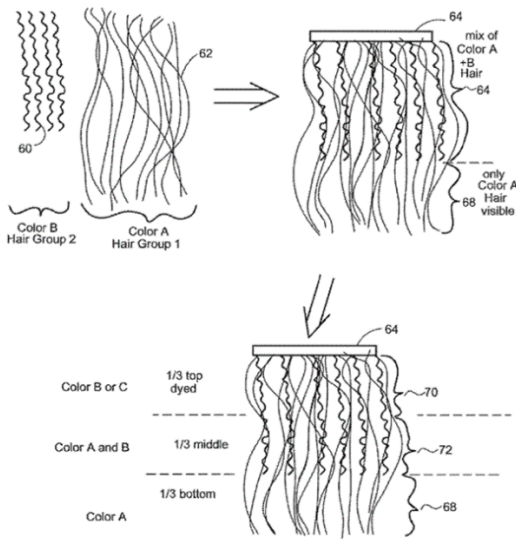


Figure 2 illustrates a process showing the starting hair groups 1 and 2, the combination or joiner of hair groups 1 and 2, and the final colour processing step.

DATE: MAY 1, 2026

PROJECT RP10480

Insert: The following new Relationships section.

Relationships with other classification places

Material aspects of hair filaments, such as chemical compositions, construction or shape or treatments applied thereto, are classified in the respective material scheme(s) (e.g. [D01F](#), [D01D](#), [D06M](#)) and may be designated under group [D10B2503/08](#) to indicate their intended use in wigs.

References

Delete: The entire Limiting references section.

Insert: The following new Informative references section.

Informative references

Attention is drawn to the following places, which may be of interest for search:

Chemical treatment of natural filaments or fibres	D01C
Mechanical methods in the manufacture of artificial filaments or fibres	D01D
Chemical features in the manufacture of artificial filaments	D01F
Preliminary treatment of fibres	D01G
Crimping or curling filaments or fibres	D02G
Finishing or dressing of filaments or fibres	D02J
Washing, bleaching or dry-cleaning filaments or fibres	D06L
Treatment of fibres not otherwise provided for in D06	D06M
Materials or physical properties of filaments or fibres	D10B
Textiles for wigs	D10B2503/08

[A41G3/0091](#)

References

Delete: The entire Limiting references section.

DATE: MAY 1, 2026

PROJECT RP10480

Insert: The following new Informative references section.

Informative references

Attention is drawn to the following places, which may be of interest for search:

Deodorisation of air	A61L9/00
Body deodorants	A61Q15/00

[A41G5/00](#)

References

Informative references

Replace: The existing Informative references table with the following updated table.

Hair fillers, e.g. wire gratings	A45D8/38
----------------------------------	--------------------------

Special rules of classification

Replace: The existing Special rules text with the following updated text.

Wigs covering complete hair area of head are classified in group [A41G3/00](#) and lower groups.

Hairpieces covering part of hair area of head (i.e. bald area) are classified in [A41G5/00](#) and lower groups.

Hairpieces covering partial bald area are classified in group [A41G5/0006](#) and lower groups.

Glossary of terms

Replace: The existing Glossary of terms table with the following updated table.

toupée	a patch of false hair or small wig to cover a bald spot
--------	---

A41G5/0006

Definition statement

Replace: The existing Definition statement with the following updated text and images.

Illustrative examples of subject matter classified in this place:

1.

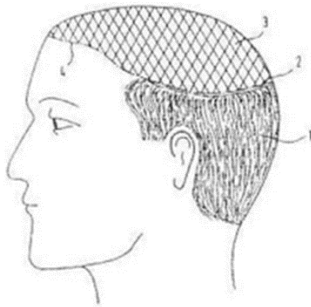
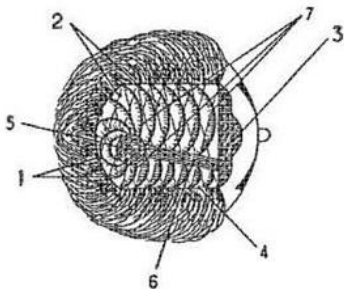


Figure 1 illustrates a toupée wearing acclimation in three suggested stages.

2.



DATE: MAY 1, 2026

PROJECT RP10480

Figure 2 illustrates a hairpiece with small leather washers (1) which are fixed to the hair and to the scalp by double sided adhesive tape. A network of threads (2) is stitched to these and three nets (3,5,6), of different sizes, are fixed to the threads and form the front, centre and parting. Made-to-measure hairpiece fixed to hair by using small washers (1) to cover baldness.

Special rules of classification

Replace: The existing Special rules text with the following updated text.

Wigs covering complete hair area of head are classified in group [A41G3/00](#) and lower groups.

Hairpieces covering part of hair area of head (i.e. bald area) are classified in group [A41G5/00](#) and lower groups.

Hairpieces covering partial bald area are classified in group [A41G5/0006](#) and lower groups.

Glossary of terms

Replace: The existing Glossary of terms table with the following updated table.

toupée	a patch of false hair or small wig to cover a bald spot
--------	---

[A41G5/004](#)

Definition statement

Replace: The existing Definition statement with the following updated text and images.

Illustrative examples of subject matter classified in this place:

- 1.

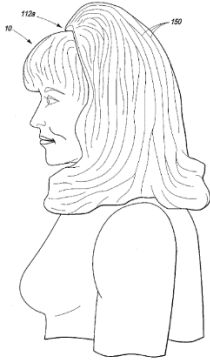


Figure 1 illustrates hair addition for providing bump effect.

2.

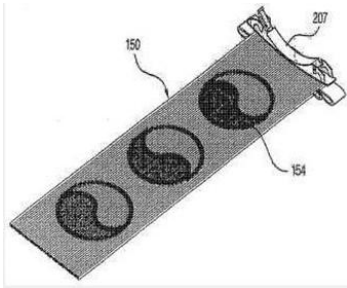


Figure 2 illustrates decorated hairpieces and method for decorating hairpieces.

Delete: The entire Informative references section.

Special rules of classification

Replace: The existing Special rules text with the following updated text.

Wigs covering complete hair area of head are classified in [A41G3/00](#) and lower groups.

Hairpieces covering part of hair area of head (i.e. bald area) are classified in group [A41G5/00](#) and lower groups.

Hairpieces covering partial bald area are classified in group [A41G5/0006](#) and lower groups.

DATE: MAY 1, 2026

PROJECT RP10480

Forming hair extensions from bundles of hair are classified in group [A41G5/0046](#) and lower groups.

Hairpieces held by head covering or headband are classified in group [A41G5/0093](#).

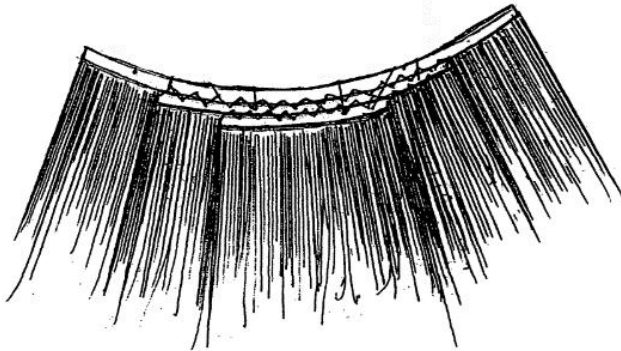
Hair extensions alone are classified in group [A41G5/004](#), but when hair extension is characterised by the fastening technique, classify only in group [A41G5/0053](#) and lower groups and not in group [A41G5/004](#).

A41G5/0046

Definition statement

Replace: The existing Definition statement with the following updated text and image.

Illustrative example of subject matter classified in this place:



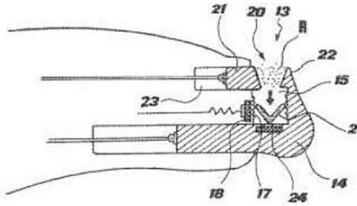
A41G5/0086

Definition statement

Replace: The existing Definition statement with the following updated text and image.

Applicators or tools for applying or removing hair extensions.

Illustrative example of subject matter classified in this place:



The Figure illustrates a hair extension with method of application thereof and device for applying hair extensions.

References

Delete: The entire Limiting references section.

Insert: The following new Informative references section.

Informative references

Attention is drawn to the following places, which may be of interest for search:

Joining of preformed plastic parts, by heating	B29C65/18
Joining of preformed plastic parts, by internal stresses, i.e. shrinking	B29C65/68

Delete: The entire Special rules section.

A41G5/0093

Definition statement

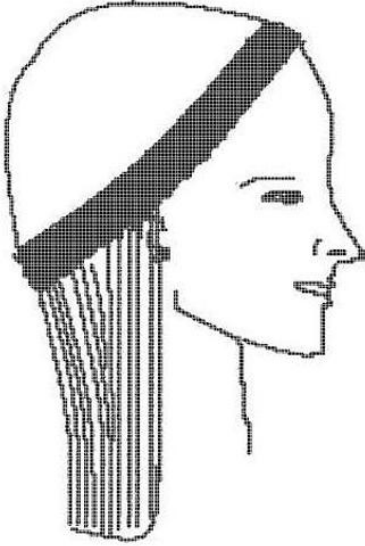
Replace: The existing Definition statement with the following updated text and image.

Hairpieces held by head covering or headband.

DATE: MAY 1, 2026

PROJECT RP10480

Illustrative example of subject matter classified in this place:



Delete: The entire Special rules section.

A41G7/00

Definition statement

Replace: The existing Definition statement with the following updated text and image.

Illustrative example of subject matter classified in this place:

Decorative mask



DATE: MAY 1, 2026

PROJECT RP10480

Glossary of terms

Replace: The existing Glossary of terms table with the following updated table.

domino	a kind of loose cloak, apparel of Venetian origin, chiefly worn at masquerades, with a small mask covering the upper part of the face, by persons not personating a character, sometimes applied to the half-mask itself
--------	--

CPC NOTICE OF CHANGES 1879

DATE: MAY 1, 2026

PROJECT RP10480

2. B. DEFINITIONS QUICK FIX

Symbol	Location of change (e.g., section title)	Existing reference symbol or text	Action; New symbol; New text
A41G3/0066	A41G3/0066		<u>Delete</u> entire definition

Notes:

Use this Definitions Quick Fix (DQF) table to:

- Delete an entire definition
- Delete an entire section
- Change a reference symbol
- Delete a reference symbol
- Delete text in a References section
- Correct one error in spelling, article use, or verb tense

Otherwise, use the standard template.

Reminder: Never delete F symbol definitions.

CPC NOTICE OF CHANGES 1879

DATE: MAY 1, 2026

PROJECT RP10480

3. REVISION CONCORDANCE LIST (RCL)

Type*	From CPC Symbol (existing)	To CPC Symbol(s)
C	A41G 3/00	A41G 3/00, A41G 3/0095
D	A41G 3/0066	<Administrative transfer to A41G 3/0077>
C	A41G 5/00	A41G 5/00, A41G 5/0095
C	A41G 5/02	A41G 5/02, A41G 5/026, A41G 5/027

* C = entries with modified file scope where reclassification of documents from the entries is involved; Q = new entries which are firstly populated with documents via administrative transfers from deleted (D) entries. Afterwards, the transferred documents into the Q entry will either stay or be moved to more appropriate entries, as determined by intellectual reclassification; D = deleted entries; F = frozen entries will be deleted once reclassification of documents from the entries is completed.

NOTES:

- Only C, D, F, and Q type entries are included in the table above.
- When multiple symbols are included in the “To” column, do not use ranges of symbols.
- For administrative transfer of documents, the following text should be used: “<administrative transfer to XX>”, “<administrative transfer to XX and YY simultaneously>”, or “<administrative transfer to XX, YY, ...and ZZ simultaneously>” when administrative transfer of the same documents is to more than one place.
- Administrative transfer to main trunk groups is assumed to be the source allocation type, unless otherwise indicated.
- Administrative transfer to 2000/Y series groups is assumed to be “additional information”.
- If needed, instructions for allocation type should be indicated within the angle brackets using the abbreviations “ADD” or “INV”: <administrative transfer to XX ADD>, <administrative transfer to XX INV>, or <administrative transfer to XX ADD, YY INV, ... and ZZ ADD simultaneously>.
- In certain situations, the “D” entries of 2000-series or Y-series groups may not require a destination (“To”) symbol, however it is required to specify “<no transfer>” in the “To” column for such cases.
- RCL is not needed for finalisation projects.

CPC NOTICE OF CHANGES 1879

DATE: MAY 1, 2026

PROJECT RP10480

4. CHANGES TO THE CPC-TO-IPC CONCORDANCE LIST (CICL)

<u>CPC</u>	<u>IPC</u>	<u>Action*</u>
A41G 3/0066		DELETE
A41G 3/0077	A41G 3/00	NEW
A41G 3/0095	A41G 3/00	NEW
A41G 5/0095	A41G 5/00	NEW
A41G 5/026	A41G 5/02	NEW
A41G 5/027	A41G 5/02	NEW

*Action column:

- For an (N) or (Q) entry, provide an IPC symbol and complete the Action column with “NEW.”
- For an existing CPC main trunk entry or indexing entry where the existing IPC symbol needs to be changed, provide an updated IPC symbol and complete the Action column with “UPDATED.”
- For a (D) CPC entry or indexing entry complete the Action column with “DELETE.” IPC symbol does not need to be included in the IPC column.
- For an (N) 2000 series CPC entry which is positioned within the main trunk scheme (breakdown code) provide an IPC symbol and complete the action column with “NEW”.
- For an (N) 2000 series CPC entry positioned at the end of the CPC scheme (orthogonal code), with no IPC equivalent, complete the IPC column with “CPCONLY” and complete the action column with “NEW”.

NOTES:

- F symbols are not included in the CICL table above.
- T and M symbols are not included in the CICL table above unless a change to the existing IPC is desired.

CPC NOTICE OF CHANGES 1879

DATE: MAY 1, 2026

PROJECT RP10480

5. CROSS-REFERENCE LIST (CRL)

Definitions references impacted by this revision project

<u>Location of reference to be changed</u>	<u>Referenced subclass or group to be changed</u>	<u>Section of definition</u>	<u>Action; New reference symbol; New text</u>
A42B 1/004	A41G 5/0093	Informative references	Replace current reference text with the following: Hair pieces or toupées connected to head accessories or to hair accessories
D01D	A41G 3/0083	Informative references	Replace current reference text with the following: Wigs characterised by their hair filaments
D01F	A41G 3/0083	Informative references	Replace current reference text with the following: Wigs characterised by their hair filaments

NOTES:

- The CRL tables above are used for changes to locations **outside** of the project scope. Changes to references in scheme titles or definitions **inside** the project scope will be reflected in the “scheme change” template or one of the “definition” templates.
- In addition to other changes proposed in the tables above, in the column titled “Referenced subclass or group to be changed,” **referenced** D symbols should indicate an action of “delete” or should indicate a replacement symbol and **referenced** F symbols should indicate a replacement symbol.
- When a reference is deleted, text related to that reference will also be deleted unless other references or a range of references associated with the same text remain.