

## E04H

**BUILDINGS OR LIKE STRUCTURES FOR PARTICULAR PURPOSES; SWIMMING OR SPLASH BATHS OR POOLS; MASTS; FENCING; TENTS OR CANOPIES, IN GENERAL (foundations [E02D](#))**

### Definition statement

*This place covers:*

Structures specially adapted for buildings for special purposes; general layout of buildings as a whole, e.g. modular co-ordination; details which are peculiar to different types of the buildings for special purposes specified in the groups.

### References

#### Limiting references

*This place does not cover:*

Foundations	<a href="#">E02D</a>
-------------	----------------------

#### Informative references

*Attention is drawn to the following places, which may be of interest for search:*

Canopies having special application, which are covered by the relevant place, e.g. protecting chairs against the weather	<a href="#">A47C 7/66</a>
Bed canopies	<a href="#">A47C 29/00</a>
Sanitary equipment; Accessories therefor, e.g. toilet accessories	<a href="#">A47K</a>
Layered materials or layered products in general	<a href="#">B32B</a>
Bridges	<a href="#">E01D</a>
Additional construction work	<a href="#">E01F</a>
General building constructions	<a href="#">E04B</a>
Structural elements for building constructions	<a href="#">E04C</a>
Roofs	<a href="#">E04D</a>
Finishing work on buildings	<a href="#">E04F</a>
Scaffolding; Shuttering	<a href="#">E04G</a>

## E04H 1/00

**Buildings or groups of buildings for dwelling or office purposes; General layout, e.g. modular co-ordination or staggered storeys ([E04H 3/00](#) takes precedence)**

### Definition statement

*This place covers:*

Buildings made of building modules;

Dwelling houses in general, i.e. apartment houses arranged in two or more levels;

Office buildings;

## Definition statement

Small buildings for limited occupation.

## References

### Limiting references

*This place does not cover:*

Buildings or groups of buildings for public or similar purposes; Institutions, e.g. infirmaries or prisons	<a href="#">E04H 3/00</a>
--	---------------------------

### Informative references

*Attention is drawn to the following places, which may be of interest for search:*

Buildings for two or more purposes, drive-in buildings	<a href="#">E04H 14/00</a>
Furniture or fittings for shops, storehouses or the like	<a href="#">A47F</a>
Domestic public installations	<a href="#">E03C</a>
Building construction in general	<a href="#">E04B 1/00</a>
Extraordinary structures	<a href="#">E04B 1/34</a>
Collapsible, erectable or rotatable buildings	<a href="#">E04B 1/343</a>
Heat, sound or noise insulation, absorption or reflection for buildings	<a href="#">E04B 1/74</a>
Canalisation per se	<a href="#">F16L</a>
Air-conditioning or ventilation for buildings	<a href="#">F24F</a>

### Special rules of classification

Use also [E04B 2001/0053](#) - [E04B 2001/0092](#) to classify buildings characterised by their shape or layout grid.

## E04H 1/06

Office buildings; Banks ([E04H 1/12](#) takes precedence)

## References

### Limiting references

*This place does not cover:*

Small buildings or other erections for limited occupation, erected in the open air or arranged in buildings, e.g. kiosks, waiting shelters for bus stops or for filling stations, roofs for railway platforms, watchmen's huts or dressing cubicles	<a href="#">E04H 1/12</a>
---	---------------------------

### Informative references

*Attention is drawn to the following places, which may be of interest for search:*

Furniture or fittings for shops, storehouses or the like	<a href="#">A47F</a>
--	----------------------

## E04H 1/12

**Small buildings or other erections for limited occupation, erected in the open air or arranged in buildings, e.g. kiosks, waiting shelters for bus stops or for filling stations, roofs for railway platforms, watchmen's huts or dressing cubicles**

### References

#### Informative references

*Attention is drawn to the following places, which may be of interest for search:*

Transformer houses	<a href="#">E04H 5/04</a>
Structures against air-raid or other war like actions, arranged in or forming part of buildings, independent shelters	<a href="#">E04H 9/04</a>
Bathing or beach cabins	<a href="#">E04H 15/003</a>
Movable screens as household equipment	<a href="#">A47G 5/00</a>
Cabins for artificial hot-air or cold-air baths	<a href="#">A61H 33/00</a>
Fume cabinets	<a href="#">B08B 15/00</a>
Lavatories, urinals	<a href="#">E03D</a>
Collapsible, erectable or rotatable buildings	<a href="#">E04B 1/343</a>
Air-conditioning	<a href="#">F24F</a>

### Special rules of classification

Use [E04H 2001/1288](#) to classify sauna cabins, [E04H 2001/1283](#) to classify small buildings of the ISO-containers type, [E04H 2001/1294](#) to classify the booths for smoking.

## E04H 3/00

**Buildings or groups of buildings for public or similar purposes; Institutions, e.g. infirmaries or prisons**

### Definition statement

*This place covers:*

Buildings for hotels, restaurants, shops, department stores, museums, hospitals, mobile medical centres;

Public institutions like schools, prisons;

Buildings like e.g. stadiums, arenas or halls for meetings, entertainment and sport; Tribunes, grandstands and terraces for spectators, i.e. telescopic grandstands as well as foldable retractable or tiltable tribunes;

Other sporting buildings, like e.g. buildings housing swimming pools;

Buildings for theatres, concert halls, studios;

Stages, i.e. revolving stages or stages with shiftable or portable platforms;

Constructional features of auditoriums.

## References

### Informative references

Attention is drawn to the following places, which may be of interest for search:

Portions of buildings for individual occupation, e.g. cubicles	<a href="#">E04H 1/00</a>
Swimming pool coverings consisting of rigid elements	<a href="#">E04H 4/08</a>
Buildings against air-raid or other war-like actions or against adverse climate conditions	<a href="#">E04H 9/04</a> , <a href="#">E04H 9/16</a>
Buildings of drive-in type	<a href="#">E04H 14/00</a>
Chairs, stools, benches	<a href="#">A47C</a>
Furnishing or fitting in general, e.g. paying counters, furniture or installations specially adapted for supermarkets	<a href="#">A47F</a> , e.g. <a href="#">A47F 9/02</a> , <a href="#">A47F 10/00</a>
Equipment for theatres or concert halls	<a href="#">A63J</a>
Transport aspects	<a href="#">B65G</a>
Structures covering a large free area	<a href="#">E04B 1/342</a>
Collapsible, erectable or rotatable buildings	<a href="#">E04B 1/343</a>
Building details providing acoustical effects	<a href="#">E04B 1/99</a>
Roof structures with movable roof parts	<a href="#">E04B 7/16</a>
Coin-freed apparatus	<a href="#">G07F</a>

## Special rules of classification

Use [E04H 2003/142](#) to classify sporting buildings with vertically movable or tillable playing fields or sections, [E04H 2003/145](#) for those with reconfigurable seating arrangement and [E04H 2003/147](#) for those using horizontally movable sections of tribunes.

## E04H 3/02

### Hotels; Motels; Coffee-houses; Restaurants; Shops; Department stores

## References

### Informative references

Attention is drawn to the following places, which may be of interest for search:

Furnishing or fitting	<a href="#">A47F</a>
-----------------------	----------------------

## E04H 3/04

### Restaurants or shops having arrangements for self-service

## References

### Informative references

Attention is drawn to the following places, which may be of interest for search:

Paying counters	<a href="#">A47F 9/02</a>
Furniture or installations specially adapted for supermarkets	<a href="#">A47F 10/00</a>
Transport aspects	<a href="#">B65G</a>

Coin-freeed apparatus	<a href="#">G07F</a>
-----------------------	----------------------

## E04H 3/12

### Tribunes, grandstands or terraces for spectators

#### References

##### Informative references

Attention is drawn to the following places, which may be of interest for search:

Auditoriums	<a href="#">E04H 3/30</a>
Chairs, stools or benches	<a href="#">A47C</a>

## E04H 3/14

### Gymnasiums; Other sporting buildings

#### References

##### Informative references

Attention is drawn to the following places, which may be of interest for search:

Tribunes	<a href="#">E04H 3/12</a>
----------	---------------------------

## E04H 3/16

### for swimming

#### References

##### Informative references

Attention is drawn to the following places, which may be of interest for search:

Swimming or splash baths or pools	<a href="#">E04H 4/00</a>
-----------------------------------	---------------------------

## E04H 3/22

### Theatres; Concert halls; Studios for broadcasting, cinematography, television or similar purposes

#### References

##### Informative references

Attention is drawn to the following places, which may be of interest for search:

Drive-in buildings	<a href="#">E04H 14/00</a>
Equipment for theatres or concert halls	<a href="#">A63J</a>
Vehicles specially adapted to carry a theatre or stage	<a href="#">B60P 3/025</a>

**E04H 3/26****Revolving stages; Stages able to be lowered****References****Informative references**

*Attention is drawn to the following places, which may be of interest for search:*

Devices for raising or lowering persons	<a href="#">A63J 5/12</a>
---	---------------------------

**E04H 3/30****Constructional features of auditoriums****References****Informative references**

*Attention is drawn to the following places, which may be of interest for search:*

Chairs, stools or benches	<a href="#">A47C</a>
Building details providing acoustical effects	<a href="#">E04B 1/99</a>

**E04H 4/00****Swimming or splash baths or pools****Definition statement**

*This place covers:*

Devices for producing waves in swimming pools;

Floating swimming pools;

Easy movable and transportable swimming pools, i.e. with inflatable parts or made of shell type elements or of panes;

Safety devices for swimming pools, i.e. floors adjustable in height;

Swimming pool coverings made of rigid elements or of flexible materials; Devices or arrangements for circulating water, i.e. devices for removal of polluted water, cleaning baths or for water treatment;

Devices and accessories peculiar to swimming pools, i.e. coping elements, liner fixing means, step units, lighting means;

Devices and apparatuses specially adapted for cleaning, i.e. hand-held strainers, powered cleaners, suction cleaners, self-propelled cleaners.

**References****Informative references**

*Attention is drawn to the following places, which may be of interest for search:*

Sanitary equipment; Accessories therefor, e.g. toilet accessories	<a href="#">A47K</a>
Wave-producers for baths	<a href="#">A47K 3/10</a>

Bathing devices for special therapeutic or hygienic purposes	<a href="#">A61H</a>
Devices for generating a current of water in swimming pools, e.g. for teaching swimming	<a href="#">A63B 69/125</a>
Walls made by casting, pouring, or tamping in situ , e.g. in permanent forms	<a href="#">E04B 2/86</a>
Wave-producing pumps	<a href="#">F04D 35/00</a>

### Special rules of classification

Use [E04H 2004/0068](#) to classify pools made of plastic shells or plastic elements including at least parts of walls and floors.

## E04H 4/12

**Devices or arrangements for circulating water {, i.e. devices for removal of polluted water, cleaning baths or for water treatment}**

### Definition statement

*This place covers:*

Treatment of water for swimming pools;

Devices for removal of polluted water, i.e. circumferential gutters;

Bottom drains;

Recirculating pumps for swimming pool water, arm-mounted debris traps; floating skimmers and skimmers integrated in the pool wall;

Devices for distributing chemical products in the water of swimming pools and systems for heating the water content of swimming pools.

### References

#### Informative references

*Attention is drawn to the following places, which may be of interest for search:*

Water separation aspects, i.e. filters	<a href="#">B01D</a>
Treatment of water	<a href="#">C02F</a>
Solar collectors using pools	<a href="#">F24S 10/10</a> , <a href="#">F24S 10/17</a>
Solar heat systems for swimming pools	<a href="#">F24S 20/02</a>

## E04H 4/14

**Parts, details or accessories not otherwise provided for**

### Definition statement

*This place covers:*

Devices and accessories peculiar to swimming pools, i.e. coping elements; Liner fixing means;

Means for facilitating access, e.g. step units or slides;

Dividing means for swimming pool, e.g. panels, bulkheads;

## Definition statement

Lighting means.

## References

### References out of a residual place

Examples of places in relation to which this place is residual:

Invalid-lifting devices for swimming pools	<a href="#">A61G 7/1005</a>
--	-----------------------------

## Special rules of classification

Use [E04H 2004/146](#) and [E04H 2004/147](#) to classify the fixing aspects of the liners.

## E04H 4/16

### specially adapted for cleaning

#### Definition statement

*This place covers:*

Devices and apparatuses specially adapted for cleaning the swimming pool, e.g. hand-held strainers, powered cleaners, suction cleaners, self-propelled cleaners, cleaners wherein the propulsion results from an intermittent interruption of the waterflow through the cleaner;

Connection between the cleaners and the water circulation system;

Cleaning whips;

Pool nozzles.

## References

### Informative references

Attention is drawn to the following places, which may be of interest for search:

Brushes and bristles	<a href="#">A46B</a>
Cleaning devices specially adapted for vessels	<a href="#">B63B 59/00</a>
Cleaning or keeping clear the surface of open water	<a href="#">E02B 15/00</a>

## E04H 5/00

### Buildings or groups of buildings for industrial or agricultural purposes

#### Definition statement

*This place covers:*

Buildings for industrial purposes, e.g. for power-plants, factories, data processing centers;

Buildings forming parts of cooling plants;

Transformer houses;

Substations or switchgear houses;

Pits for inspection or services and coverings therefore;

Buildings for agricultural purposes;



Cooling towers.

## References

### Informative references

*Attention is drawn to the following places, which may be of interest for search:*

Silos	<a href="#">E04H 7/22</a>
Manure storage places	<a href="#">A01C 3/02</a>
Greenhouses	<a href="#">A01G 9/14</a>
Spray booths	<a href="#">B05B 16/00</a>
Servicing, maintaining, repairing or refitting vehicles	<a href="#">B60S 5/00</a>
Manhole shafts or other inspection chambers in general	<a href="#">E02D 29/12</a>
Building constructions in general	<a href="#">E04B 1/00</a>
Computer floors	<a href="#">E04F</a>
Ventilation	<a href="#">F24F</a>
Cooling equipment	<a href="#">F28F</a>
Constructional details common to different types of electric apparatus, e.g. computers	<a href="#">H05K 7/00</a>

## E04H 5/02

**Buildings or groups of buildings for industrial purposes, e.g. for power-plants or factories (buildings forming part of cooling plants [E04H 5/10](#))**

## References

### Limiting references

*This place does not cover:*

Buildings forming part of cooling plants	<a href="#">E04H 5/10</a>
--	---------------------------

### Informative references

*Attention is drawn to the following places, which may be of interest for search:*

Building structures for parking vehicles	<a href="#">E04H 6/00</a>
--	---------------------------

## E04H 5/06

**Pits or building structures for inspection or services**

## References

### Informative references

*Attention is drawn to the following places, which may be of interest for search:*

Manhole shafts or other inspection chambers in general	<a href="#">E02D 29/12</a>
--	----------------------------

**E04H 5/08****Buildings or groups of buildings for agricultural purposes (silos [E04H 7/22](#))****References****Limiting references***This place does not cover:*

Silos	<a href="#">E04H 7/22</a>
-------	---------------------------

**Informative references***Attention is drawn to the following places, which may be of interest for search:*

Manure storage places	<a href="#">A01C 3/02</a>
Greenhouses	<a href="#">A01G 9/14</a>

**E04H 5/12****Cooling towers****References****Informative references***Attention is drawn to the following places, which may be of interest for search:*

Towers in general	<a href="#">E04H 12/00</a>
Cooling equipment	<a href="#">F28</a>

**E04H 6/00****Buildings for parking cars, rolling-stock, aircraft, vessels or like vehicles, e.g. garages****Definition statement***This place covers:*

Garages for vehicles on two wheels;

Small garages, for one or two cars, like e.g. carports, small garages of the wheeled, hinged, foldable, telescopic, swinging or otherwise movable type, small garages using tiltable floors or ramps;

Garages for many vehicles with mechanical means for shifting or lifting vehicles or without mechanical means for shifting or lifting vehicles, like e.g. with means for transport in vertical direction only or independently in vertical and horizontal directions, either the cars rolling freely from the transfer means or using different transfer means or by the use of movable platforms for horizontal transport or characterised by the use of turntables, rotary elevators or the like on which the cars are not permanently parked;

Devices or arrangements peculiar to garages, not covered elsewhere, e.g. securing devices, safety devices, automatically operated car-parks, devices for collecting oil or further fluids under parked cars.

## References

### Informative references

Attention is drawn to the following places, which may be of interest for search:

Tents for use as garages	<a href="#">E04H 15/00</a>
Servicing, maintaining, repairing or refitting vehicles	<a href="#">B60S 5/00</a>
Turntables	<a href="#">B60S 13/02</a>
Bicycle stands	<a href="#">B62H</a>
Storing of vessels on land	<a href="#">B63C 15/00</a>
Storage devices	<a href="#">B65G 1/02</a>
Lifting frames	<a href="#">B66F</a>
Construction of ground-supported surfaces	<a href="#">E01C</a>
Marking of parking areas on the ground	<a href="#">E01F 9/50</a>
Building constructions in general	<a href="#">E04B 1/00</a>
Structures covering a large free area, whether open-sided or not, e.g. hangars, halls	<a href="#">E04B 1/342</a>
Solar heat collectors	<a href="#">F24S</a>

## Glossary of terms

In this place, the following terms or expressions are used with the meaning indicated:

rolling-stock	railway vehicles, including locomotives, freight carriages and passenger coaches.
---------------	---

## E04H 6/02

Small garages, e.g. for one or two cars (attached to, or supported by, the vehicle [B62D](#))

## References

### Limiting references

This place does not cover:

Attached to, or supported by, the vehicle	<a href="#">B62D</a>
---	----------------------

### Informative references

Attention is drawn to the following places, which may be of interest for search:

Prefabricated and with undivided interior	<a href="#">E04B 1/343</a>
---	----------------------------

**E04H 6/04****wheeled, hinged, foldable, telescopic, swinging or otherwise movable****References****Informative references***Attention is drawn to the following places, which may be of interest for search:*

Transportable or collapsible buildings in general	<a href="#">E04B 1/343</a>
---	----------------------------

**E04H 6/44****for storing aircraft****References****Informative references***Attention is drawn to the following places, which may be of interest for search:*

Structures covering a large free area	<a href="#">E04B 1/342</a>
---------------------------------------	----------------------------

**E04H 7/00**

**Construction or assembling of bulk storage containers employing civil engineering techniques in situ or off the site (tower aspects [E04H 12/00](#); storage aspects, e.g. floating roofs, sealing means, filling or discharging means [B65D](#), [B65G](#), [F17B](#), [F17C](#); foundations [E02D 27/38](#))**

**Definition statement***This place covers:*

Containers for fluids or gases mainly made of metal, with vertical axis, roof constructions therefore, with horizontal axis or ball shaped or mainly made of reinforced or prestressed concrete;

Containers for fluent solids, e.g. silos, bunkers, supports therefore, e.g. with or without perforated walls mainly made of reinforced concrete, of metal or of wood.

**References****Limiting references***This place does not cover:*

Tower aspects	<a href="#">E04H 12/00</a>
Storage aspects, e.g. floating roofs, sealing means, filling or discharging means	<a href="#">B65D</a> , <a href="#">B65G</a> , <a href="#">F17B</a> , <a href="#">F17C</a>
Foundations	<a href="#">E02D 27/38</a>

**Informative references***Attention is drawn to the following places, which may be of interest for search:*

Covers, roofs or other structures for covering manure storage places	<a href="#">A01C 3/02</a>
Storing agricultural produces	<a href="#">A01F 25/00</a>

Arrangements or adaptations of tanks for water supply	<a href="#">E03B 11/00</a>
Processes or apparatus for separating the constituents of gaseous mixtures involving the use of liquefaction or solidification; Details of the apparatus used	<a href="#">F25J 3/00</a>
Drying solid materials	<a href="#">F26B 5/00</a>

### Special rules of classification

Use [E04H 2007/225](#) to classify the silos with retaining wall type elements, e.g. trench silos.

## E04H 7/02

### Containers for fluids or gases; Supports therefor

#### References

##### Informative references

Attention is drawn to the following places, which may be of interest for search:

Arrangements or adaptations of tanks for water supply	<a href="#">E03B 11/00</a>
---	----------------------------

## E04H 9/00

**Buildings, groups of buildings or shelters adapted to withstand or provide protection against abnormal external influences, e.g. war-like action, earthquake or extreme climate (foundation aspects [E02D](#))**

#### Definition statement

*This place covers:*

Buildings, or groups of buildings, or shelters adapted to withstand or provide protection against abnormal external influences, e.g. war-like action, earthquake, extreme climate.

#### References

##### Limiting references

*This place does not cover:*

Foundation aspects	<a href="#">E02D</a>
--------------------	----------------------

##### Informative references

Attention is drawn to the following places, which may be of interest for search:

Shelters for decontamination	<a href="#">E04H 1/1272</a>
Floating buildings	<a href="#">B63B</a>
Building constructions in general	<a href="#">E04B</a>
Bearings or like supports allowing movement	<a href="#">E04B 1/36</a>
Special details in regard to insulation or other protection	<a href="#">E04B 1/62</a>
Supporting structures for endangered or damaged existing buildings or parts thereof	<a href="#">E04G 23/04</a>
Doors or windows	<a href="#">E06B 5/00</a>

Protecting building openings	<a href="#">E06B 9/00</a>
Suppression of vibrations	<a href="#">F16F</a>
Air-conditioning or ventilation	<a href="#">F24F</a>
Camouflage	<a href="#">F41H 3/00</a>
Safety arrangements	<a href="#">F42D</a>
Cells or rooms shielded against dangerous radiation	<a href="#">G21F 7/00</a>

## E04H 9/02

withstanding earthquake or sinking of ground (foundations [E02D 27/34](#))

### Definition statement

*This place covers:*

Earthquake withstanding structures, having e.g. steel columns and beams or concrete columns;

Earthquake withstanding shelters and protection cells arranged inside of buildings;

Preventing constructional measures against earthquake damage in existing buildings;

Bearing, supporting or connecting construction for withstanding earthquake, damping devices having e.g. laminated structures of alternating elastomeric and rigid layers or structures comprising rolling elements like balls, pins.

### References

#### Informative references

*Attention is drawn to the following places, which may be of interest for search:*

Building protection making use of active or passive dynamic mass damping systems	<a href="#">E04H 9/0215</a>
Foundations	<a href="#">E02D</a>
Foundations for sinking or earthquake territories	<a href="#">E02D 27/34</a>
Bearings or like supports allowing movement	<a href="#">E04B 1/36</a>
Working measures for endangered or damaged existing buildings or parts thereof	<a href="#">E04G 23/00</a>

### Special rules of classification

Use [E04H 9/0235](#) to classify anti-seismic devices with hydraulic or pneumatic damper and [E04H 9/0237](#) to classify structural braces with damping devices.

Looping references between [E04H 9/02](#) and [E02D 27/34](#) have been identified. Until this inconsistency is resolved, the current classification practice in CPC is as follows: both references should be treated as informative.

**E04H 9/0215****{involving active or passive dynamic mass damping systems}****Definition statement***This place covers:*

Protection of buildings by reducing the movement of buildings, e.g. caused by earthquakes, using mass-spring system, or systems where the mass is actively moved in opposite phase to the building movement, or tanks with liquid mass, with or without baffles for impeding liquid movement.

**E04H 9/04****against air-raid or other war-like actions****References****Informative references***Attention is drawn to the following places, which may be of interest for search:*

Respiratory apparatus	<a href="#">A62B</a>
-----------------------	----------------------

**E04H 9/12****entirely underneath the level of the ground, e.g. air-raid galleries****References****Informative references***Attention is drawn to the following places, which may be of interest for search:*

Tunnels or galleries	<a href="#">E21D</a>
----------------------	----------------------

**E04H 12/00****Towers; Masts or poles; Chimney stacks; Water-towers; Methods of erecting such structures (cooling towers [E04H 5/12](#); derricks for oil drilling [E21B 15/00](#))****Definition statement***This place covers:*

Access covers or locks for openings in masts or poles;

Structures made of specified materials, like e.g. plastic or composite layer of resin and longitudinally arranged glass fibres;

Structures made of wood and truss-like structures made of wood;

Structures made of metal, truss-like structures made of metal, structures with truss-like sections combined with tubular-like sections, details of flanges for tubular masts;

Structures made of concrete, with or without internal or external reinforcements, pre-stressed structures;

Movable structures or having movable sections, e.g. rotatable, telescopic, with identical elements or with hinged sections;

## Definition statement

Side support means for towers, masts or poles, e.g. using guy ropes, struts;

Sockets or holders for poles or posts;

Cross arms;

Winding-towers for mines;

Chimney stacks, e.g. free-standing or similar ducts;

Water-towers;

Flag poles;

Arrangements for erecting and lowering towers, masts, poles, chimney stacks or the like.

## References

### Limiting references

*This place does not cover:*

Cooling-towers	<a href="#">E04H 5/12</a>
Derricks for oil drilling	<a href="#">E21B 15/00</a>

### Informative references

*Attention is drawn to the following places, which may be of interest for search:*

Flexible slalom gate poles	<a href="#">A63C 19/062</a>
Tanks	<a href="#">B65D 88/00</a>
Supports for road signs	<a href="#">E01F 9/60</a>
Flexible road sign supports	<a href="#">E01F 9/627</a>
Foundation piles	<a href="#">E02D 5/22</a>
Foundations for masts, poles or chimneys	<a href="#">E02D 27/42</a>
Use of high-level tanks	<a href="#">E03B 11/12</a>
Rotary buildings	<a href="#">E04B 1/346</a>
Structural elongated members in general	<a href="#">E04C 3/00</a>
Chimneys as part of a building	<a href="#">E04F 17/02</a>
Fixed climbing irons	<a href="#">E06C 9/04</a>
Mounting structures for wind motors	<a href="#">F03D</a>
Fastening means for cables or ropes	<a href="#">F16G 11/00</a>
Supports for aerials	<a href="#">H01Q 1/12</a>



**E04H 12/18**

movable or with movable sections, e.g. rotatable or telescopic

**References****Informative references**

Attention is drawn to the following places, which may be of interest for search:

Rotary buildings	<a href="#">E04B 1/346</a>
------------------	----------------------------

**E04H 12/20**

Side-supporting means therefor, e.g. using guy ropes or struts

**References****Informative references**

Attention is drawn to the following places, which may be of interest for search:

Ground anchors	<a href="#">E02D 5/80</a>
Fastening means for cables or ropes	<a href="#">F16G 11/00</a>

**E04H 12/22**

Sockets or holders for poles or posts {(for sports articles, e.g. floor sockets [A63B 71/023](#); for road signs [E01F 9/673](#))}

**Definition statement**

*This place covers:*

Sockets or holders for poles or posts driven or screwed into the ground;

Sockets or holders for poles or posts to be placed on the ground, e.g. filled with, water, sand or the like;

Mounting poles or posts to a holder, e.g. on a flat base, in a socket;

Clamping poles or posts on a stub;

Means for adjusting the orientation of the post or pole;

Holders used for protection, repair or reinforcement of the post or pole.

**References****Limiting references**

*This place does not cover:*

For sports articles, e.g. floor sockets	<a href="#">A63B 71/023</a>
For road signs	<a href="#">E01F 9/673</a>

**Informative references**

Attention is drawn to the following places, which may be of interest for search:

Pegs, stakes or the like for tents	<a href="#">E04H 15/62</a>
Anchoring means for fence posts	<a href="#">E04H 17/08</a> , <a href="#">E04H 17/22</a>
Other umbrellas	<a href="#">A45B 23/00</a>
Article supports adapted to be stuck into the ground	<a href="#">A45F 3/44</a>
Christmas tree stands	<a href="#">A47G 33/12</a>
Break away mountings	<a href="#">E01F 9/631</a>
Sockets or holders for road signs	<a href="#">E01F 9/673</a>
Foundation piles	<a href="#">E02D 5/22</a>
Ground anchors	<a href="#">E02D 5/80</a>
Foundations for poles, masts or chimneys	<a href="#">E02D 27/42</a>

**E04H 12/26****Winding towers for mines****References****Informative references**

Attention is drawn to the following places, which may be of interest for search:

Elevators	<a href="#">B66B</a>
-----------	----------------------

**E04H 12/28**

**Chimney stacks, e.g. free-standing, or similar ducts (chimneys as part of buildings [E04F 17/02](#))**

**References****Limiting references**

This place does not cover:

Chimneys as part of buildings	<a href="#">E04F 17/02</a>
-------------------------------	----------------------------

**Informative references**

Attention is drawn to the following places, which may be of interest for search:

Foundations	<a href="#">E02D 27/42</a>
Connections between furnace and smoke stack, chimney equipment	<a href="#">F23J</a>

**E04H 12/30****Water-towers****References****Informative references**

*Attention is drawn to the following places, which may be of interest for search:*

Tanks	<a href="#">B65D 88/00</a>
Use of high-level tanks	<a href="#">E03B 11/12</a>

**E04H 12/32****Flagpoles****References****Informative references**

*Attention is drawn to the following places, which may be of interest for search:*

Flags, banners, mountings therefor	<a href="#">G09F 17/00</a>
------------------------------------	----------------------------

**E04H 12/34****Arrangements for erecting or lowering towers, masts, poles, chimney stacks, or the like****Definition statement**

*This place covers:*

Arrangements for casting in situ concrete towers or the like;

Arrangements for stacking tower sections on top of each other;

Arrangements for lifting tower sections for placing additional sections under them;

Arrangements for tilting up whole structures or sections thereof;

Arrangements for setting poles in the ground;

Arrangements for demolition towers or the like.

**References****Informative references**

*Attention is drawn to the following places, which may be of interest for search:*

Elevators	<a href="#">B66D</a>
Devices for erecting masts or poles	<a href="#">B66F</a>
Erecting methods for wind motors	<a href="#">F03D 13/10</a>
Hoisting or lowering devices for lighting poles	<a href="#">F21V 21/36</a>

## E04H 13/00

### Monuments; Tombs; Burial vaults; Columbaria

#### Definition statement

*This place covers:*

Accessories for grave sites, e.g. liners, covers, vault lowering devices;

Funeral monuments, grave sites curbing or markers not making part of vaults;

Ventilation systems for tombs and burial vaults;

Columbaria, mausoleum with frontal access to vaults;

Memorials for cremation ashes.

#### References

##### Informative references

*Attention is drawn to the following places, which may be of interest for search:*

Coffins, urns	<a href="#">A61G 17/00</a>
Sculpture or other artistic features	<a href="#">B44</a>

## E04H 14/00

**Buildings for combinations of different purposes not covered by any single one of main groups [E04H 1/00](#)-[E04H 13/00](#) of this subclass, e.g. for double purpose ([E04H 3/02](#), [E04H 9/06](#) take precedence); Buildings of the drive-in type**

#### References

##### Limiting references

*This place does not cover:*

Hotels; Motels; Coffee houses; Restaurants; Shops; Department stores	<a href="#">E04H 3/02</a>
Structures arranged in or forming part of buildings	<a href="#">E04H 9/06</a>

## E04H 15/00

### Tents or canopies, in general

#### Definition statement

*This place covers:*

Hunting, fishing huts or the like;

Bathing or beach cabins;

Tents used as toys;

Tents or tent-like constructions composed partially of rigid panels;

Tents combined or specially associated with other devices, e.g. of suspended type, partially supported by vehicles;

## Definition statement

Heating, lighting aspects for tents. Ventilating of tents and of tent roofs;

Tents having plural sectional covers, e.g. pavilions, vaulted tents, marquees, circus tents, plural tents, e.g. modular;

Inflatable tents;

Cone shaped tents;

Centre-pole supported tents, e.g. umbrella type tents;

Convertible tents, e.g. from one type to another type tent, from tent to canopy, from tent cover into diverse articles;

Parts, components, construction details, accessories, interior equipment, specially adapted for tents, e.g. guy-line equipment, skirts, thresholds;

Supporting means for tents, e.g. frames;

Covers, floors, closures, awnings sunshades;

Poles;

Pegs, stakes or the like;

Tent or canopy cover fastenings, e.g. the fixing members being a beading, the fixing members being locked by an additional locking member or the longitudinal recesses being made from two clamping members.

## References

### Informative references

Attention is drawn to the following places, which may be of interest for search:

Small buildings erected in open air	<a href="#">E04H 1/1205</a>
Holders for posts or poles to be driven into the ground	<a href="#">E04H 12/2215</a>
Umbrellas and umbrella details	<a href="#">A45B 23/00</a> , <a href="#">A45B 25/00</a>
Travelling or camp articles	<a href="#">A45F 3/00</a> , <a href="#">A45F 4/00</a>
Sacks or packs convertible into tents	<a href="#">A45F 4/04</a>
Coats or capes convertible into tent coverings	<a href="#">A45F 4/14</a>
Beds per se	<a href="#">A47C</a>
Beach towels	<a href="#">A47G 9/062</a>
Amusement arrangements	<a href="#">A63G 31/00</a>
Connection of valves to inflatable elastic bodies	<a href="#">B60C 29/00</a>
Trailer-type vehicles or caravans with foldable or readily disassembled living accommodation comprising flexible elements	<a href="#">B60P 3/341</a>
Sunshades, awnings, screens in general	<a href="#">E04F 10/00</a>
Inflatable forms for making walls or the like	<a href="#">E04G 11/04</a>
Devices for fastening or securing general constructional elements or machine parts together	<a href="#">F16B</a>
Lighting	<a href="#">F21</a>
Heating or ventilating	<a href="#">F24</a>

## Special rules of classification

Use [E04H 2015/201](#) - [E04H 2015/205](#) to classify different constructional aspects of the inflatable tents.

Use [E04H 2015/326](#) to classify the frame members connected by elastic cords and [E04H 2015/328](#) to classify the frames erected solely by guy lines.

## E04H 15/04

**suspended type, e.g. from trees or from cantilever supports**

### References

#### Informative references

*Attention is drawn to the following places, which may be of interest for search:*

Supporting frames	<a href="#">E04H 15/34</a>
-------------------	----------------------------

## E04H 15/10

**Heating, lighting or ventilating**

### References

#### Informative references

*Attention is drawn to the following places, which may be of interest for search:*

Heating, lighting or ventilating devices per se, see the relevant classes, e.g.	<a href="#">F21</a> , <a href="#">F24</a>
---	---

## E04H 15/20

**inflatable, e.g. shaped, strengthened or supported by fluid pressure**

### References

#### Informative references

*Attention is drawn to the following places, which may be of interest for search:*

Connection of valves to inflatable elastic bodies	<a href="#">B60C 29/00</a>
Inflatable forms for making walls, floors, ceilings or roofs in situ	<a href="#">E04G 11/04</a>

## E04H 15/30

**convertible, e.g. from one type tent to another type tent, from tent to canopy or from tent cover into diverse articles**

### References

#### Informative references

*Attention is drawn to the following places, which may be of interest for search:*

Sacks or packs convertible into tents	<a href="#">A45F 4/04</a>
---------------------------------------	---------------------------

Coats or capes convertible into tent coverings	<a href="#">A45F 4/14</a>
--	---------------------------

## E04H 15/34

### Supporting means, e.g. frames

#### Definition statement

*This place covers:*

Tent frames of arch-shaped type, expansible, e.g. extensible in a fan type manner, flexible and foldable;

External type frames, i.e. outside cover, also with flexible supporting means;

Collapsible, e.g. breakdown type, having connecting nodes, telescoping and foldable, foldable, i.e. having pivoted or hinged means, of lazy-tong type or characterised by connecting arches with lazy-tongues, of parallelogram type.

#### References

##### Informative references

*Attention is drawn to the following places, which may be of interest for search:*

Small garages in the form of an overhead canopy and small garages of the hinged, foldable or otherwise movable type	<a href="#">E04H 6/025</a> , <a href="#">E04H 6/04</a>
Devices for fastening or securing general constructional elements or machine parts together	<a href="#">F16B</a>

## E04H 15/44

### collapsible, e.g. breakdown type ([E04H 15/42](#) takes precedence)

#### References

##### Limiting references

*This place does not cover:*

External type, e.g. frame outside of cover	<a href="#">E04H 15/42</a>
--	----------------------------

##### Informative references

*Attention is drawn to the following places, which may be of interest for search:*

Building structures having collapsible parts in general	<a href="#">E04B 1/343</a>
---	----------------------------

**E04H 15/54****Covers of tents or canopies****References****Informative references**

*Attention is drawn to the following places, which may be of interest for search:*

Ventilated tent roofs	<a href="#">E04H 15/16</a>
-----------------------	----------------------------

**E04H 17/00**

**Fencing, e.g. fences, enclosures, corrals (features peculiar to electrified fences [A01K 3/00](#), [H05C](#); means for allowing passage through fences, barriers, or the like [E06B 11/00](#))**

**Definition statement**

*This place covers:*

Anti-climbing devices, e.g. fixed or rotary spikes;

Wire fencing;

Fences constructed of rigid elements;

Fences using prefabricated panel-like elements;

Posts for fences and anchoring means therefore;

Devices for erecting and removing fences

**References****Limiting references**

*This place does not cover:*

Features peculiar to electrified fences	<a href="#">A01K 3/00</a> , <a href="#">H05C</a>
Means for allowing passage through fences, barriers, or the like	<a href="#">E06B 11/00</a>

**Informative references**

*Attention is drawn to the following places, which may be of interest for search:*

Struts for masts	<a href="#">E04H 12/20</a>
Sockets for posts entering the ground	<a href="#">E04H 12/22</a>
Props, stays for agriculture	<a href="#">A01G 17/14</a>
Devices for preventing or obstructing access or passage of birds	<a href="#">A01M 29/32</a>
Wire nettings	<a href="#">B21F 27/00</a>
Devices for fastening or securing general constructional elements or machine parts together	<a href="#">F16B</a>
Turnbuckles	<a href="#">F16G 11/12</a>



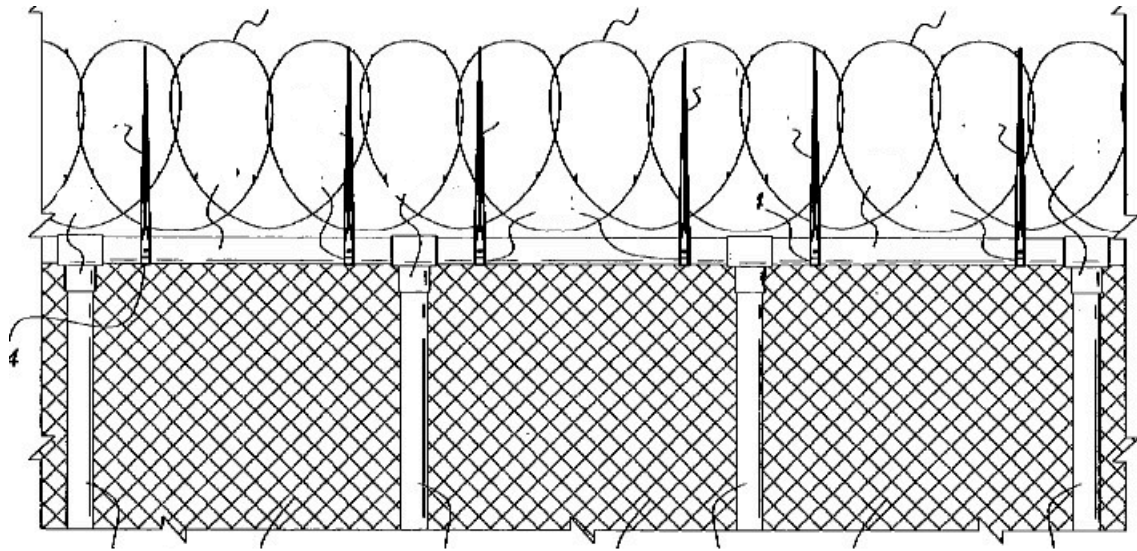
## E04H 17/003

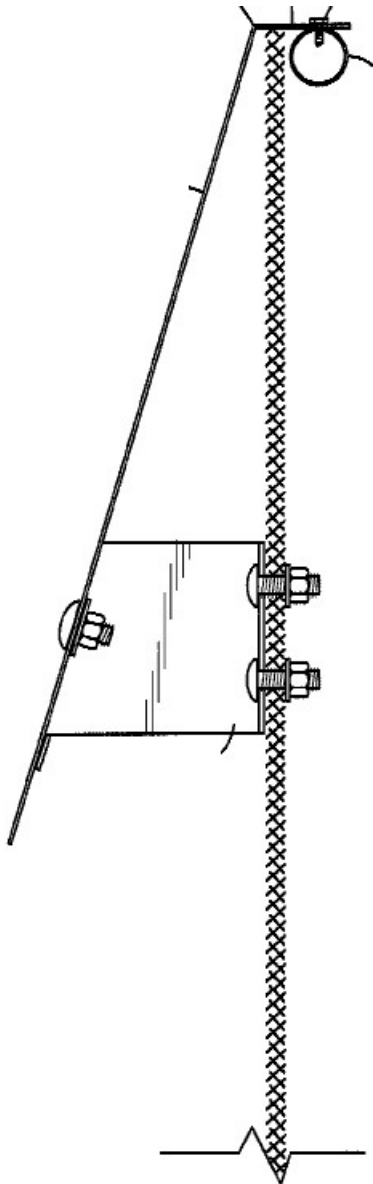
{Anti-climbing devices, e.g. fixed spikes}

### Definition statement

*This place covers:*

Illustrative example of subject matter classified in this group.





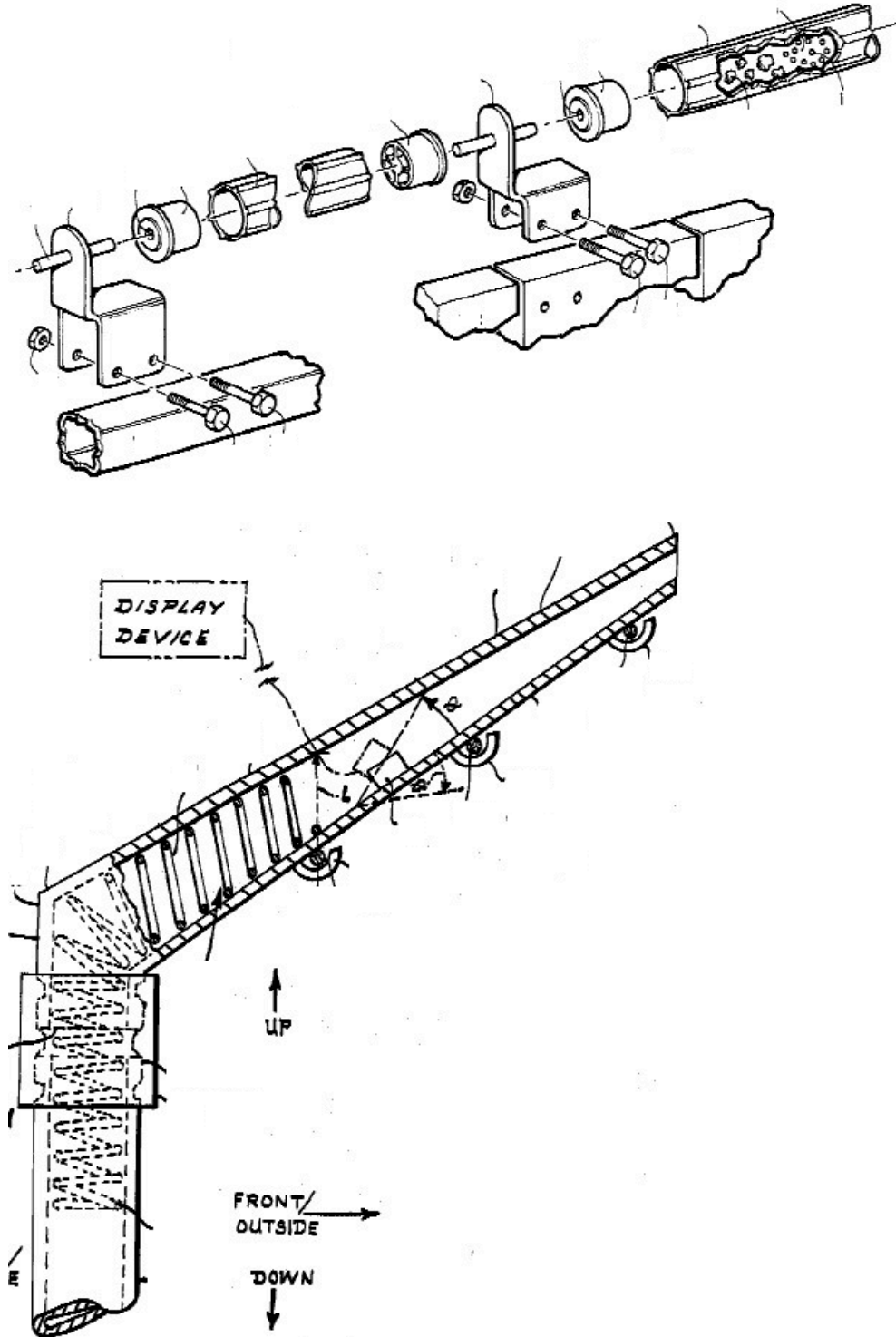
**E04H 17/004**

**{Unstable, e.g. rotatory or resiliently mounted fence panels, spikes}**

### Definition statement

*This place covers:*

Illustrative example of subject matter classified in this group.



## E04H 17/017

{Fencing provided with electric elements or components, e.g. fencing member or component, such as fence strands, post, panel or rail, provided with electric elements or components}

### Definition statement

*This place covers:*

Electrified wire fencing for any use or application.

### Relationships with other classification places

[A01K 3/005](#), electrified wire fencing for pasturing equipment, should be considered at all times since the subject matter overlaps.

## E04H 17/02

Wire fencing, e.g. made of wire mesh ([E04H 17/14](#) takes precedence)

### Definition statement

*This place covers:*

Wire mesh fencing.

### Relationships with other classification places

[A01K 3/00](#), pasturing equipment, should be considered at all times since the subject matter overlaps.

### References

#### Limiting references

*This place does not cover:*

Fences constructed of rigid elements, e.g. with additional wire fillings or with posts	<a href="#">E04H 17/14</a>
--	----------------------------

#### Informative references

*Attention is drawn to the following places, which may be of interest for search:*

Working or processing of wire, e.g. making wire nets	<a href="#">B21F</a> , e.g. <a href="#">B21F 27/00</a>
--	--

## E04H 17/04

characterised by the use of specially adapted wire, e.g. barbed wire {, wire mesh, toothed strip or the like; Coupling means therefor}

### Definition statement

*This place covers:*

Wire fencing including barbed wire, wire mesh, toothed strips, or the like for any use or application.

### Relationships with other classification places

[A01K 3/00](#), pasturing equipment, should be considered at all times since the subject matter overlaps.

**E04H 17/08**

Anchoring means therefor, e.g. specially-shaped parts entering the ground;  
Struts or the like

**References****Informative references**

Attention is drawn to the following places, which may be of interest for search:

Side-supporting means for towers or masts	<a href="#">E04H 12/20</a>
Sockets for posts	<a href="#">E04H 12/22</a>

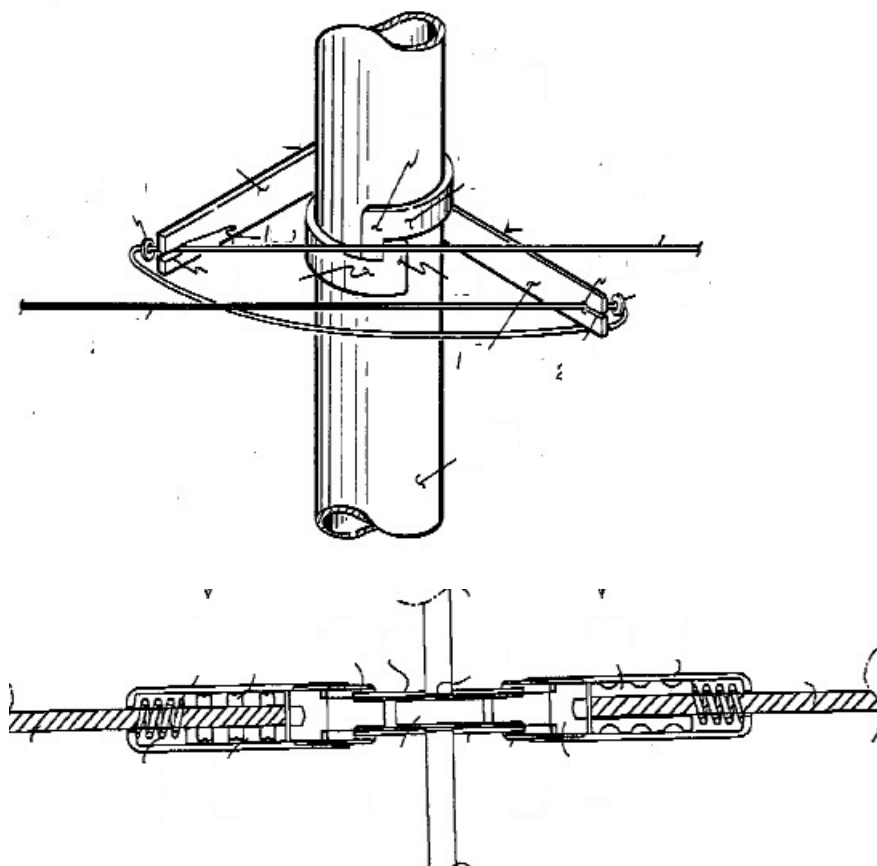
**E04H 17/131**

{the wire being tensioned by one or more springs}

**Definition statement**

*This place covers:*

Illustrative example of subject matter classified in this group.



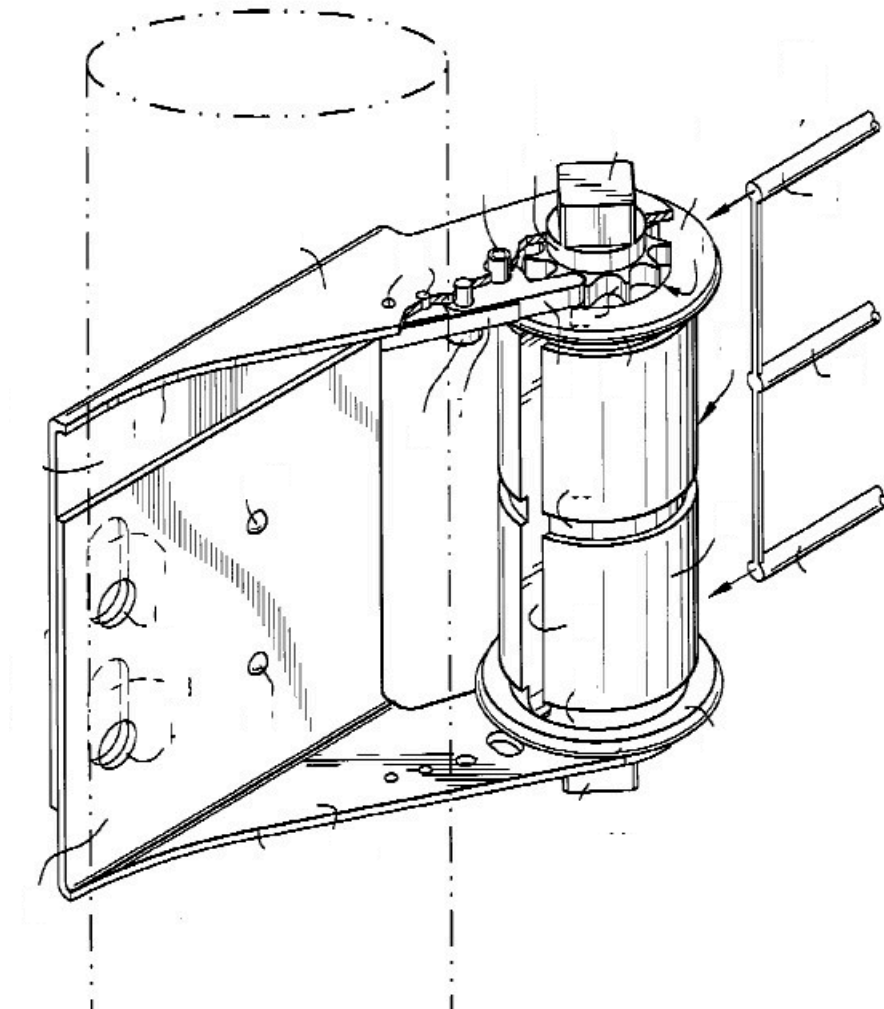
## E04H 17/135

{winder fixed to post via a bracket}

### Definition statement

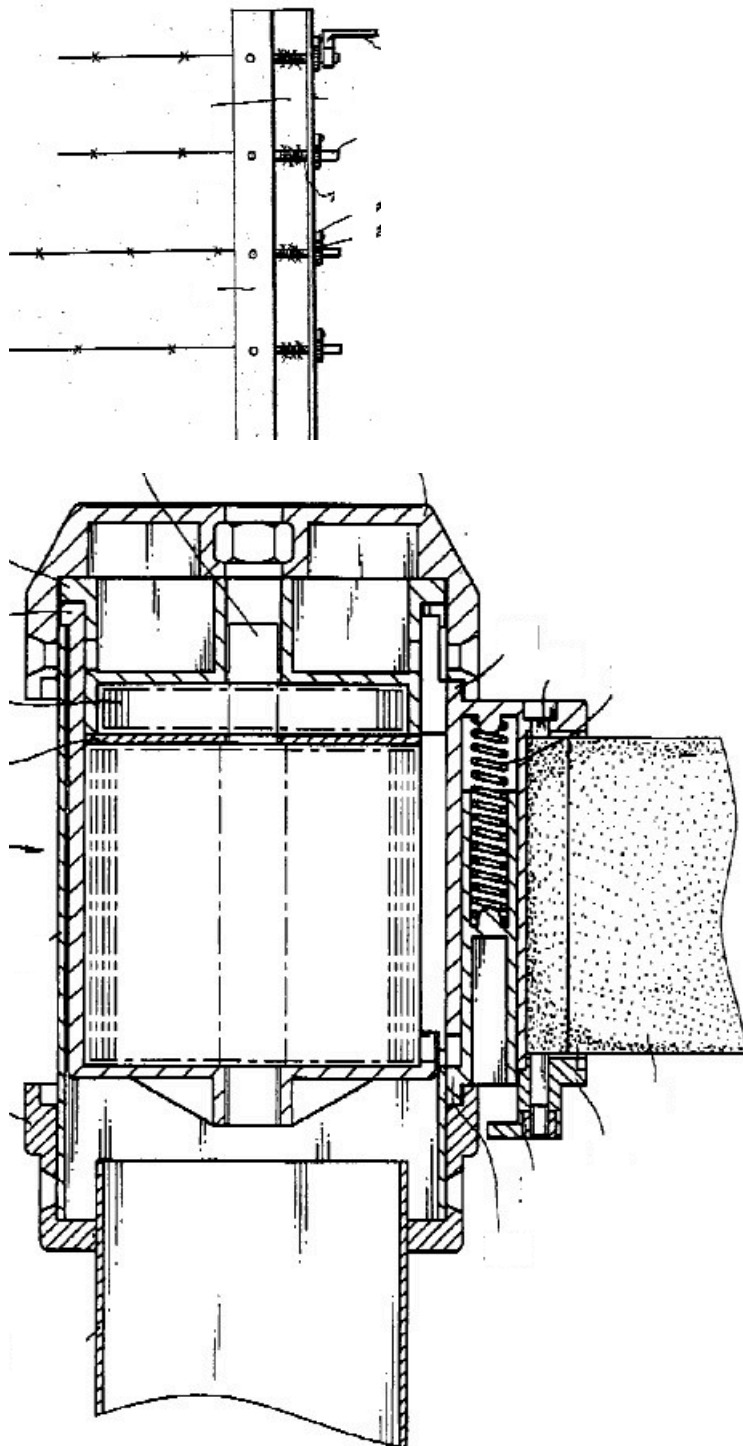
*This place covers:*

Illustrative example of subject matter classified in this group.



**E04H 17/139****{winder internal to post}****Definition statement***This place covers:*

Illustrative example of subject matter classified in this group.



## E04H 17/14

### Fences constructed of rigid elements, e.g. with additional wire fillings or with posts

#### Definition statement

*This place covers:*

Fences made of building blocks or of woven slats;

Post and rail fences with or without vertical cross-members and connections between rail and post for such fences;

Picket fences with pickets attached to the side or going through the horizontal members connections between the horizontal members and post for such fences;

Fences using prefabricated panel-like elements, e.g. panels or wired panels with or without frame, with cross members, fitted in grooves of posts;

Corrals;

Posts for frames and anchoring means therefore;

Connections for attaching additional wire to frames, posts or railings

#### References

##### Informative references

*Attention is drawn to the following places, which may be of interest for search:*

Safety devices for pool	<a href="#">E04H 4/06</a>
Sockets for posts entering the ground	<a href="#">E04H 12/22</a>
Arrangements for absorbing or reflecting air-transmitted noise from road or railway traffic	<a href="#">E01F 8/00</a>
Arrangements for obstructing or restricting traffic	<a href="#">E01F 13/00</a>
Removable non-load-bearing partitions	<a href="#">E04B 2/74</a>
Handrails, balusters	<a href="#">E04F 11/00</a>
Devices for fastening or securing general constructional elements or machine parts together	<a href="#">F16B</a>

#### Special rules of classification

See [E04H 17/006](#) to classify the caps for posts, [E04H 17/1445](#) to classify the fences with pivotable slats for reduced wind resistance or for adjusting visibility, [E04H 17/1447](#) - [E04H 17/1488](#) to classify the different details of the connections between rails and posts.



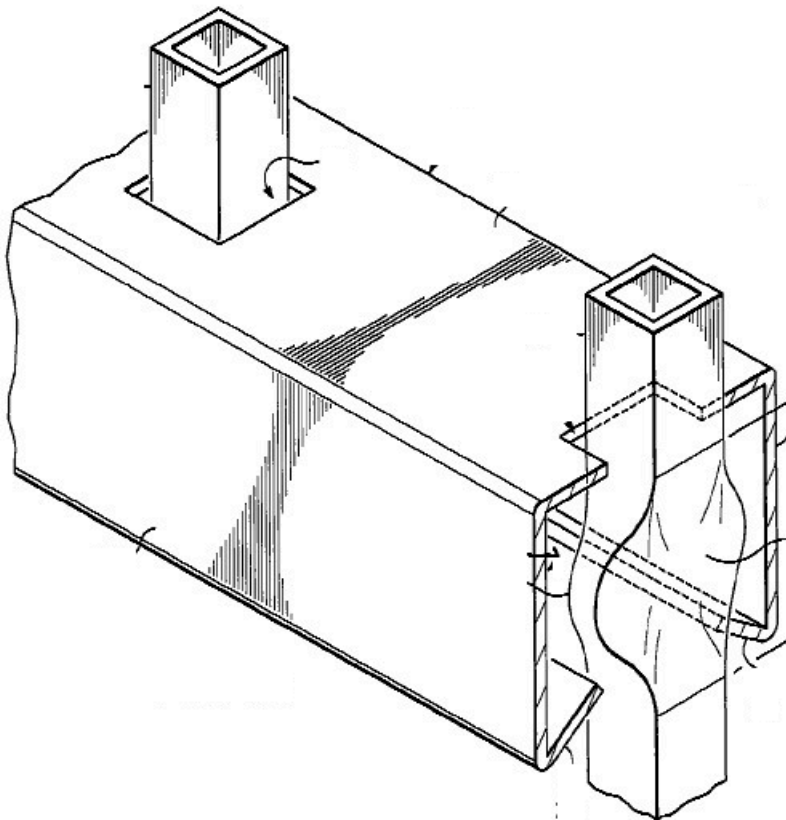
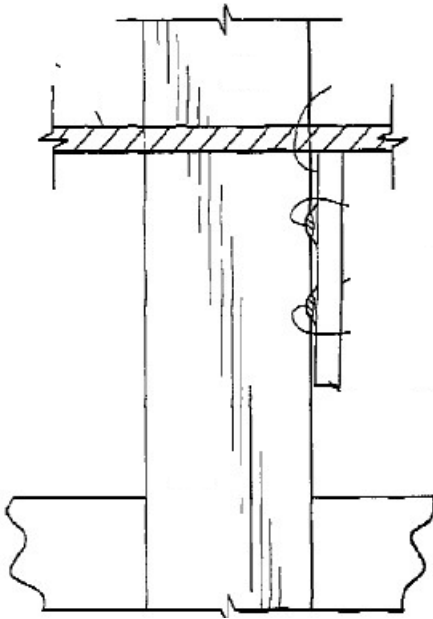
## E04H 17/145

{being welded, bonded or deformed in-situ}

### Definition statement

*This place covers:*

Illustrative example of subject matter classified in this group.



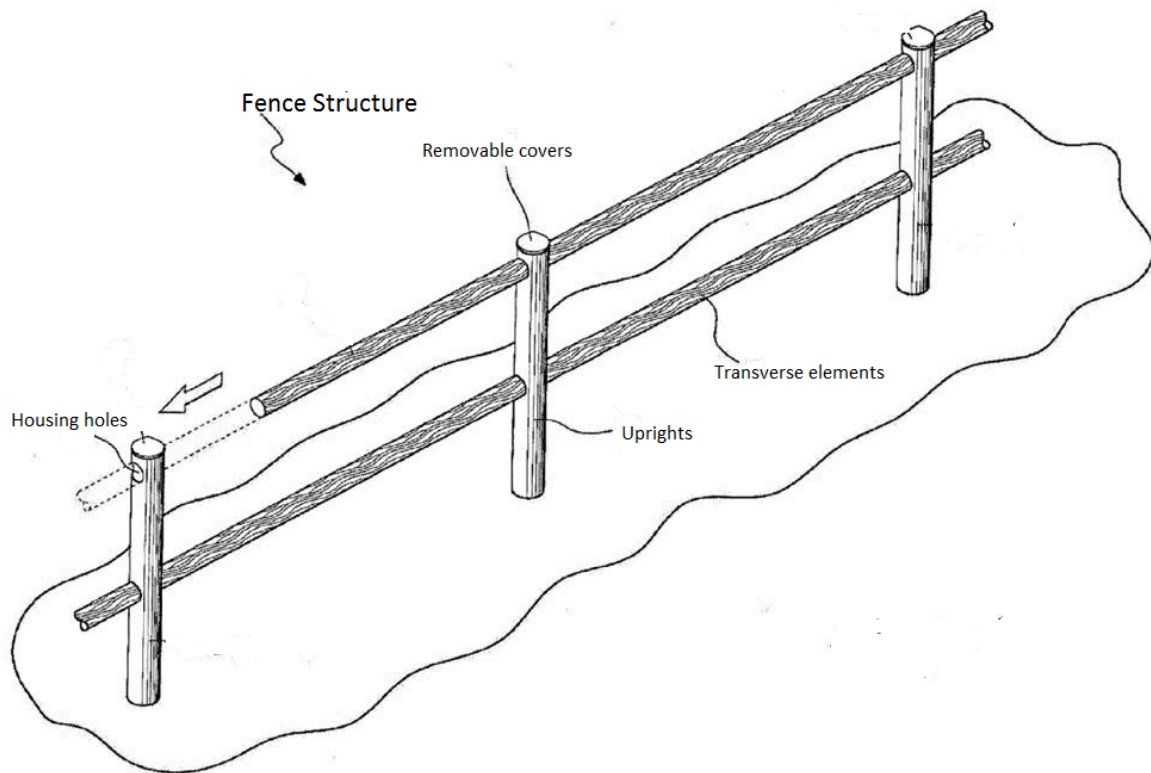
**E04H 17/1465**

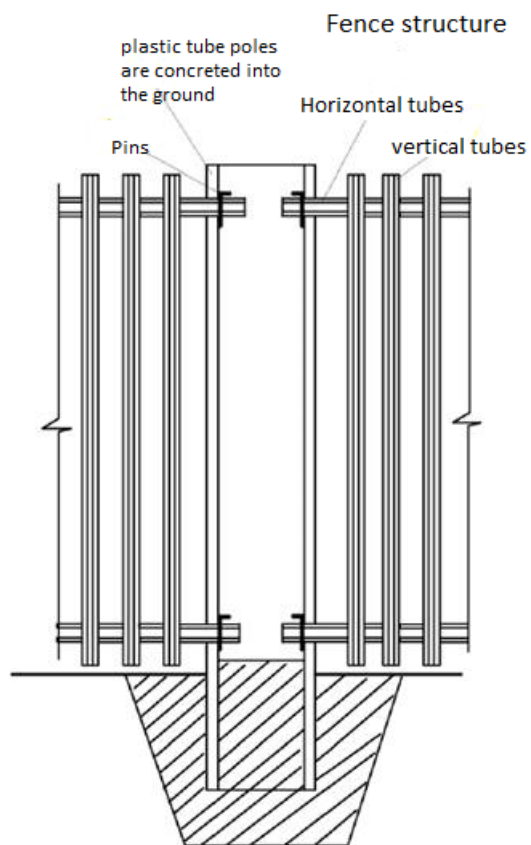
**{the rails being supported within blind or through holes of the posts}**

**Definition statement**

*This place covers:*

Illustrative example of subject matter classified in this group.





**E04H 17/1478**

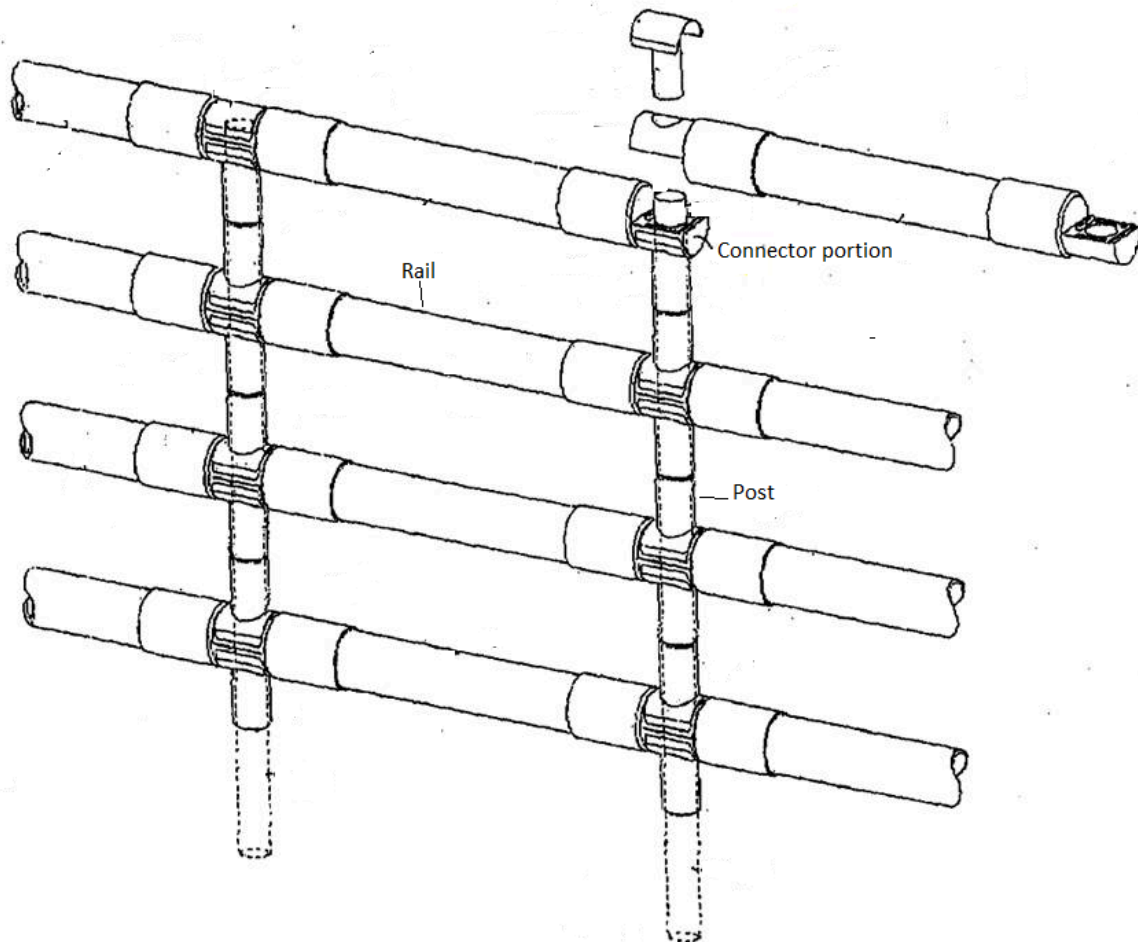
{the posts extending through apertures or cut-outs in the rails}

**Definition statement**

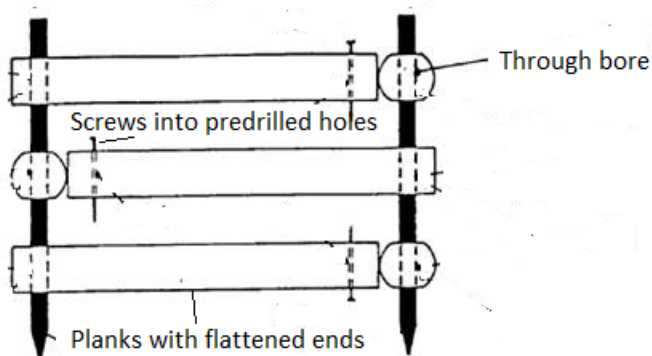
*This place covers:*

Illustrative example of subject matter classified in this group.

**Modular Fence System (Post and Rail type)**



**Fence Kit for garden and landscape design**



## E04H 17/164

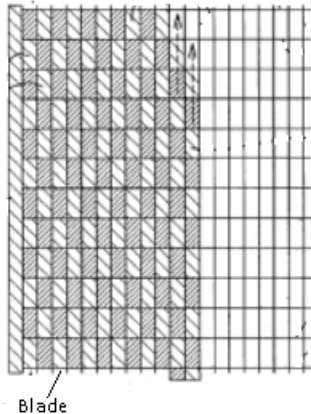
{occultation devices therefor, e.g. slats, fence liners or panels blocking view therethrough}

### Definition statement

*This place covers:*

Illustrative example of subject matter classified in this group.

Occultation Insert for wire panel



## E04H 17/22

Anchoring means therefor, e.g. specially-shaped parts entering the ground; Struts or the like

### References

#### Informative references

Attention is drawn to the following places, which may be of interest for search:

Side-supporting means for towers or masts	<a href="#">E04H 12/20</a>
Sockets for posts	<a href="#">E04H 12/22</a>

## E04H 17/26

Devices for erecting or removing fences

### Definition statement

*This place covers:*

Devices for post and wire handling, e.g. for erecting, for removing posts or for stretching or winding wire or wire mesh;

Hand tools for winding fences, e.g. tying or splicing tools.

### Relationships with other classification places

Documents disclosing pile driving should be classified in [E02D 7/00](#).

Removing sheets piles bulkheads, piles, mould-pipes or other moulds belong to [E02D 9/00](#).

## References

### *Informative references*

*Attention is drawn to the following places, which may be of interest for search:*

Hand-operated hammers having the impact head in form of a sleeve slidable on a shaft	<a href="#">B25D 1/16</a>
Devices for lifting or lowering bulky or heavy goods	<a href="#">B66F</a>