

A61G

TRANSPORT, PERSONAL CONVEYANCES, OR ACCOMMODATION SPECIALLY ADAPTED FOR PATIENTS OR DISABLED PERSONS (appliances for aiding patients or disabled persons to walk [A61H 3/00](#)); OPERATING TABLES OR CHAIRS; CHAIRS FOR DENTISTRY; FUNERAL DEVICES (embalming corpses [A01N 1/00](#))

Definition statement

This place covers:

Specially adapted vehicles (e.g. ambulances, wheelchairs), handling apparatus (e.g., wheelchair lifts), or methods or devices (e.g., stretchers) for moving patients or disabled persons or deceased who are passive participants in their relocation (e.g., the persons are handled in a manner similar to loads) [also including user-propelled wheelchairs].

Personal conveyances

Specially adapted structures (e.g., hospital or treatment rooms for medical purposes, baby incubators) or devices (e.g., bedpans, hospital beds, trapeze or pull-up bars) used:

by patients or disabled persons for their personal physical needs and convenience or

for controlling the local environment of patients or disabled persons during treatment or recovery.

Specially adapted supporting surfaces for sustaining patients in a recumbent or seated position during recovery, surgery, dental work, or similar types of medical treatment.

Funeral devices

(e.g., coffins, caskets, urns, and associated attachments and accessories thereof)

Auxiliary appliances (e.g., trolleys for medicine) or accessories specially adapted for use with the other invention information covered by this subclass.

Relationships with other classification places

General relationship of [A61G](#) with subclasses for care or alteration of the human body

[A61G](#) does not cover apparatus or methods that are directly used on an individual's body to perform medical care and therapy or to alter it after death. The types of medical care, therapy, and body alterations not covered by [A61G](#) consist of:

treating a part of the body (e.g., filling teeth - [A61C](#)),

monitoring the body (e.g., eye testing - [A61B](#)),

determining a medical condition or illness of the body (e.g., radiation diagnosis – [A61B](#)),

investigating the body (e.g., autopsy equipment – [A61B](#)),

physically correcting or altering the body of living individuals (e.g., cataract surgery – [A61F](#)), and

physically preparing or altering the body of deceased individuals (e.g., embalming equipment - [A01N](#), cremation furnaces – [F23G](#)).

Subclasses [A01N](#), [A61B](#), [A61C](#), [A61F](#), [A61H](#), [A61K](#), [A61M](#), [A61N](#), and [F23G](#) provide appropriately for apparatus or methods for medical care, therapy, or body alterations of these types. The specific

Relationships with other classification places

classifications that are of interest for search purposes are specified in the references of [A61G](#) or its groups.

However, [A61G](#) does provide for specific structural modifications that merely facilitate the use of apparatus or methods of these types for medical care or therapy when in combination with subject matter that is otherwise appropriate for this subclass (e.g., special supports for patients with burns). [A61G](#) also provides for life supporting or sustaining devices that control the local environment during treatment or recovery of patients (e.g., baby incubators).

General relationship of [A61G](#) with vehicles adapted for use by disabled

[A61G](#) covers personal conveyances and "vehicle-like" conveyances (e.g., wheelchairs, stretchers) that are explicitly designed for use by only a single patient or disabled person and intended to normally travel relatively short distances along the ground or similar support surface (e.g., hallway).

The subclass for a specific type of standard roadway vehicle (i.e., vehicles designed and intended for general thoroughfare (roads) usage over long distances, such as [B62K](#) for cycles) covers their vehicles that have been specially adapted for use by a disabled operator.

The subclass for a specific type of "special-utility" vehicle (i.e., vehicles that have another primary purpose other than transport, such as riding lawn mowers or forklifts) covers their vehicles that have been specially adapted for use by a disabled operator.

References

Limiting references

This place does not cover:

Devices per se for enabling disabled persons to operate an apparatus or device not forming part of the body	A61F 4/00
Equipment for beds, treatment tables, floor frames or the like for extending or stretching	A61F 5/04
Restraining devices for the body or for body parts and restraining shirts that are used for non-surgical treatment of patients' bones or joints	A61F 5/37
Appliances for aiding invalids to walk about	A61H 3/00
Bathing devices for special therapeutic or hygienic purposes	A61H 33/00
For bicycles specially adapted for disabled riders	B62K 3/16
Cycles with more than two main road wheels	B62K 5/00
Inclined lifts associated with stairways for transporting disabled persons or wheelchairs	B66B 9/08
Illumination of operating tables	F21L , F21S , F21V

Informative references

Attention is drawn to the following places, which may be of interest for search:

For preserving of the dead bodies of humans, animals, or the parts thereof	A01N 1/00
Sanitary equipment; Accessories therefor, e.g. toilet accessories	A47K
For body washing or cleaning implements	A47K 7/00
For sanitary closets or urinals without flushing and chamber pots	A47K 11/00
Arrangements for supporting or fettering animals for veterinary purposes	A61D 3/00
For vehicles adapted to transport meat	B60P 3/05

For vehicles adapted to transport refrigerated goods	B60P 3/20
--	---------------------------

Special rules of classification

The class [A61G](#) uses for all sub-classes, groups and sub-groups a set of sub-groups which identify the following (additional) information:

Information related to the kind of patient or his position [A61G 2200/00](#).

General characteristics of devices [A61G 2203/00](#).

General identification or selection means [A61G 2205/00](#).

Devices for specific treatment or diagnosis [A61G 2210/00](#).

Adaptions of particular transporting means [A61G 2220/00](#).

Glossary of terms

In this place, the following terms or expressions are used with the meaning indicated:

Disabled person	a human being that is unable to do a basic physical task (e.g., walking) due to a physical or mental impairment/condition
Funeral device	apparatus associated with (e.g., coffin) or for performing (e.g., casket lowering device) activities connected with the burial, cremation, entombment, or other methods of honouring or disposing of (e.g., freeze drying) the remains of the body of a deceased individual
Patient	a human being awaiting or undergoing any form of (a) medical care (e.g., testing) or treatment by medical staff (e.g., doctors, dentists, midwives, chiropractors) or (b) physical tending (e.g., feeding) by caretakers (e.g., hospice or nursing home staff) due to impairment
Personal conveyance	a vehicle-like device (e.g., wheelchairs) that is: not specifically adapted for travelling significant distances (e.g., between cities) along thoroughfares (e.g., railways, roads, sidewalks) with normal traffic (e.g., trucks), explicitly designed (i.e., not merely adaptations of a standard production vehicle) for carrying, and intended to be limited to use by, a single patient or disabled person at any given time, and potentially capable of having either its movement controlled or powered by the patient or disabled person carried by it.

A61G 1/00

Stretchers

Definition statement

This place covers:

Stretchers are used to transport patients or to support them for a short time (less than 24h).

References

Limiting references

This place does not cover:

Longer time (more than 24h) support, Beds	A61G 7/00 , A61G 7/16
Transfer between supports, Lateral movement of patient	A61G 7/1025

Informative references

Attention is drawn to the following places, which may be of interest for search:

Evacuation equipment	A62B 1/00
Rafts	B63C 9/04

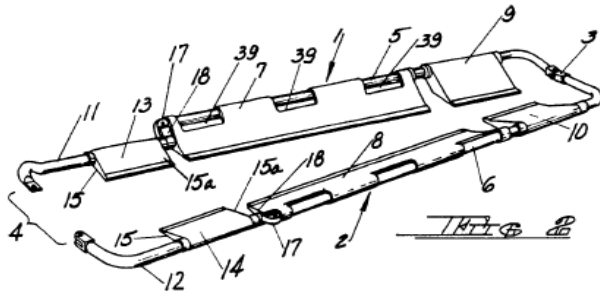
A61G 1/003

with facilities for picking up patients or disabled persons, e.g. break-away type or using endless belts {(devices in general for lifting disabled persons [A61G 7/10](#))}

Definition statement

This place covers:

Example of a stretcher of the break-away type [GB2122501A]:



References

Informative references

Attention is drawn to the following places, which may be of interest for search:

Devices in general for lifting patients or disabled persons	A61G 7/10
---	---------------------------

A61G 1/007

with skis or sled runners (ski vehicles [A63C 5/00](#))

Definition statement

This place covers:

Stretchers with skis etc. instead of wheels.

References

Informative references

Attention is drawn to the following places, which may be of interest for search:

Ski vehicles	A63C 5/00
Stretchers formed of skis or of accessories for skis	A63C 11/002

Special rules of classification

Stretchers having a supporting surface made of skis or accessories have to be classified in [A61G 1/00](#) -[A61G 1/06](#) depending on disclosed features (at least to classify the use as stretcher, possibly classified as additional information) and also in [A63C 11/002](#).

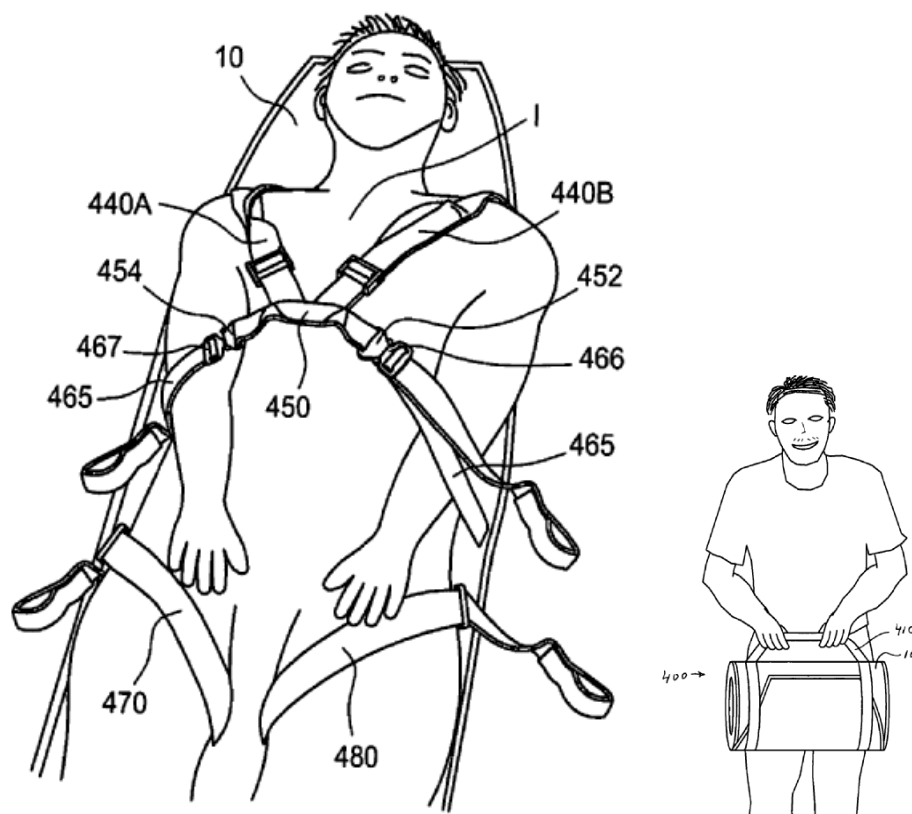
A61G 1/01

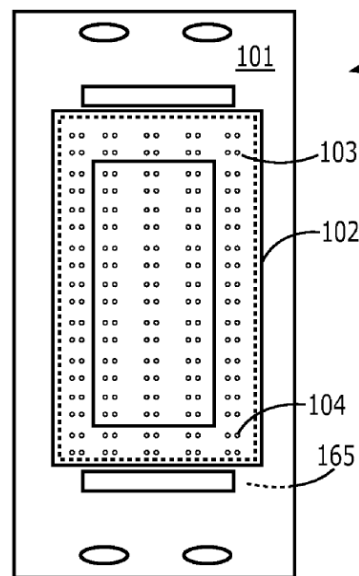
Sheets specially adapted for use as or with stretchers (restraining devices used in nursing [A61F 5/37](#))

Definition statement

This place covers:

Sheets (fabric-like or other flexible material) used as stretchers, like: [US2012272451]





Sheets as an accessory to stretchers, like: [US8141555]

References

Informative references

Attention is drawn to the following places, which may be of interest for search:

Restraining devices used in nursing	A61F 5/37
-------------------------------------	---------------------------

A61G 3/00

Ambulance aspects of vehicles; Vehicles with special provisions for transporting patients or disabled persons, or their personal conveyances, e.g. for facilitating access of, or for loading, wheelchairs

Definition statement

This place covers:

Also loading and transporting patients on stretchers, unused stretchers.

Special rules of classification

Supports for stretchers are classified in the groups [A61G 3/02](#) and [A61G 3/08](#), as well as their subgroups, if they have elements fixed to the vehicle. Stretcher supports without connection to a vehicle are classified in [A61G 1/06](#).

A61G 5/00

Chairs or personal conveyances specially adapted for patients or disabled persons, e.g. wheelchairs ({chairs with toilet conveniences [A47K 11/04](#); } devices enabling patients or disabled persons to operate an apparatus or device not forming part of the body [A61F 4/00](#); {running gear or propulsion features [B60K](#);} bicycles specially adapted for disabled riders [B62K 3/16](#) {; Invalid chairs having removable seats specially adapted to be transferred with the invalid to a vehicle and support the invalid during use of the vehicle [A61G 3/02](#)})

Definition statement

This place covers:

Supports for sitting patients or disabled people

References

Informative references

Attention is drawn to the following places, which may be of interest for search:

Chairs with toilet conveniences	A47K 11/04
Devices enabling disabled persons to operate an apparatus or device not forming part of the body	A61F 4/00
Running gear or propulsion features	B60K
Bicycles specially adapted for disabled riders	B62K 3/16

Special rules of classification

All chairs having a standing-up function are classified and searched in [A61G 5/14](#)

For conveyances other than wheelchairs applies the following:

Between the fields [B62K 5/00](#), [A61G 5/00](#), [B62D](#) and [B60L](#) the following was agreed (flexibility please):

- 1) Electric vehicle (or open vehicle where the user sit on it rather than in it) for elderly and invalid having a handlebar and three or more wheels will be classified in [B62K 5/00](#) and possibly in [A61G 5/00](#). They will be in principle searched in [B62K 5/00](#).
- 2) Arrangement of components, both in electric vehicle as in wheelchairs, like battery or transmission, will be classified and searched in [B60K](#).
- 3) Aspects of controls and monitoring of motors or battery and electric braking classified and searched in [B60L 7/00](#) or [B60L 50/00](#) - [B60L 58/00](#).
- 4) Electric vehicles where the user sits in should be classified and searched in [B62D 21/00](#).
- 5) Other aspects could of course be classified in different groups according to circumstances: [B62M](#), [A61G](#) etc.
- 6) Relating classes:

Wheels not otherwise provided for	B60B 19/00
Roller type	B60B 19/12

Ball type	B60B 19/14
Hub motors (electrically driven)	B60K 7/0007

A61G 5/06

with obstacle mounting facilities, e.g. for climbing stairs, {kerbs or steps}

References

Informative references

Attention is drawn to the following places, which may be of interest for search:

Wheelchairs for climbing stairs see in particular subgroup	A61G 5/061
Accessories for hand carts providing for travelling up or down a flight of stairs	B62B 5/02
Accessories for children's carriages providing for travelling up or down a flight of stairs	B62B 9/02

A61G 7/00

Beds specially adapted for nursing; Devices for lifting patients or disabled persons (stretchers with facilities for picking up patients or disabled persons [A61G 1/003](#))

Definition statement

This place covers:

Patient supports for periods longer than 24 hours; used in a hospital, nursing or other medical setting

Lifting devices used for nursing and transfer devices (between two supports).

References

Limiting references

This place does not cover:

Stretchers with facilities for picking up disabled persons	A61G 1/003
--	----------------------------

Informative references

Attention is drawn to the following places, which may be of interest for search:

Supports for shorter time (less than 24h) see Stretcher	A61G 1/00 – A61G 1/06
Vehicles with special provisions for transporting patients or disabled persons	A61G 3/00
Equipment for beds, treatment tables, floor frames or the like (only for IPC)	A61G 13/12
Sofas; Couches; Beds	A47C 17/00

A61G 7/08

Apparatus for transporting beds

Definition statement

This place covers:

also deployable wheels, propulsion of beds

References

Informative references

Attention is drawn to the following places, which may be of interest for search:

Steering or braking devices for castor wheels	A61G 7/0528
Motor vehicles characterised by the driver not being seated	B62D 51/00
Motor vehicles with retractable wheels	B62D 61/12

A61G 7/16

converting a lying surface into a chair

References

Informative references

Attention is drawn to the following places, which may be of interest for search:

Chairs or personal conveyances convertible to stretchers or beds	A61G 5/006
Chair beds	A47C 17/04

A61G 9/00

Bed-pans, urinals or other sanitary devices for bed-ridden persons; Cleaning devices therefor, e.g. combined with toilet-urinals (urinals worn by the patient [A61F 5/44](#))

Definition statement

This place covers:

Cleaning devices are covered insofar they are adapted to be used to clean bed-pans, urinals or sanitary devices

References

Limiting references

This place does not cover:

Washing and rinsing machines for crockery and tableware	A47L 15/00
---	----------------------------

Informative references

Attention is drawn to the following places, which may be of interest for search:

Suction cleaners adapted for additional purposes; Tables with suction openings for cleaning purposes; Containers for cleaning articles by suction; Suction cleaners adapted to cleaning of brushes; Suction cleaners adapted to taking-up liquids	A47L 7/00
Urinals worn by the patient	A61F 5/44

A61G 10/00

Treatment rooms {or enclosures} for medical purposes (baby incubators, couveuses [A61G 11/00](#); devices for gas baths with ozone, hydrogen or the like [A61H 33/14](#) {; for isolating individuals from external stimuli [A61M 21/0094](#)}; containers or portable cabins for affording breathing protection in general [A62B 31/00](#))

References**Informative references**

Attention is drawn to the following places, which may be of interest for search:

Baby incubators, couveuses	A61G 11/00
Devices for gas baths with ozone, hydrogen or the like	A61H 33/14
For isolating individuals from external stimuli	A61M 21/0094
Containers or portable cabins for affording breathing protection in general	A62B 31/00

A61G 10/02

with artificial climate; with means to maintain a desired pressure, e.g. for germ-free rooms (dust-free laboratory rooms [B01L 1/04](#); decompression arrangements [B63C 11/32](#); arrangements or adaptations in aircraft [B64D 13/00](#); air-conditioning in general [F24F](#))

References**Informative references**

Attention is drawn to the following places, which may be of interest for search:

Means providing sterile air at a surgical operation table or area	A61G 13/108
Dust-free laboratory rooms	B01L 1/04
Decompression arrangements	B63C 11/32
Arrangements or adaptations in aircraft	B64D 13/00
Air-conditioning in general	F24F

A61G 10/04

Oxygen tents {; Oxygen hoods}

References

Informative references

Attention is drawn to the following places, which may be of interest for search:

Respiratory or anaesthetic masks	A61M 16/06
----------------------------------	----------------------------

A61G 11/00

Baby-incubators; Couveuses

Definition statement

This place covers:

Hospital equipment that ill or premature babies lie in to be kept warm and given treatment.

References

Informative references

Attention is drawn to the following places, which may be of interest for search:

Incubators for poultry	A01K 41/00
Heating or cooling appliances for medical treatment	A61F 7/00
Devices to humidify the respiration air	A61M 16/16
Glove-boxes	B25J 21/02
Use of air currents for screening	F24F 9/00
ICT specially adapted for the operation of medical equipment or devices	G16H 40/60

A61G 12/00

Accommodation for nursing, e.g. in hospitals, not covered by groups [A61G 1/00](#) - [A61G 11/00](#), e.g. trolleys for transport of medicaments or food {(service or tea-tables, trolleys or wagons [A47B 31/00](#))}; Prescription lists

References

Informative references

Attention is drawn to the following places, which may be of interest for search:

Service or tea tables, trolleys or wagons	A47B 31/00
Drawers for tables, cabinets or like furniture	A47B 88/00
Card-filing arrangements	B42F 17/00
Identification bracelets	G09F 3/005
Wall trunking	H02G 3/0431

A61G 13/00

Operating tables; Auxiliary appliances therefor (illumination of operating tables [F21L](#), [F21S](#) or [F21V](#) {; adjustability of tables in general [A47B 9/00](#); tables for radiation diagnosis [A61B 6/04](#), drainage or irrigation pans, bags, or attachments [A61G 7/02](#), [A61G 7/0503](#)})

References

Informative references

Attention is drawn to the following places, which may be of interest for search:

Beds having adjustable frame	A61G 7/002
Beds with toilet conveniences	A61G 7/02
Holders, support devices for receptacles	A61G 7/0503
Adjustability of tables in general	A47B 9/00
Detecting, measuring or recording for diagnostic purposes involving electronic or nuclear magnetic resonance, means for positioning of patients	A61B 5/055
Apparatus for radiation diagnosis, positioning of patients	A61B 6/04
Illumination of operating tables	F21 , F21L , F21S , F21V

Special rules of classification

Operating tables with wheels are classified in [A61G 13/10](#)

A61G 15/00

Operating chairs; Dental chairs (barbers' chairs [A47C 1/04](#)); Accessories specially adapted therefor, e.g. work stands

References

Informative references

Attention is drawn to the following places, which may be of interest for search:

Barbers' chairs	A47C 1/04
Apparatus for radiation diagnosis, positioning patients	A61B 6/04

A61G 15/02

Chairs with means to adjust position of patient; Controls therefor

References

Informative references

Attention is drawn to the following places, which may be of interest for search:

Reclining or easy chairs having coupled adjustable supporting parts	A47C 1/031 - A47C 1/037
Seating furniture changeable to beds by tilting or pivoting the back-rest	A47C 17/16

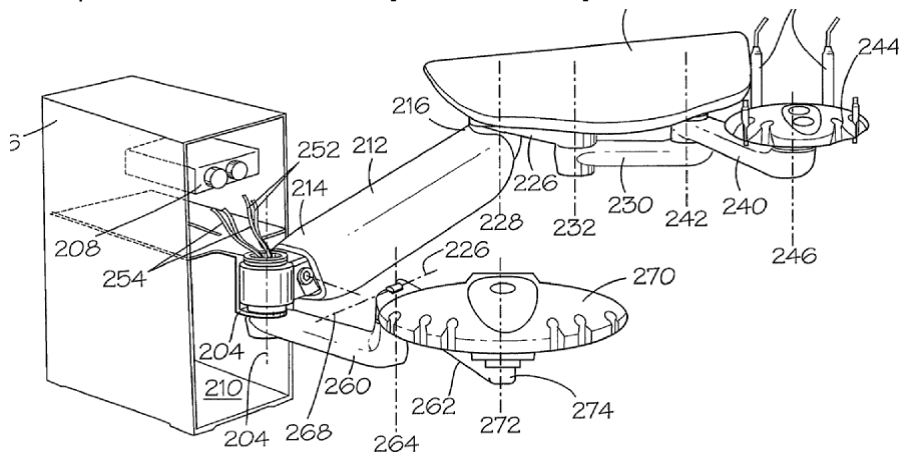
A61G 15/14

Dental work stands; Accessories therefor

Definition statement

This place covers:

Example of a dental workstand: [US2010159415]



References

Informative references

Attention is drawn to the following places, which may be of interest for search:

Stands for scientific apparatus, attachment means	F16M 11/04 , F16M 11/14
---	---

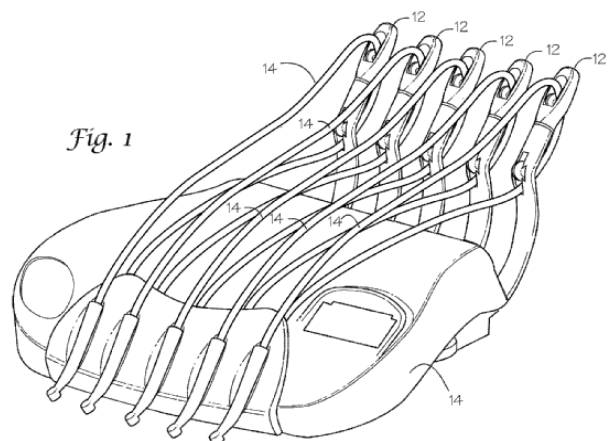
A61G 15/16

Storage, holding or carrying means for dental handpieces or the like

Definition statement

This place covers:

Example of a holder for dental workpieces: [EP2189143]



References

Informative references

Attention is drawn to the following places, which may be of interest for search:

Dental machines, pneumatic systems	A61C 1/0038
Storage means specially adapted for one specific hand apparatus	B25H 3/006

A61G 17/00

Coffins; Funeral wrappings; Funeral urns

Definition statement

This place covers:

Coffins and urns and directly connected accessories; Enclosings for corpses

References

Informative references

Attention is drawn to the following places, which may be of interest for search:

Preservation of bodies of humans or animals, or parts thereof	A01N 1/00
Destroying or transforming solid waste	B09B 3/00
Containers held erect by extensions of one or more sides being doubled-over	B65D 5/22
Monuments; Tombs; Burial vaults; Columbaria	E04H 13/00

A61G 17/032

{Support for closures (support for whole coffin [A61G 19/00](#))}

References

Limiting references

This place does not cover:

Support for whole coffin	A61G 19/00
--------------------------	----------------------------

Informative references

Attention is drawn to the following places, which may be of interest for search:

Support for corpses	A61G 17/044
---------------------	-----------------------------

A61G 17/08**Urns (columbaria [E04H 13/00](#))****References****Informative references***Attention is drawn to the following places, which may be of interest for search:*

Columbaria	E04H 13/00
------------	----------------------------

A61G 19/00**Hoisting or lowering devices for coffins****References****Informative references***Attention is drawn to the following places, which may be of interest for search:*

Devices for lifting patients or disabled persons, e.g. special adaptations of hoists thereto	A61G 7/10
Auxiliary devices for controlling movements of suspended loads, or preventing cable slack	B66C 13/04
Cranes comprising trolleys or crabs running on fixed or movable bridges or gantries for containers	B66C 19/007
Accessories for grave sites, e.g. liners, covers, vault lowering devices	E04H 13/001

A61G 21/00**Funeral aspects of hearses or like vehicles****References****Informative references***Attention is drawn to the following places, which may be of interest for search:*

Vehicles predominantly for transporting loads and modified to facilitate loading, consolidating the load, or unloading - the load supporting or containing element being readily removable - the load-transporting element being a container or similar	B60P 1/6418
Car bodies, fairings of sidecars, forecars or the like	B62K 27/04

A61G 99/00**Subject matter not provided for in other groups of this subclass****Definition statement***This place covers:*

Transport or accommodation for patients, operating tables or chairs, chairs for dentistry or funeral devices not provided for in other groups of this subclass