

# CPC Implementation at KIPO

**Lee Hyunseok**

19 February, 2019

CPC Sixth Annual meeting, Geneva



Korean Intellectual Property Office

# Agenda

- **Classification/Search**
- **Quality Assurance Process**
- **CPC Data Exchange**
- **CPC Training**



# Classification / Search

under the CPC system  
at KIPO



# Policy on Classification

## ◆ Classification

- Since January 2015
- Classification for newly filed applications (all fields)
- Matching of IPC automatically (CPC-IPC Concordance Table)



# Policy on Classification

- Examiners confirm CPCs assigned by PIPC
- IPC assigned automatically (CPC-IPC concordance table)

CPC	H01L51/0508				
	1 H01L21/4807   ▾	2 C23C14/355   ▾	3 F16J15/064   ▾	4 H01L2221/00   ▾	5 
	6   ▾	7   ▾	8   ▾	9   ▾	10 
IPC	H01L51/05				
	1 H01L21/48   ▾	2 C23C14/35   ▾	3 F16J15/06   ▾	4   ▾	5 
	6   ▾	7   ▾	8   ▾	9   ▾	10 

[> 확인](#)

# Policy on Classification

- ◆ **Classification of PCT applications using CPC since JUN 2016**
  - **First, assigning CPC to PCT applications**
  - **Second, matching with IPC (CPC-IPC Concordance Table)**
  
- ◆ **KR applications with the prior application (KR)**
  - **If results of CPC classification exist, KIPO follows them automatically without intellectual classification**



# CPC-IPC Integrated Searching System

- **KOMPASS** enables CPC-based patent search. (since July 1, 2017)
- The system gets even better as sub-classifications can also be searched.

## < Classification Search on KOMPASS >

The screenshot illustrates the 'Classification Search on KOMPASS' interface. It is divided into two panels by a blue arrow pointing from left to right, indicating a transition or update in the system.

**Left Panel (Old Interface):** Titled '검색항목' (Search Items). It features a table with two main categories: '분류관련' (Classification-related) and '번호관련' (Number-related). The '분류관련' section is highlighted with a red box and contains two items: 'CPC[CPC]' and 'IPC분류[IPC]'. The '번호관련' section contains seven items: '출원번호[AN]', '공개번호[OPN]', '공보번호[PN]', '등록번호[GN]', '우선권출원번호[RN]', and 'PCT출원번호[IAN]'. Each item has a search icon and a trash icon.

**Right Panel (New Interface):** Titled '검색항목' (Search Items). It features a table with one main category: '분류관련' (Classification-related). This section is highlighted with a red box and contains one item: '통합분류[CPC/IPC]'. Below this, there is a list of search options with radio buttons for 'AND' and 'OR' selection. The options are: 'IPC/CPC[CPC]', 'F-TERM[FT]', 'FI[FI]', 'IPC/CPC주분류[CPC\_M]', and 'IPC/CPC부분류[CPC\_S]'. Each option has a search icon and radio buttons for 'AND' and 'OR' selection.

Traditionally CPCs and IPCs should be searched separately; now the two search systems have been integrated into a single search tool, ensuring a more efficient CPC search.

# Status of backfile reclassification

- Roughly 2,900,000 backfiles were reclassified from 2014 to 2018, the reclassification of the entire backfiles was completed.

\* In case of backfiles with family docs (EP, US), KR has referred to the classification symbols of the family doc into KR docs.

- Achievement made 1 year faster than originally planned.

Year	2014	2015	2016	2017	2018
The number of documents	120,420	231,902	821,441	1,020,254	674,421



# Reclassification due to revisions

- The reclassification due to CPC revisions has been conducted every year from 2018.
- When CPC revisions come into force YYYY, classification symbols are temporarily reclassified by way of 'Default transfer', then they would be intellectually reclassified in YYYY+1.
  - \* The symbols would be given 'D'(for internal use) as 'source of classification data' values.



# Quality Assurance Process

## under the CPC system at KIPO



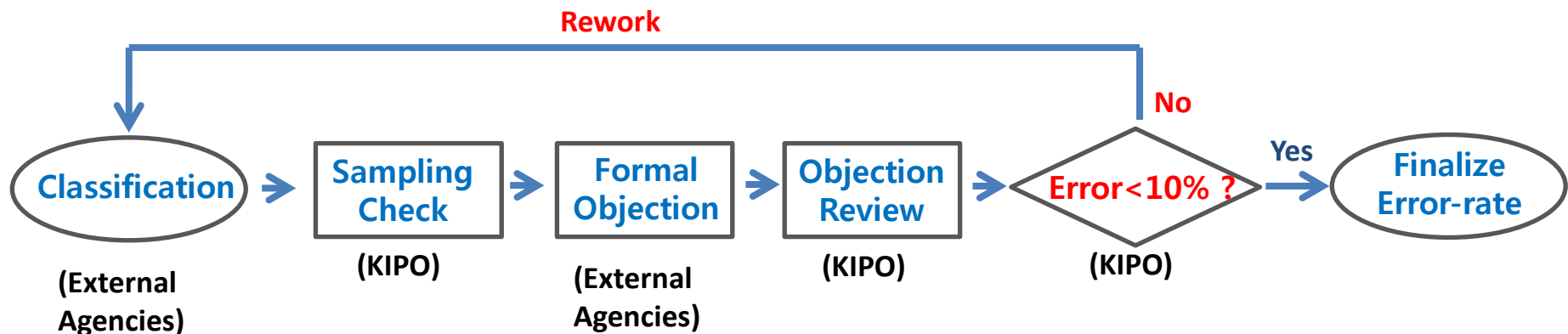
# Quality assurance processes

- **Documents under examination**

- ☞ Examiners can add/delete/amend classification symbols on the documents under their examination.

- **Backfile reclassified by external agencies**

- ☞ Classification results by each classifiers are sampled every month, and evaluated by the TF team of examiners.



# CPC Training

# CPC Training at EPO/USPTO

## In 2018

- CPC FST at EPO
  - 1<sup>st</sup> (EPO Munchen, April)
  - 2<sup>nd</sup> (EPO Hague, October)
- CPC FST at USPTO
  - 1<sup>st</sup> (USPTO Alexandria, November)

## In 2019

- CPC FST at EPO
  - 1<sup>st</sup> (EPO Munchen, April)
  - 2<sup>nd</sup> (EPO Hague, October)
- CPC FST at USPTO
  - To Be Determined

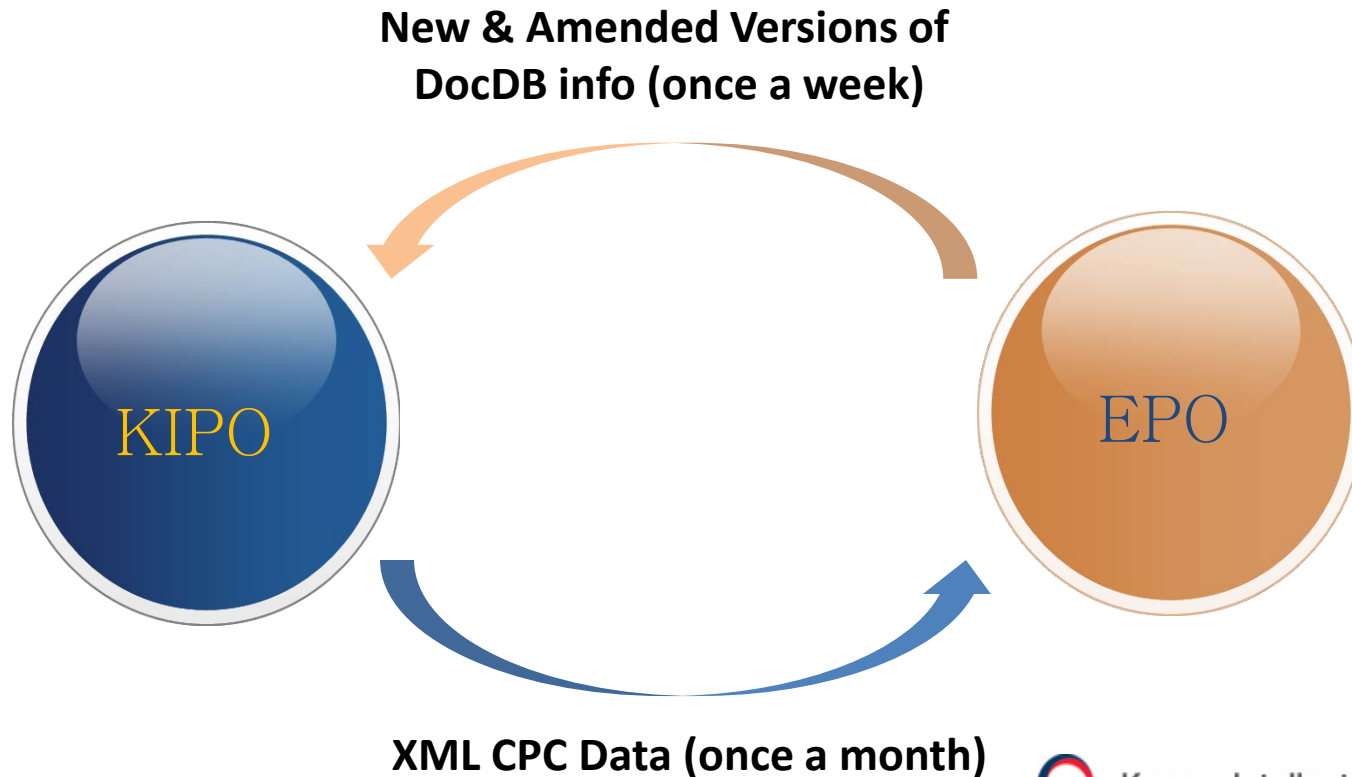


# CPC Data Exchange

with EPO

# CPC Data Exchange

- EPO sends regular reports on CPC data loading, and in return KIPO takes actions on identified errors.



# CPC Data Exchange

## ◆ Recent status

- '14.06 : MOU relating to CPC (KIPO-EPO Heads Meeting)
- '15.07 : 1<sup>st</sup> uploading (141,000 applications)  
~ '18.12 : 42<sup>th</sup> uploading (7,575 applications)

Year	2015	2016	2017	2018.12.
The number of documents	<b>177,184</b>	<b>385,086</b>	<b>1,378,030</b>	<b>1,723,071</b>





# Thank You



Korean Intellectual Property Office