

3rd EPO-USPTO CPC Annual Meeting with Industry users



USPTO, Alexandria, September 19, 2016

10/7/2016

Third CPC annual meeting at USPTO

1

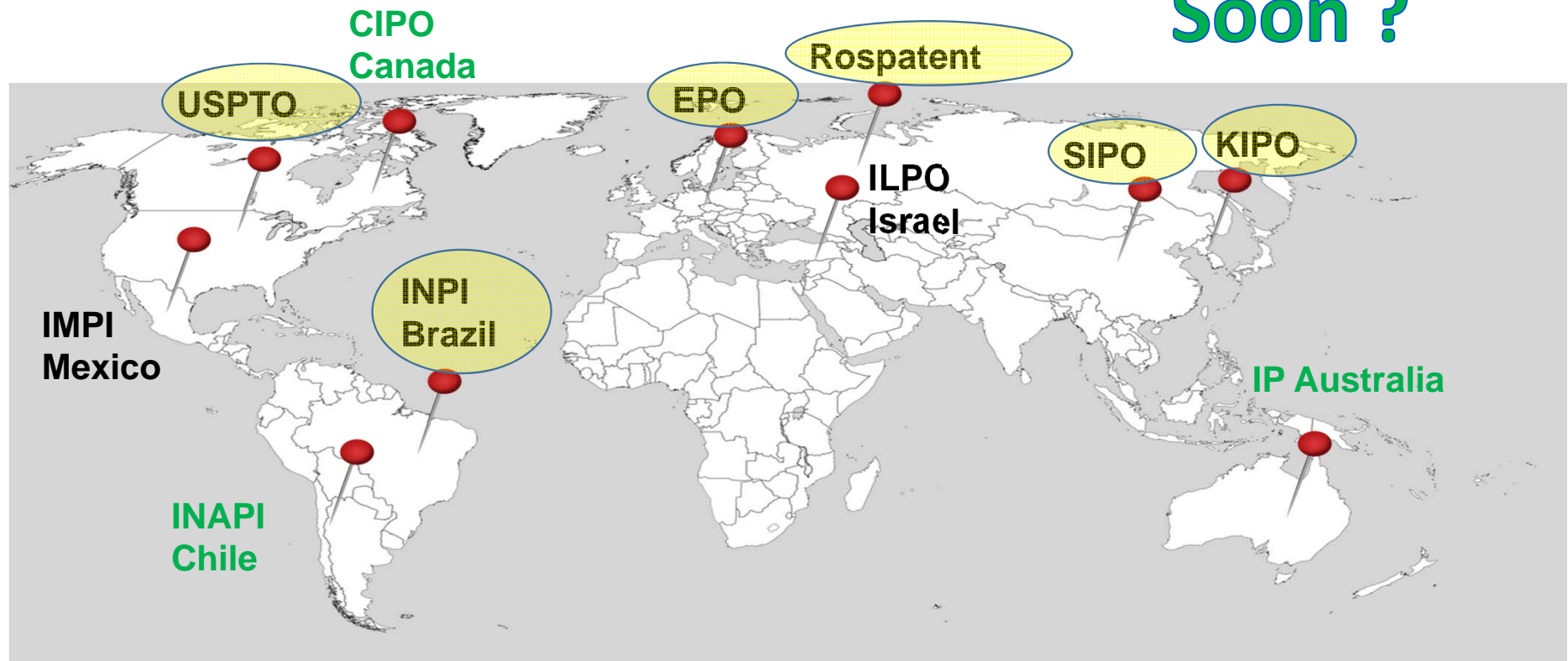
Agenda :

- CPC and National Offices
- CPC coverage – Much more than EP and US documents and update
- CPC products and support
- CPC scheme and Release
- Recent developments
- IT matters
- Future development
- CPC training
- CPC Quality measures
- Statistics analysis of CPC website: www.cpcinfo.org

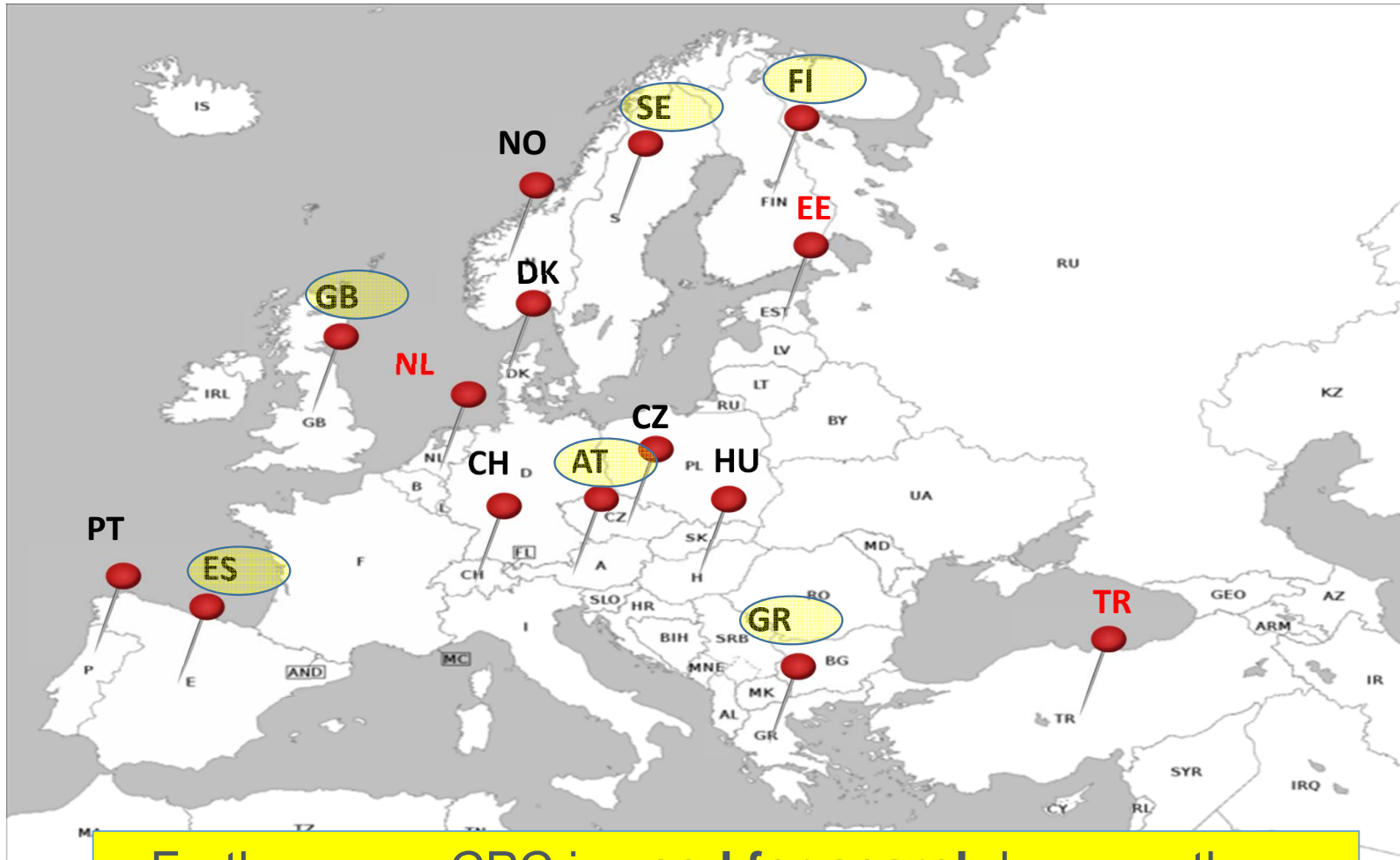
CPC and National Offices

Around the world

Soon ?



Within the European Patent Organisation



Furthermore, CPC is **used for search** by more than **45 Patent Offices** and by more than **25 000 examiners**

CPC Implementation at National Offices

- **Training** (Scheme & Definitions, E-learning modules*, CPC General training, CPC Advanced training, CPC Collective Training Events, Field-specific training, Field-specific videos, etc.)
- **Quality measures** (e.g. interaction with experts, feedback, automated comparison)
- **IT support**

* see new training **e-learning modules** by the EPO European Patent Academy on the cpcinfo.org website (January 2016):

[Using CPC in classification](#)

[Practical and strategic aspects of the CPC](#)

* new e-learning modules by the USPTO will be posted in the near future

CPC coverage – Much more than EP & US documents...

CPC-Classified Documentation

- **US, CH, DE, FR, GB, EP**
 - **AP** (ARIPO), **OA** (OAPI)
 - All **WO** (WIPO) – intellectually until end of 2015
 - **BE, NL, LU** (historical reasons)
 - **AT, AU, CA** (first filing residents)
-
- Selected Non-Patent Literature (**NPL**) in EPO-only collection, identified by **XP** numbers

CPC documentation coverage

Country	CC	Code	Systematically classified**	Non-systematically classified
ARIPO	AP		complete from 1 (3/7/1985)	
Austria	AT*	A,B	from 288 286 (15/1/1971)	from 100 022 (1925)
Australia	AU*	B,D	from 18/1/1973 (first filing: 1971)	from 1 019 332 (1933)
Belgium	BE		from 100 486 (1892)	years 1959-1962
Canada	CA*		from 848 159 (4/8/1970) for first filling residents from 939 101 (1/1/1974)	from 114 746 (1908)
Switzerland	CH	A,B D	from 208 320 (31/1/1939) from 1968	from 1 (1888)
Germany	DE	A,B,C U	from 1 (1877) from 6 609 798 (04/1/1973)	from 1 037 492 (1928)
EPO	EP	A	complete from 1 (20/12/1978)	
France	FR	A,B E	from 292 (1844) from 92 701 (20/12/1968)	
United Kingdom	GB	A,B	from 1909 02 488 (27/1/1910)	from 1817 04 136 (1817)
Luxembourg	LU		from 555 (<1920)	
The Netherlands	NL		from 28 (1913)	
OAPI	OA		complete from 1 (15/01/1966) complete from 1 (13/07/1836) complete from 8 (23/4/1839)	
The United States	US	A,B E I (defensive) I (trial, project) H	complete from 120 (04/10/1855) complete from 1 (03/12/1985)	
World(PCT)	WO		complete from 7800001 (19/10/1978)	

* for first filings only ie. without foreign priorities

** when the indication "complete" is not present, this means that some documents in the collection may not be classified in CPC

Update on CPC coverage

CPC Coverage :

(Updated on September 13, 2016)

Country	Country code	Number of documents (Source EPODOC on 13/09/2016)	Number of publications classified in CPC (family or document level)	% publications classified in CPC (family or document level)
EPO	EP	3,058,861	3,056,472	99.90%
United States	US	11,840,153	11,051,039	97.10%
Austria	AT	1,002,805	648,147	64.60%
Belgium	BE	585,582	551,566	94.20%
Switzerland	CH	714,853	575,717	80.50%
Germany	DE	5,517,441	4,714,221	85.40%
France	FR	2,409,869	2,389,311	99.10%
United Kingdom	GB	2,369,609	2,113,512	89.20%
Luxembourg	LU	61,712	60,683	98.30%
The Netherlands	NL	548,560	536,712	97.80%
ARIPO	AP	3,735	3,542	94.80%
Australia	AU	1,499,712	1,351,626	90.10%
Canada	CA	2,345,523	1,257,369	53.60%
OAPI	OA	13,432	13,190	98.20%
WIPO (PCT)	WO	2,913,269	2,906,543	99.80%

CPC Coverage (Cont.):

(Updated on September 13, 2016)

Country	Country code	Number of documents (Source EPODOC on 13/09/2016)	Number of publications classified in CPC (family or document level)	% publications classified in CPC (family or document level)
Brazil	BR	591,933	367,955	62.20%
Chile	CL	13,213	9,666	73.20%
China	CN	11,461,569	2,256,082	19.70%
Czech Republic	CZ	89,185	42,602	47.80%
Denmark	DK	392,710	255,976	65.20%
Spain	ES	1,080,760	621,930	57.50%
Finland	FI	193,584	111,911	57.80%
Greece	GR	99,422	52,639	52.90%
Hungary	HU	116,158	71,449	61.50%
India	IN	81,628	45,949	56.30%
Israel	IL	95,299	81,554	85.60%
Japan	JP	17,420,012	4,481,619	25.70%
Korea	KR	3,170,584	1,164,562	36.70%
Mexico	MX	259,892	235,478	90.60%
Norway	NO	200,661	171,231	85.30%
Russian Fed.	RU/SU	2,168,867	300,640	13.90%
Sweden	SE	518,660	330,085	63.60%

CPCNO data delivered by National Offices

(Update on September 13, 2016)

Country	Country code	Number of publications with CPCNO symbols (document level)
Austria	AT	5,596
Brazil	BR	6,786
China	CN	286,123
Spain	ES	30,720
Finland	FI	4,575
Great Britain	GB	122,701
Greece	GR	5,204
Korea	KR	261,336
Russia	RU	5,748
Sweden	SE	139,168

Plan of delivery of CPC Data from KIPO

Year	Backfile documents to be classified in CPC	Frontfile applications to be classified in CPC
2015	232,000	All
2016	457,000	All
2017	390,000	All
2018	390,000	All
From 2019	N/A	All

more than 1.000.000 KR documents are already classified in CPC
 KIPO will classify in CPC the last 10 years of backfile by 2018 (~1.3M docs)

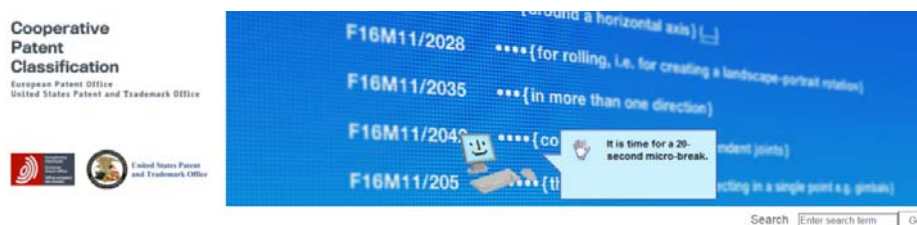
CPC classification work at SIPO

	Year	Backfile documents to be classified in CPC	Frontfile applications (to be) classified in CPC
STATUS	2014	89 000	0
	2015	385 000	155 820
PLAN	2016	-	1 100 000
	2017	Depending on the availability of resources	All

CPC products and support

CPC Scheme and Definitions

- <http://www.cooperativepatentclassification.org/index.html>



CPC scheme and CPC definitions

This page is regularly updated. Please check the following page for [the latest release notes](#).

Only the CPC scheme and definitions published on this page are the official versions. The scheme and definitions are only published in English language. The USPTO and EPO cannot be held responsible for the content of translated versions that could be made available by third parties.

CPC scheme and CPC definitions

A		B		C		D		E		F		G		H		Y
Scheme	Def	Scheme	Def	Scheme	Def	Scheme	Def	Scheme	Def	Scheme	Def	Scheme	Def	Scheme	Def	Scheme
A	A	B	B	C	C	D	D	E	E	F	F	G	G	H	H	Y
A01B	A01B	B01B	B01B	C01B	C01B	D01B	D01B	E01B	E01B	F01B	F01B	G01B	G01B	H01B	H01B	Y02B
A01C	A01C	B01D	B01D	C01C	C01C	D01C	D01C	E01C	E01C	F01C	F01C	G01C	G01C	H01C	H01C	Y02C
A01D	A01D	B01F	B01F	C01D	C01D	D01D	D01D	E01D	E01D	F01D	F01D	G01D	G01D	H01D	H01D	Y02E
A01F	A01F	B01J	B01J	C01F	C01F	D01F	D01F	E01F	E01F	F01K	F01K	G01F	G01F	H01G	H01G	Y02T
A01G	A01G	B01L	B01L	C01G	C01G	D01G	D01G	E01H	E01H	F01L	F01L	G01G	G01G	H01H	H01H	Y04S

- worldwide.espacenet.com/classification
- www.uspto.gov/web/patents/classification/index.html

- **CPC Scheme - 260 000 symbols (PDF, XML)**
 - organised per section, from A to H and Y, and subdivided at subclass level
 - 1 PDF file per subclass
 - all XML files compressed together in a ZIP file
 - previous versions stored in “Archive” area
- **CPC definitions (PDF, XML)**
 - 626 CPC Definitions (one per subclass)
 - 1 PDF file per subclass
 - all XML files compressed together in a ZIP file
 - Normally no CPC Definitions for indexing subclasses
 - CPC Definitions are adapted when revising the corresponding part of the CPC Scheme

CPC Concordances

- www.cpcinfo.org
- **CPC → IPC (“CICL”)**
(dynamic, adapted after each CPC or IPC revision)
- **CPC ↔ ECLA**
(static table, not updated after CPC revisions)
- In **TXT** and **XML** format

Guide to the CPC

- Available on www.cpcinfo.org since 20 March 2015 under **Publications**

Publications

In this section, information material is available

Guide to the CPC:

- [Guide to the CPC \(20 March 2015\)](#)

Guide to the CPC (Cooperative Patent Classification)

Document owner	EPO and USPTO
Office Contacts	EPO Directorate Classification and USPTO Classification Standards and Development Division
Approved on	
Document ID	Version 1.0
Revision number	2.00

- Revised version of the Guide available soon

CPC Scheme and releases

CPC Revisions

- **CPC Revisions** Projects (RP), **Maintenance** projects (MP) and **Definition** projects (DP) are bilaterally discussed in the CPC e-forum (CEF)
- CPC-NO offices have been granted **read access to the CEF** and can submit input or feedback via the email addresses:
 - cpc@uspto.gov
 - cpc@epo.org
- **Notices of Changes (NoCs)** are published one month before entry into force
 - published in the www.cpcinfo.org site
 - section Revisions, Notices of Changes
 - NoC title linked to RP number and subclass
- About 300 NoCs published so far

CPC Revisions (cont'd)

- RP priorities are set by the Joint Board (JB), e.g.
 - NoC 44 =RP0015 B33Y Additive manufacturing
 - NoC 143=RP0229 Y02P Climate change mitigation technologies
- IPC2016.01 and IPC2017.01 projects are being introduced into CPC

CPC-IPC alignment

CPC-IPC alignment is given **high priority** in the CPC revision process

- EPO & USPTO international obligations *vis-à-vis* the IPC
 - Publications must carry IPC symbols in force (Strasbourg Agreement)
 - “IPC reclassification” is actually a “CPC reclassification” at the EPO & USPTO
- CPC-to-IPC-concordance-list (CICL) needs prompt updates
 - CICL is used by offices to classify only in CPC and then roll-up to IPC
- Reduce (where possible) the “deviations” from the former IPC versions

CPC-IPC alignment (Cont.)

- The CPC-IPC alignment can be pursued in **two ways**:
 - introduce IPC entries into CPC
 - promote CPC schemes into IPC (IP5 route)
- **Example1: IPC subclass A61P missing in CPC**
 - on USPTO initiative, A61P will be introduced into CPC
 - project RP0329
 - CPC A61P will be added, thereby eliminating one “deviation”
- **Example2: IPC main group H04N 15/00 missing in CPC**
 - on KIPO initiative, CPC schemes for “Stereoscopic and 3D TV systems” will be brought into IPC (project F044)
 - IPC H04N 15/00 will be removed, thereby eliminating one “deviation”

CPC-IPC alignment (Cont.)

Missing IPC	Section A	Section B	Section C	Section D	Section E	Section F	Section G	Section H	Totals
Subclasses	2	0	0	0	0	0	0	0	2
Main Groups	25	43	53	1	6	25	12	15	180
Subgroups	250	397	715	43	167	120	124	393	2209

- After introducing A61P into CPC, only 1 IPC subclass will be missing: A01P
- Note that many main groups missing are just “residual ones” (99/00)
- It will be investigated how to further reduce the “deviations” at main group level, and then at subgroup level

CPC Scheme Releases

2013

- April 2013
- July 2013
- September 2013
- November 2013
- December 2013

2014

- February 2014
- June 2014
- July 2014
- September 2014
- October 2014
- November 2014

2015

- January 2015
- April 2015
- May 2015
- July 2015
- September 2015
- October 2015
- November 2015
- December 2015

2016

- January 2016
- February 2016
- May 2016
- **August 2016**
- **November 2016**

CPC releases from 2016 onwards

- Four times per year
(+ one if needed)
 - announced on www.cpcinfo.org
- CPC scheme release dates for 2016:
 - January
 - February
 - May
 - August
 - November

CPC releases (Cont.)

- **Pre-release of the CPC scheme** one month before the entry into force of a new version, on cpcinfo.org
 - **Pre-release on first Tuesday** of the month preceding new version
 - **New version** of the CPC scheme **enters into force** on the **first day of the month**
- For example,
 - pre-release on 2 June 2015
 - entry into force 1 July 2015

Advance information?

www.cpcinfo.org

- Short summary of the ongoing CPC revision projects:
<http://www.cooperativepatentclassification.org/CPCRevisions/Projects.html>

Latest news

About CPC

Objectives

CPC Scheme and Definitions

CPC Revisions

Notice of Changes

Projects

Pre-release

CPC Concordances

CPC Training

Impact

Events

Publications

Ongoing CPC Projects

The CPC areas currently undergoing maintenance (MP) or revision (RP) are listed in the table below together with the corresponding project number. Once finalized, the outcome of these projects will be summarized in a Notice of Change to be published one to two months before the corresponding changes are implemented in the CPC Scheme.

Project number	Status	CPC	Title
RP0023	Active	A01H1/00-1/08;5/00-5/12	Flowering Plants
RP0025	Active	B64D	Equipment for fitting in or to aircraft
RP0027	Active	B64D	Equipment for fitting in or to aircraft

More detailed information?

- **CPC Notices of Changes (NoC) (PDF)**
 - documents detailing the changes made to the scheme following a CPC Scheme revision as well as their impact
 - available one to two months prior to the entry into force of a new version of the CPC Scheme

Home

Latest news

About CPC

Objectives

CPC Scheme and Definitions

CPC Revisions

Notice of Changes

Projects

Pre-release

CPC Concordances

CPC Training

F16M11/205



Notice of Changes

CPC 2015.04:

- [CPC Notice of Changes 65-RP0022 \(B60N\)](#)
- [CPC Notice of Changes 66-RP0031 \(B65H\)](#)
- [CPC Notice of Changes 67-RP0036 \(F24D\)](#)
- [CPC Notice of Changes 68-RP0047 \(B81C\)](#)
- [CPC Notice of Changes 69-RP0049 \(A61F\)](#)

CPC Scheme layout (CPC 2015.12)

Section A-H	Section Y
<p><u>Main Trunk</u></p> <p>About 162,000 symbols</p>	<ul style="list-style-type: none"> • Tagging of emerging cross-sectional technologies <ul style="list-style-type: none"> - Y02B - Y04S - Y02C - Y02E - Y02T - Y02W - Y02P
<p><u>2000 series</u></p> <p>About 80,500 symbols</p>	<ul style="list-style-type: none"> • United State Patent Classification (USPC) related <ul style="list-style-type: none"> - Y10S - Y10T <p>About 17,600 symbols</p>

About 260,000 entries in total in CPC system

New CPC Scheme related services

Statistical mapping CPC to FI

<http://www.epo.org/searching-for-patents/helpful-resources/first-time-here/classification/cpc/cpc-fi.html>

Based on statistical analysis of allocations on documents

CPC	FI-1	FI-2	FI-3
<u>G01B1/00</u> (53)	G01B1/00 (11, 21%)		
<u>G01B11/00</u> (497)	G01B11/00,A (77, 15%)	G01B11/00,H (77, 15%)	G01B11/00,C (66, 13%)
<u>G01B11/002</u> (281)	G01B11/00,H (61, 22%)	G01B11/00,A (56, 20%)	
<u>G01B11/005</u> (64)	G01B11/24,A (11, 17%)	G01B11/00,A (9, 14%)	G01B11/00,G (9, 14%)
<u>G01B11/007</u> (62)	G01B21/00,P (18, 29%)	G01B11/00,A (17, 27%)	G01B5/012 (16, 26%)
<u>G01B11/02</u> (345)	G01B11/02,Z (131, 38%)		
<u>G01B11/022</u> (131)	G01B11/00,H (22, 17%)	G01B11/02,H (16, 12%)	G01B11/24,K (16, 12%)

Statistical mapping FI to CPC

<http://www.epo.org/searching-for-patents/helpful-resources/first-time-here/classification/cpc/fi-cpc.html>

Based on statistical analysis of allocations on family members

FI	CPC-1	CPC-2	CPC-3
G01B11/00 (29)	G01B11/00 (11, 38%)		
G01B11/00	G01B11/00		
G01B11/00&G (911)	<u>G03F9/7049</u> (127, 14%);	<u>G03F7/70775</u> (123, 14%);	<u>G01D5/38</u> (103, 11%)
G01B11/00&H (1890)	<u>G01B11/00</u> (77, 4%);	<u>G06T7/0075</u> (67, 4%);	<u>G06T7/0042</u> (67, 4%)
G01B11/00&Z (578)	<u>G01B11/00</u> (63, 11%)		
G01B11/02 (26)	<u>G01B11/02</u> (5, 19%);	<u>G01B11/024</u> (4, 15%)	
G01B11/02&G (107)	<u>G01B11/02</u> (12, 11%);	<u>G01N21/4788</u> (12, 11%);	<u>G03F7/70625</u> (12, 11%)
G01B11/02&H (368)	<u>G01B11/024</u> (25, 7%);	<u>G01B11/24</u> (23, 6%);	<u>G01B11/0608</u> (22, 6%)

Recent developments

CPC scheme – Y section

General tagging of new technological developments; general tagging of **cross-cutting technologies** spanning over several sections of the IPC

- **Y02**: Climate change mitigation technologies (CCMTs)
 - **Y02B** for Buildings
 - **Y02C** for Carbon Capture technologies
 - **Y02E** for Energy production and storage
 - **Y02T** for Transport
 - **Y02W** for Waste Water treatment/management
 - **Y02P** for Processes for energy-intensive industries (e.g. cement, metallurgy) (November 2015)
- **Y04**: Smart grids
 - **Y04S** for Power Network operation, communication or information technologies

CPC scheme – Y section (Continue)

- Technical subjects covered by former USPC cross-reference art collections [**XRACs**] and **Digests and** technical subjects from selected USPC
 - **Y10S** for Apparel
 - **Y10T** for Miscellaneous hardware, Metal working, Machine elements, cutting, single crystals, fluid handling, etc.
- Primary classification in main CPC area. Secondary (ADD) classification by USPTO only in these areas
- Y10T scheme available since January 2015

C-Sets from National Offices in Espacenet (<http://worldwide.espacenet.com>)

Classification:	- international: C09J201/00; C09J5/00; C09J7/02; H01L21/301
- cooperative default:	C09J7/0207; H01L21/6836; H01L21/78; H01L24/27; H01L24/29; H01L24/83; C09J2201/36; C09J2203/326; H01L21/67132; H01L2221/68318; H01L2221/68327; H01L2221/68336; H01L2221/68359; H01L2224/27436; H01L2224/2919
CPCNO:	C09J7/0207; H01L21/6836; H01L21/78; H01L24/27; H01L24/29; H01L24/83; C09J2201/36; C09J2203/326; H01L21/67132; H01L2221/68318; H01L2221/68327; H01L2221/68336; H01L2221/68359; H01L2224/27436; H01L2224/2919
C-sets:	- H01L2224/2919, H01L2924/0665, H01L2924/00, - H01L2924/0665, H01L2924/00, - H01L2924/0132, H01L2924/01031, H01L2924/01033, H01L2224/73265, H01L2224/32225, H01L2224/48227, H01L2924/00012, H01L2924/15311, H01L2224/73265 %2, H01L2224/32225 %2, H01L2224/48227 %2, H01L2924/00, - H01L2224/92247, H01L2224/73265, - H01L2224/32225, H01L2224/48227, H01L2924/00, - H01L2924/3512, H01L2924/00

Past:

- only C-Sets from EPO/USPTO were displayed
- C-Sets not searchable

Since 15 March 2016:

- Also C-sets from CPCNO Offices are **displayed** ...
- ... and **searchable** in “Smart search” by using “cpcC”

Espacenet: free access to the database of over 90 million patents

Smart search: 

Siemens EP 2007

cpcc=C08F8/30 AND cpcc=C08F297/02

[Clear](#)

[Search](#)

Intellectual Classification of WO publications in CPC by the EPO

- Since January 2016, **WO** documents in languages other than EPO official languages, e.g. in **Japanese, Korean, Chinese or Russian**, are not intellectually classified in CPC by the EPO anymore
 - IPC allocations provided by National Office are mapped to CPC symbols
 - Intellectual classification by the EPO still takes place for applications searched by the EPO, i.e. where family members are available in **English, German, French or Dutch**

IT matters

OPS RESTful web services (classification)

These provide access to the EPO's raw data via a standardised XML interface.

The webservices focussing on classification relate to:

- CPC Search
- CPC Media retrieval
- CPC Retrieval

[OPS - RESTFul](#)

CPC schema changes

- **Schema changes** for the CPC scheme and definitions in November 2016 !!!

Impacted areas:

- References in Definitions
 - Enhanced references in Scheme and Definitions
 - Change in Synonyms and Keywords
-
- Details were made available on www.cpcinfo.org in May 2016, to be effective as of the **November 2016** CPC release

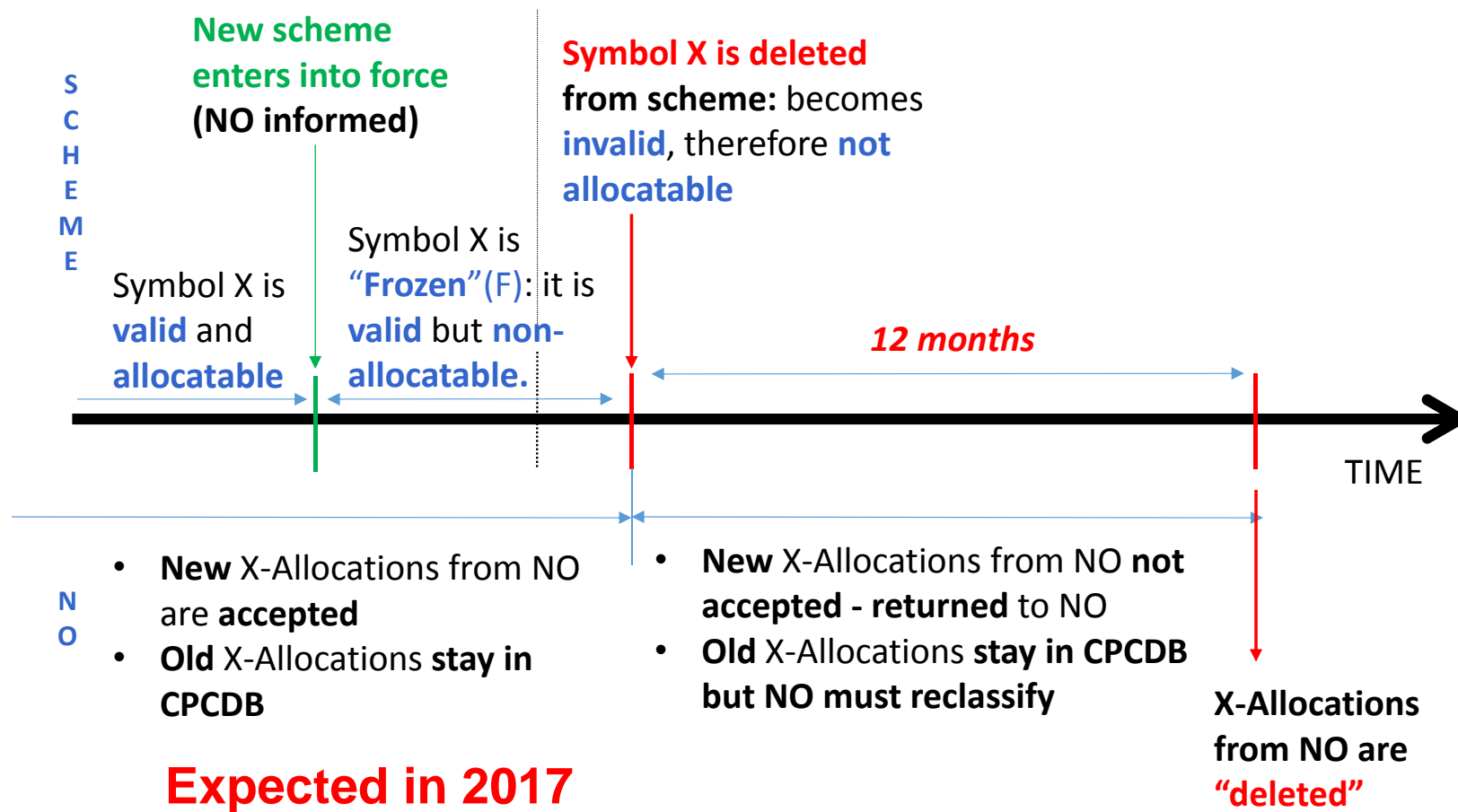
Future developments

Expiration of outdated CPCNO allocations

Expiration of outdated CPCNO allocations

Situation: following a CPC revision, symbol X is to be deleted from the CPC scheme

EPO/USPTO reclassification completed



Expiration of outdated CPC allocations (cont'd)

- There are many CPC scheme revisions
- Classification needs to be made using the **CPC version in force at the time of classification**
- What to do with **outdated CPCNO allocations?**
- **An Invalid CPCNO allocation WILL be deleted from CPCDB 12 months from the date a symbol is deleted from the scheme**

Future developments

A new approach for CPCNO data (CPC-INT project)

CPC-INT: current picture

document level
(CPCNO)

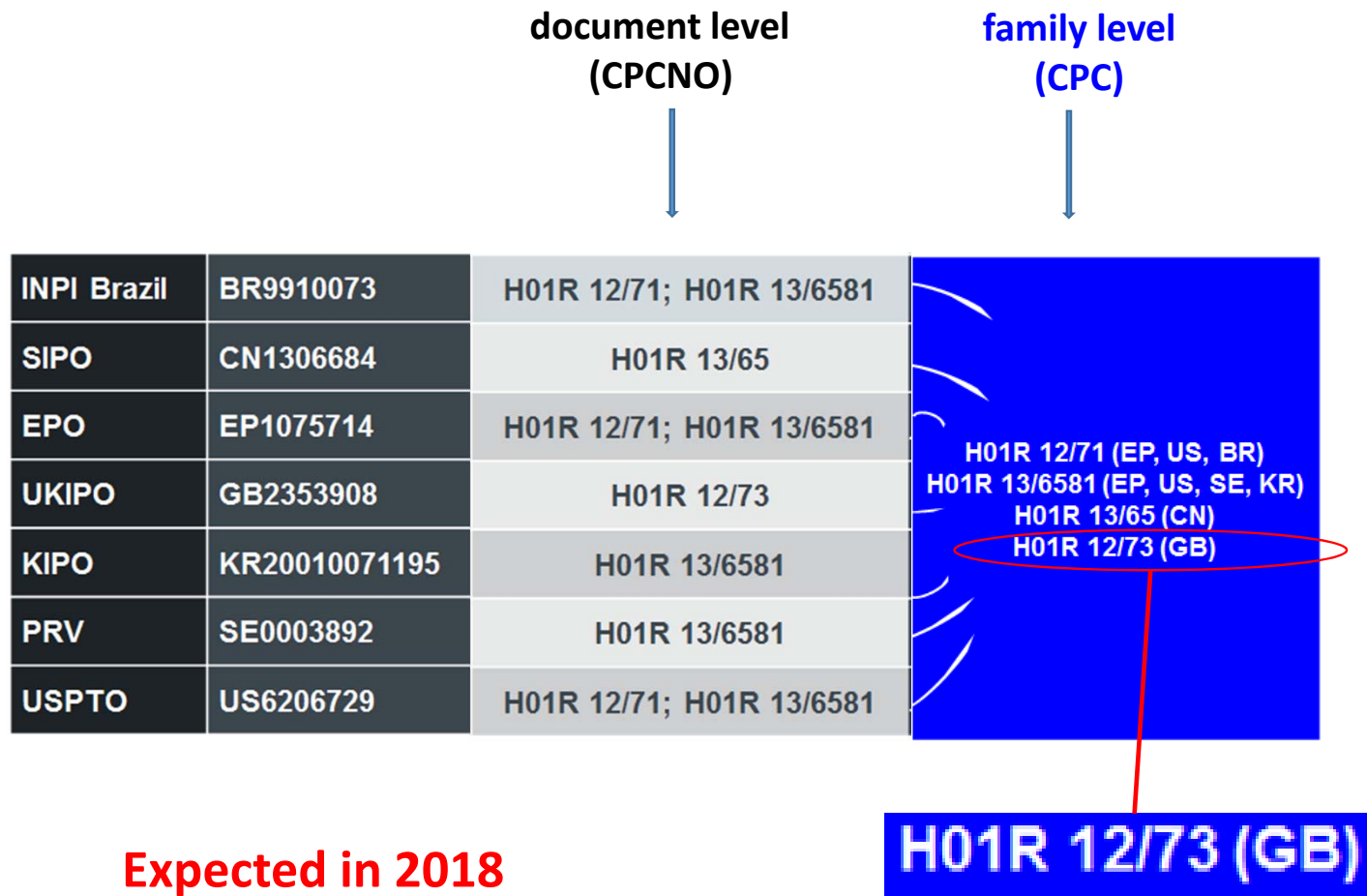


family level
(CPC)



INPI Brazil	BR9910073	H01R 12/71; H01R 13/6581	
SIPO	CN1306684	H01R 13/65	
EPO	EP1075714	H01R 12/71; H01R 13/6581	
UKIPO	GB2353908	H01R 12/73	
KIPO	KR20010071195	H01R 13/6581	
PRV	SE0003892	H01R 13/6581	
USPTO	US6206729	H01R 12/71; H01R 13/6581	

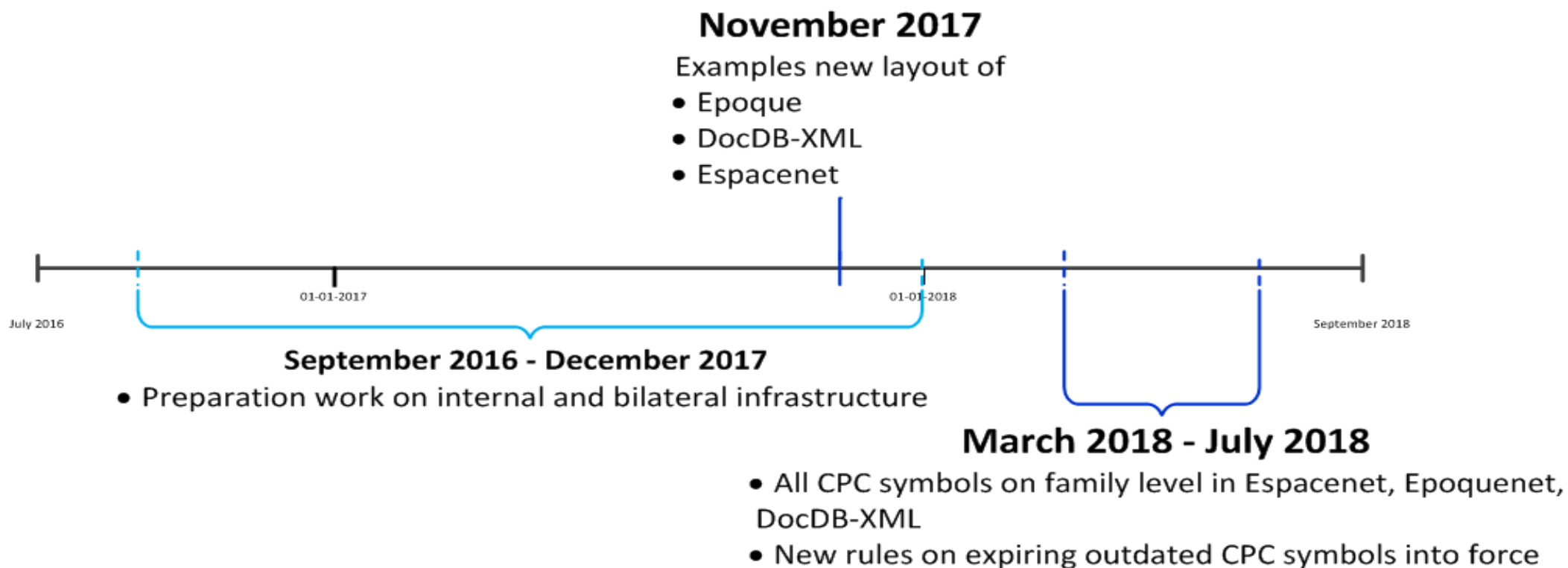
CPC-INT: future picture



CPC-INT: work in progress

- ❖ Requirements for the display of CPC allocations in Epoque and Espacenet are currently collected from the user community
- ❖ All internal and external systems that are requiring adoptions are evaluated in view of the planning
- ❖ New bilateral infrastructure between USPTO and EPO to support the equal level of all CPC allocations is in preparation – National Offices to connect

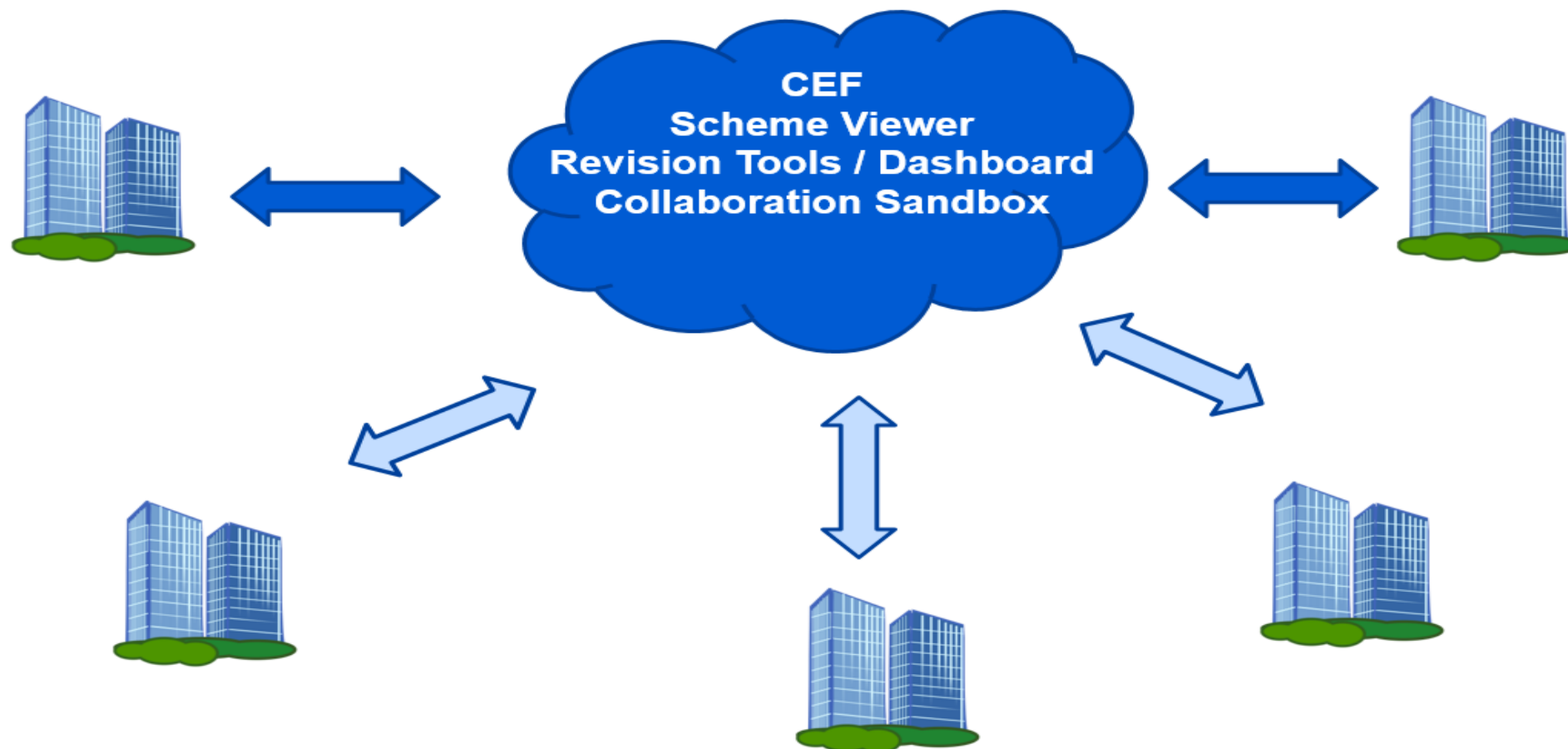
CPC-INT roadmap



Future developments

New Collaborative Environment

Future Collaborative Environment



Future developments

Machine readable products

CPC Products after CPC revisions

Products will be delivered in a **machine-readable** format,
e.g. XML (available on www.cpcinfo.org)

- RCL (Revision Concordance List)
- CICL (CPC-to-IPC Concordance List)
- Validity File

→ **Expected in January 2017**

- CRL (Cross-Reference List)
- Compilation of changes

→ For later ...

CPC Training

CPC Training by USPTO

- Bilateral consultation
 - Examiner(s)/Classifier(s) focused workshop / training environment
 - training material
 - timeline for the training
 - Specific feedback - contact USPTO Classification team (CQIC – Classification Quality and International Coordination Division)

CPC Training by USPTO (Con.)

- Customize unique technical expert training for each office
(at USPTO or National Office location)
 - General training
 - Master level training
 - Advanced training in specific technical field
 - Field-Specific Training (FST) on CPC Scheme/Definitions
(<http://ptoweb.uspto.gov/patents/cpc/fst.html>)
 - Computer Based Training (CBT) e-learning modules
(http://www.uspto.gov/patents/resources/classification/CPC_Training.jsp)

CPC Training in 2016 (USPTO)

- **CPC General and/or Advanced Training Event for National Offices:**

☐ KIPO – March 2016

☐ KIPO – November 2016

☐ ISRAEL – July 2016

☐ CHILE – (TBD)

CPC training provided by EPO

- **CPC scheme + Notes + Warnings + Definitions**
- New training **e-learning modules** by the EPO European Patent Academy on the cpcinfo.org website (January 2016):
 - [Using CPC in classification](#)
 - [Practical and strategical aspects of the CPC](#)
- **Field-specific training (FST) videos**
 - For training patent examiners at patent offices classifying into CPC

Overview of CPC Training provided by EPO

- **CPC General Training** (at National Office location):
- **CPC Advanced Training** (three broad areas: Chemistry, Mechanics, Electricity/Physics, at National Office location)
 - ✓ SIPO
 - ✓ INPI Brazil
 - ✓ Rospatent
 - ✓ IMPI Mexico
 - ✓ IP Australia
- **CPC Field-Specific Training** in selected technical fields according to bilateral agreement with each National Office
 - ✓ SIPO, KIPO, INPI Brazil and Rospatent

CPC Training in 2016 (EPO)

- New training **e-learning modules** by the EPO European Patent Academy on the cpcinfo.org website (January 2016):
 - [Using CPC in classification](#)
 - [Practical and strategical aspects of the CPC](#)
- **CPC General and Advanced Training Event** for National Offices (EPO member states and non member states) applying CPC (EPO The Hague, 1-2 June 2016)
- **Field-specific Training** for a limited number of National Offices (according to **bilateral agreements**) on EPO premises

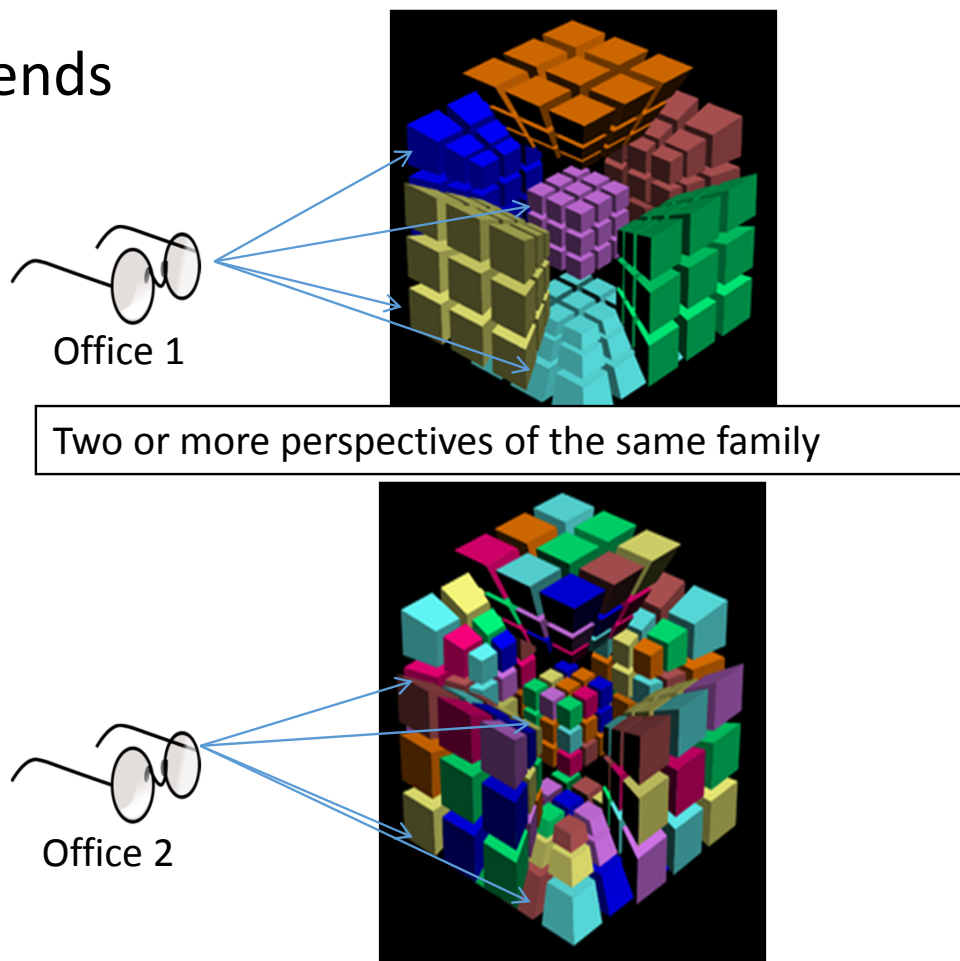
CPC Quality Measures

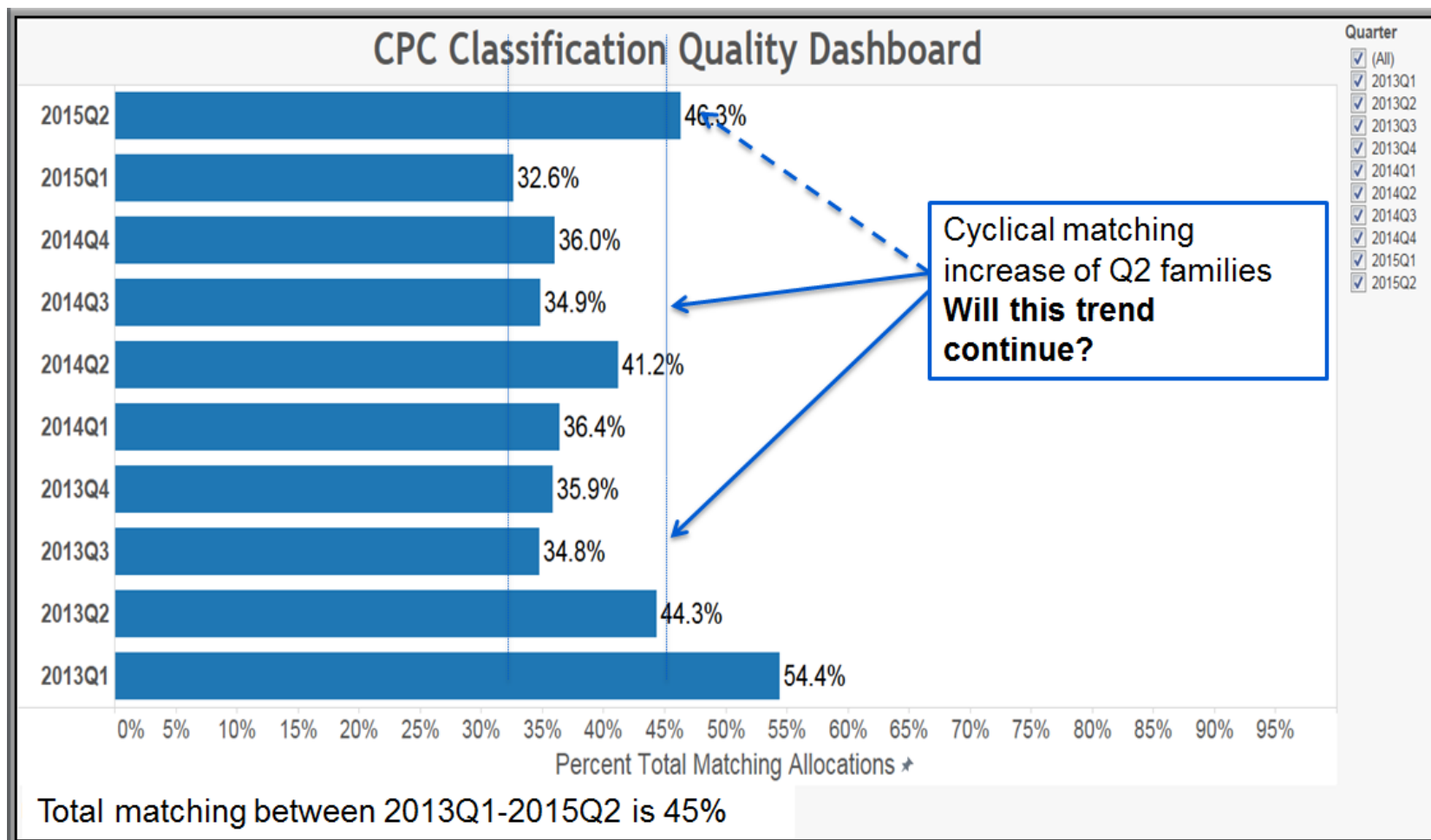
CPC Objective Quality Metrics tool – USPTO

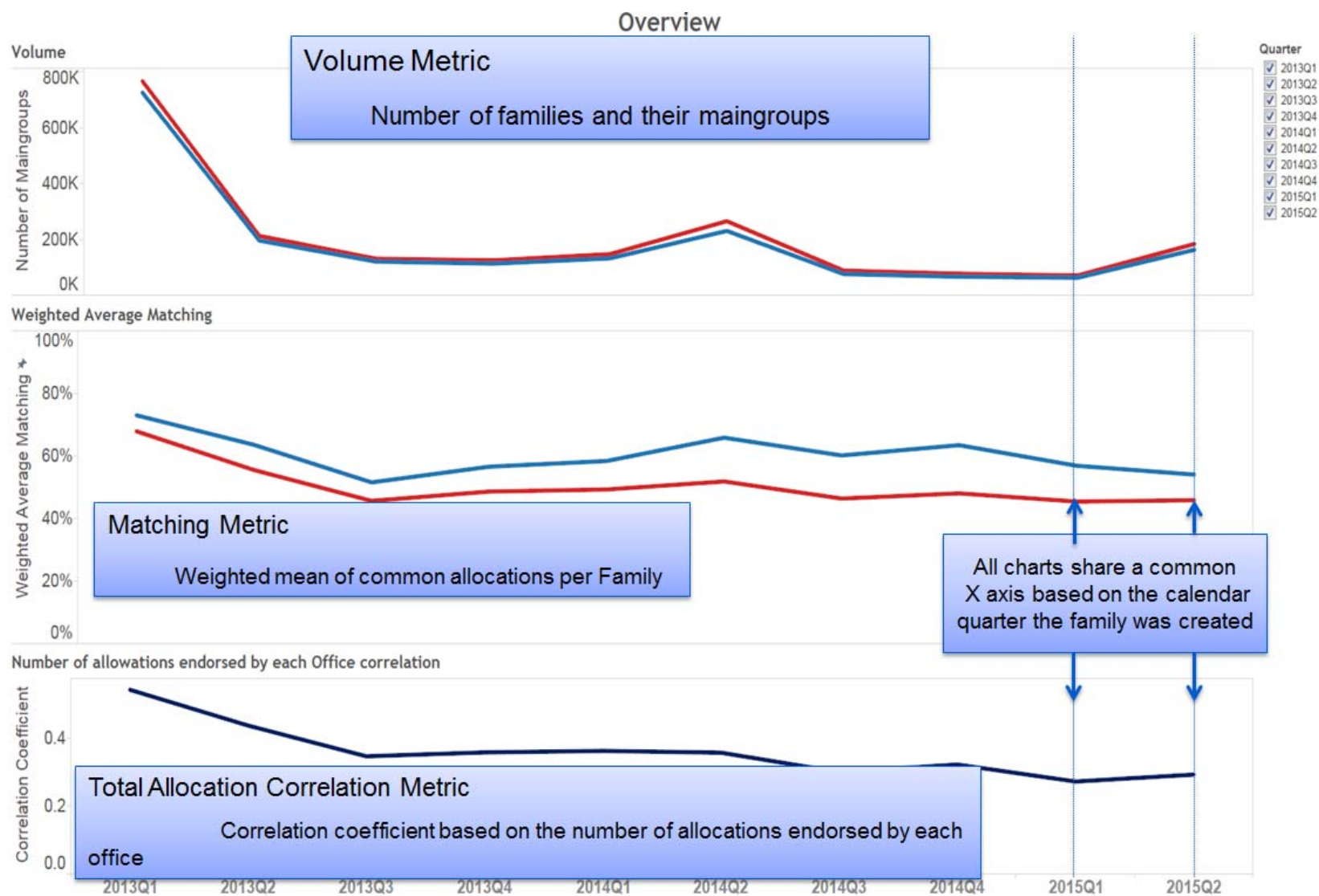
Purpose:

Identify classification trends
between Offices

- Convergence
- Divergence
- Under-classification
- Over-Classification

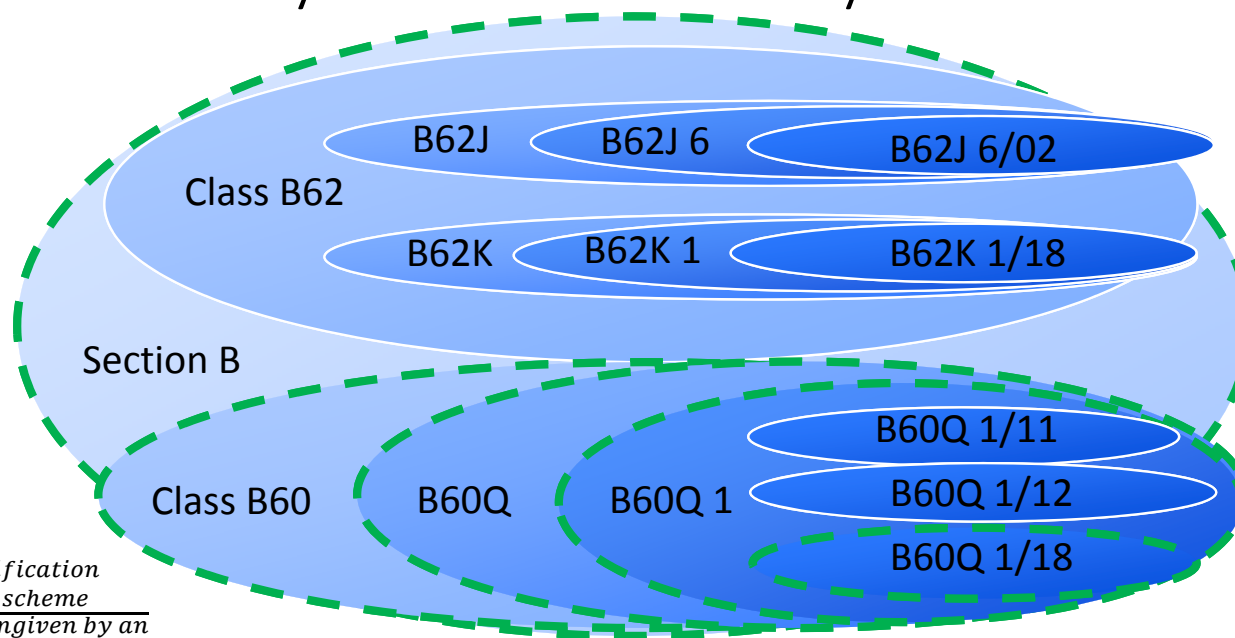




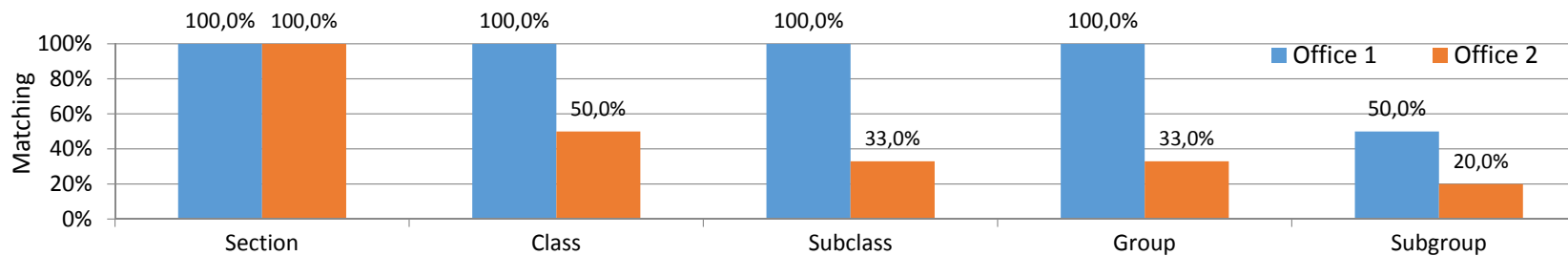


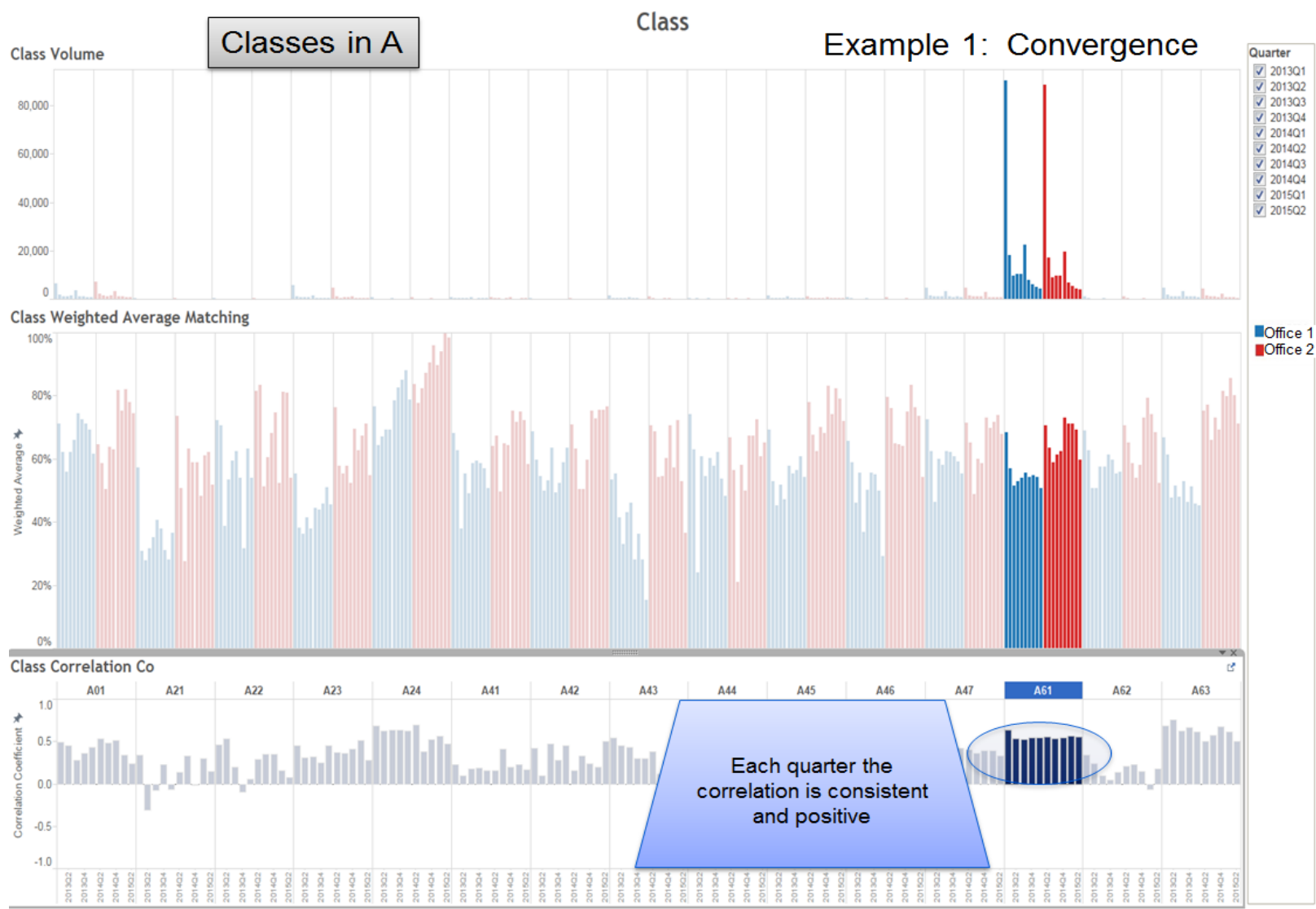
Matching Inventive Symbols for a Family

Office 1	Office 2
B60Q 1/11	B60Q 1/12
B60Q 1/18	B60Q 1/18
	B62J 6/02
	B62K 1/18



$$\text{Matching} = \frac{\text{Common classification at a depth of scheme}}{\text{Total classification given by an entity at said depth of scheme}}$$

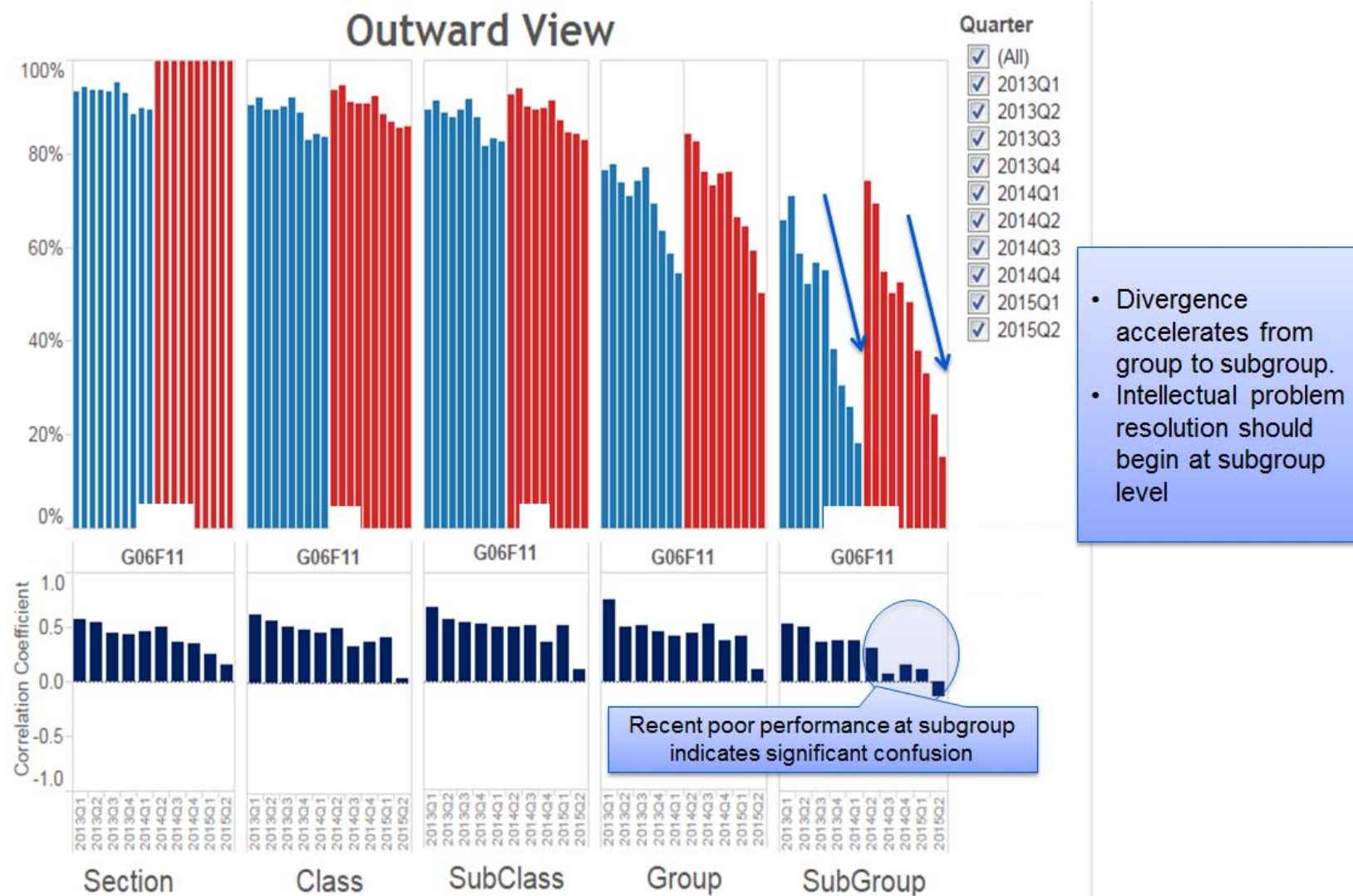




10/7/2016

Third CPC annual meeting at USPTO





EPO Quality Measures

CPC Field-Specific Training “Follow-ups”

- Classification of family members by National Office
 - Checks by the EPO technical experts
 - Feedback sent to the National Office
- **Promote interaction**, e.g. via e-mail or telephone

CPC Quality Assurance for National Offices: Automated Comparison of Documents' Classification (ACDC)

- **Objective method to compare the allocations** provided by two Offices (OF1 and OF2), **to members of the same patent family.**
- OF1 allocations and OF2 allocations on families are compared
- All families which have an earliest family member published in a particular month and which has at least one OF1 allocation and at least one OF2 allocation, are compared.
- The symbols allocated are **sorted per technical field** (according to an established list) and the calculations are performed only per technical field, ignoring the other symbols of other fields.

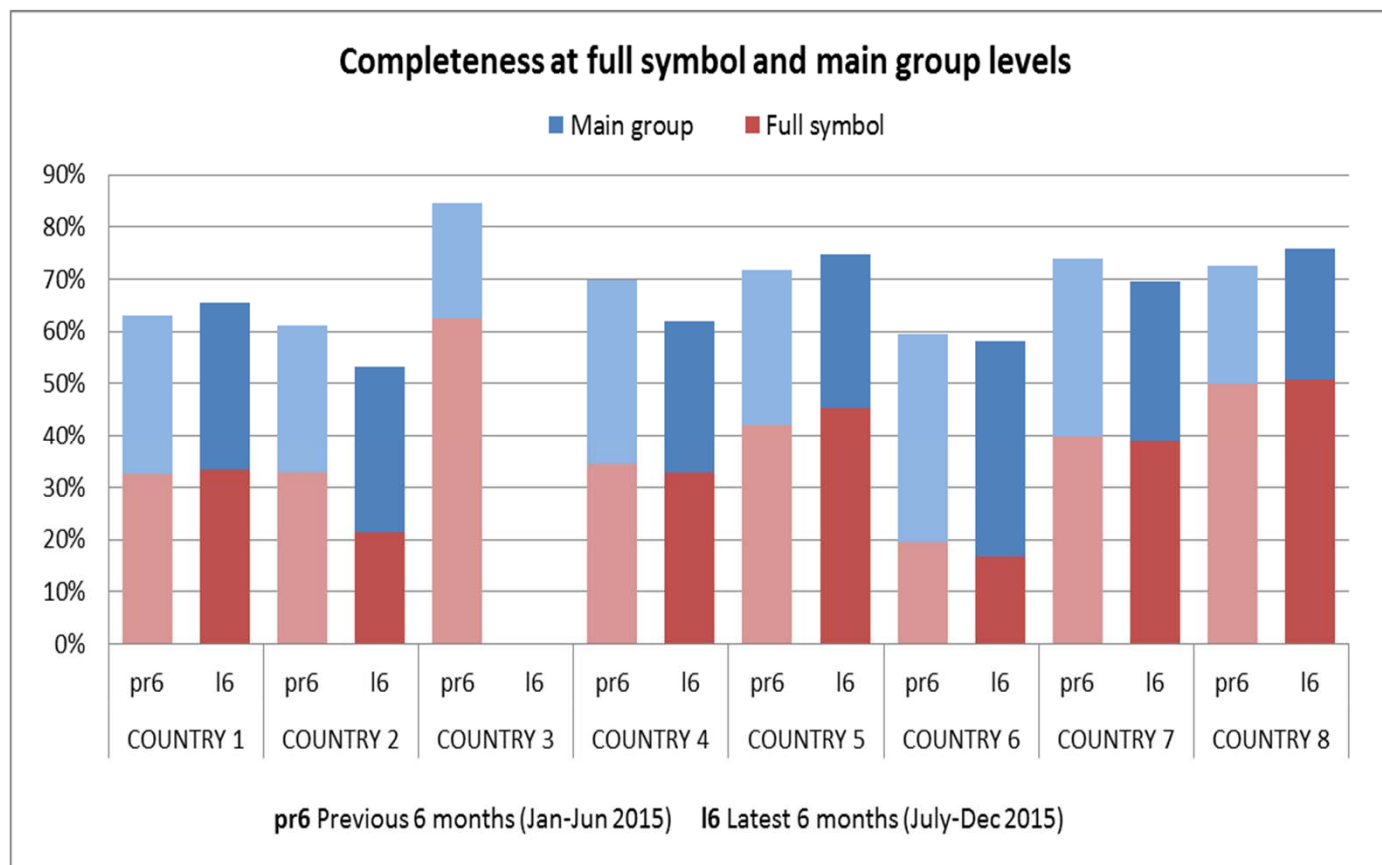
Parameters

- The parameters measured are the number of shared allocations per family (allocated by OF1 and OF2), divided by either the total number of OF1 allocations or the number of OF2 allocations.
- Looking at the situation from the **viewpoint of OF1**:
 - The number of shared allocations divided by the allocations given by OF1 is a parameter for **completeness**
 - The number of shared allocations divided by the allocations given by OF2 is a parameter for **correctness**
- Looking at it from the **viewpoint of OF2** it would be the other way around
- Parameters are measured at **different levels**: Main Group, Subgroup, 2000 series, etc.

Example

- A patent family with **document A classified by OF1** and **document B classified by OF2**
- Document A (OF1): 5 allocations
F21K9/00, H01L23/3675, H01L25/167, H05B33/0803, H05K1/0203
- Document B (OF2): 4 allocations
F21K9/00, H01L23/3675, H01L25/167, H05K1/02
- Shared: 3 allocations
- Looking from side of OF1 (OF1 is the benchmark):
 - completeness = 60% (3 out of 5)
 - correctness = 75% (3 out of 4)
- Looking from side of OF2 (OF2 is the benchmark):
 - completeness = 75% (3 out of 4)
 - correctness = 60% (3 out of 5)

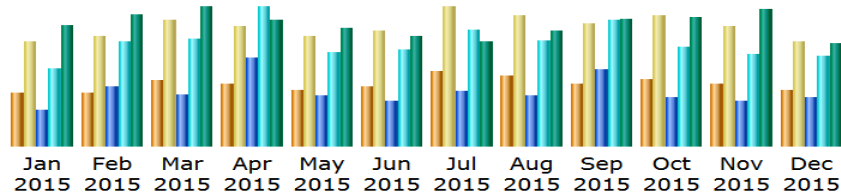
Example of Quality Report for National Offices



Statistics on the usage of the www.cpcinfo.org

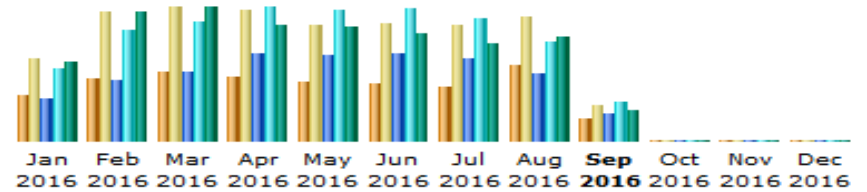
Monthly history – 2015 vs. 2016 (1/2)

Monthly history



Month	Unique visitors	Number of visits	Pages	Hits	Bandwidth
Jan 2015	11418	22643	67205	143497	38.73 GB
Feb 2015	11629	24064	109214	189951	41.98 GB
Mar 2015	14083	27207	95053	196218	44.39 GB
Apr 2015	13397	26036	161462	254442	40.35 GB
May 2015	12352	24080	91297	172263	37.71 GB
Jun 2015	12779	24837	84715	176190	35.38 GB
Jul 2015	16209	30108	101562	213090	33.50 GB
Aug 2015	15189	28170	91202	192409	36.62 GB
Sep 2015	13554	26622	140573	230482	40.83 GB
Oct 2015	14455	28242	88134	181119	41.17 GB
Nov 2015	13430	25829	82196	166837	43.81 GB
Dec 2015	12094	22688	89678	166652	32.87 GB
Total	160589	310526	1202291	2283150	467.34 GB

Monthly history



Month	Unique visitors	Number of visits	Pages	Hits	Bandwidth
Jan 2016	9753	17282	82510	140819	26.10 GB
Feb 2016	13300	27072	120782	214582	41.81 GB
Mar 2016	14602	28131	135936	232499	43.60 GB
Apr 2016	13725	27308	172835	260859	37.73 GB
May 2016	12417	24274	167850	257381	36.94 GB
Jun 2016	11949	24857	171510	259470	35.05 GB
Jul 2016	11562	24619	161787	239024	31.62 GB
Aug 2016	16170	26169	130836	193684	33.97 GB
Sep 2016	4977	7749	52571	76879	9.83 GB
Oct 2016	0	0	0	0	0
Nov 2016	0	0	0	0	0
Dec 2016	0	0	0	0	0
Total	108455	207461	1196617	1875197	296.66 GB

Monthly history (2/2)

- Number of unique visitors stable
- Slight decrease of the bandwidth usage from 40 GB to about 35 GB per month

Top 10 URLs 2015 vs. 2016

2016

Pages-URL (Top 10) - Full list - Entry - Exit					
1756 different pages-url	Viewed	Average size	Entry	Exit	
/cpcSchemeAndDefinitions.html	13214	16.48 KB	139	103	
/cpcSchemeAndDefinitions/Bulk.html	12905	5.30 KB	140	113	
/	4655	3.14 KB	2778	2274	
/index/rss-latest-news.xml	3111	8.77 KB	654	662	
/cpcSchemeAndDefinitions/table.html	1236	67.31 KB	427	273	
/cpc/definition/F/definition-F22G.pdf	410	607 Bytes	16	16	
/about.html	346	5.33 KB	40	52	
/cpcConcordances.html	334	6.19 KB	85	93	
/CPCRevisions/NoticeOfChanges.html	316	30.18 KB	173	169	
/search.html	307	5.48 KB	35	34	
Others	15737	609.13 KB	3262	3940	

2015

Pages-URL (Top 10) - Full list - Entry - Exit					
4049 different pages-url	Viewed	Average size	Entry	Exit	
/	178930	3.45 KB	92864	68470	
/index/rss-latest-news.xml	78605	9.37 KB	20081	20175	
/cpcSchemeAndDefinitions/table.html	52443	72.59 KB	14847	8378	
/cpc/interleaved/CPCSchemePDF201504.zip	50369	170.31 KB	9181	9302	
/cpc/interleaved/CPCSchemePDF201412.zip	41114	93.88 KB	4493	4548	
/cpcSchemeAndDefinitions/Bulk.html	33522	5.15 KB	6740	6429	
/cpc/definition/B/definition-B28D.pdf	33085	14.59 KB	9	7	
/cpcSchemeAndDefinitions.html	29811	13.32 KB	4195	4297	
/cpc/scheme/A/scheme-A63D.pdf	17877	10.90 KB	16	16	
/cpc/definition/A/definition-A47B.pdf	16484	634.84 KB	2464	2493	

Connections from

Connect to site from					
Origin		Pages	Percent	Hits	Percent
Direct address / Bookmarks		387263	84.2 %	407416	84.7 %
Links from a NewsGroup					
Links from an Internet Search Engine - Full list		49300	10.7 %	49332	10.2 %
- Google	47422 47454				
- Unknown search engines	715 715				
- Yahoo!	301 301				
- Baidu	296 296				
- Ask	238 238				
- Yandex	176 176				
- Sogou	105 105				
- My Search	36 36				
- Rambler	3 3				
- MyWebSearch	2 2				
- Others	6 6				
Links from an external page (other web sites except search engines) - Full list		23321	5 %	23829	4.9 %
- http://worldwide.espacenet.com/classification	9722 9722				
- http://www.uspto.gov/patents-application-process/patent-search/c...	2299 2299				
- http://worldwide.espacenet.com/searchResults	1445 1445				
- http://worldwide.espacenet.com/publicationDetails/biblio	878 878				
- http://www.uspto.gov/help/patent-help	832 832				
- http://ptoweb.uspto.gov/patents/cpc/tools.html	476 476				
- http://www.bing.com/search	362 362				
- http://www.uspto.gov	341 341				
- http://intranet.aipo.gov.au/workbenches/ppbrg_staff_workbench/pa...	281 281				
- http://worldwide.espacenet.com/5_8_23_4/javascript/cpcbrower.co...	220 220				
- Others	6465 6973				
Unknown Origin		14	0 %	14	0 %

Visits duration

Visits duration		
Number of visits: 7749 - Average: 298 s		
	Number of visits	Percent
0s-30s	6026	77.7 %
30s-2mn	453	5.8 %
2mn-5mn	234	3 %
5mn-15mn	269	3.4 %
15mn-30mn	200	2.5 %
30mn-1h	295	3.8 %
1h+	252	3.2 %
Unknown	20	0.2 %

Average duration per visit is 298s in 2016 (was 310s in 2015)

Annual report (1/2)

Reported period: - Year - ▼ 2016 ▼ OK

[Back to main page](#)

Filter : publications	Exclude filter :	OK			
Pages-URL					
Filter publications: 82 different pages-url					
	Viewed	Average size	Entry	Exit	
/publications.html	5702	6.26 KB	344	989	
/publications/GuideToTheCPC.pdf	1773	262.08 KB	823	919	
/publications/CpcCSETS.pdf	669	194.47 KB	344	344	
/publications/Presentation.html	117	7.11 KB	30	31	
/publications/2014CPCAnnualReport.pdf	403	1.93 MB	140	254	
/publications/Miscellaneous.html	362	5.01 KB	14	62	
/publications/AnnualReports.html	347	3.45 KB	68	23	
/publications/CpcEpoqueNet.pdf	343	290.32 KB	184	173	
/publications/CpcOnUSPTO.pdf	341	261.64 KB	234	221	
/publications/CPCupdateAnnualMeeting2016industry.pdf	330	2.03 MB	58	129	
/publications/UsptoUserDayGeneralIntro.pdf	315	502.23 KB	116	125	
/publications/CpcSchemeAndDefinitions.pdf	251	267.45 KB	80	86	
/publications/WorkshopMarchVienna.pdf	216	7.17 KB	100	37	
/publications/AnnualReports/CpcAnnualReport2015.pdf	245	2.16 MB	35	96	
/publications/CpcSubclasses200series.pdf	317	2.58 MB	105	148	
Reported period: - Year - 2015 OK					

[Back to main page](#)

Filter : publications	Exclude filter :	OK			
Pages-URL					
Filter publications: 90 different pages-url					
	Viewed	Average size	Entry	Exit	
/publications.html	8048	7.62 KB	477	1481	
/publications/GuideToTheCPC.pdf	3722	141.35 KB	825	1082	
/publications/CpcCSETS.pdf	1173	211.08 KB	491	549	
/publications/CpcOnUSPTO.pdf	1102	265.69 KB	873	850	
/publications/UsptoUserDayGeneralIntro.pdf	681	478.75 KB	284	279	
/publications/WorkshopMarchVienna.pdf	571	765.09 KB	251	150	
/publications/CpcEpoqueNet.pdf	537	263.94 KB	272	258	
/publications/CombiSetsListofFields.pdf	535	6.10 KB	72	154	
/publications/SchemaChangesNotificationApril2015.pdf	517	99.22 KB	89	138	
/publications/CpcSchemeAndDefinitions.pdf	506	297.34 KB	145	194	
/publications/CpcNewsOct13.pdf	412	1.33 MB	241	228	
/publications/CpcCoverageNovember13.pdf	367	436.31 KB	113	143	
/publications/SchemaAndSampleFilesApril2015.zip	357	261.75 KB	26	80	
/publications/CpcNewsOct2012.pdf	356	731.01 KB	182	226	
/publications/2014CPCAnnualReport.pdf	334	2.58 MB	105	148	
/publications/CPCSubclasses200series.pdf	310	88.04 KB	23	31	

Annual report (2/2)

- Annual report 2014 was viewed 737 times (334 in 2015, 403 in 2016)
- Annual report 2015 was viewed 245 times so far

Thank you for your attention!

www.cpcinfo.org

cpc@uspto.gov

cpc@epo.org