

EUROPEAN PATENT OFFICE
U.S. PATENT AND TRADEMARK OFFICE

CPC NOTICE OF CHANGES 663

DATE: MAY 1, 2019

PROJECT RP0373

The following classification changes will be effected by this Notice of Changes:

<u>Action</u>	<u>Subclass</u>	<u>Group(s)</u>
SCHEME:		
Symbols Deleted:	F02B	37/127, 2037/162
Symbols New:	F02B	37/162
Titles Changed:	F02B	SUBCLASS
	F02B	37/16, 37/168
Notes Deleted:	F02B	33/00
DEFINITIONS:		
Definitions New:	F02B	37/162, 37/168
Definitions Modified:	F02B	SUBCLASS
		37/00, 37/16

No other subclasses/groups are impacted by this Notice of Changes.

This Notice of Changes includes the following [Check the ones included]:

1. CLASSIFICATION SCHEME CHANGES

- A. New, Modified or Deleted Group(s)
- B. New, Modified or Deleted Warning(s)
- C. New, Modified or Deleted Note(s)
- D. New, Modified or Deleted Guidance Heading(s)

2. DEFINITIONS

- A. New or Modified Definitions (Full definition template)
- B. Modified or Deleted Definitions (Definitions Quick Fix)

3. REVISION CONCORDANCE LIST (RCL)

4. CHANGES TO THE CPC-TO-IPC CONCORDANCE LIST (CICL)

5. CHANGES TO THE CROSS-REFERENCE LIST (CRL)

CPC NOTICE OF CHANGES 663

DATE: MAY 1, 2019

PROJECT RP0373

1. CLASSIFICATION SCHEME CHANGES

A. New, Modified or Deleted Group(s)

SUBCLASS F02B - INTERNAL-COMBUSTION PISTON ENGINES; COMBUSTION ENGINES IN GENERAL (plants in which engines use combustion products F02C , F02G ; internal-combustion turbines F02C)

<u>Type*</u>	<u>Symbol</u>	<u>Indent Level Number of dots (e.g. 0, 1, 2)</u>	<u>Title</u> <u>“CPC only” text should normally be enclosed in {curly brackets}**</u>	<u>Transferred to#</u>
M	F02B	Subclass	INTERNAL-COMBUSTION PISTON ENGINES; COMBUSTION ENGINES IN GENERAL (cyclically operating valves therefor F01L; lubricating internal-combustion engines F01M; gas-flow silencers or exhaust apparatus therefor F01N; cooling of internal-combustion engines F01P; internal-combustion turbines F02C; plants in which engines use combustion products F02C, F02G)	
U	F02B 2037/125	2	{Control for avoiding pump stall or surge}	
D	F02B37/127	2	{by bypassing air from the pump inlet, e.g. to the pump outlet (bypassing charging air F02B37/16; valves for admission of atmospheric air to engine F02B 33/446)}	<administrative transfer to F02B37/162>
M	F02B37/16	2	by bypassing charging air	
D	F02B2037/162	3	{by bypassing, e.g. partially, intake air from pump inlet to pump outlet}	<administrative transfer to F02B37/162 INV>
N	F02B37/162	3	{by bypassing, e.g. partially, intake air from pump inlet to pump outlet}	
M	F02B37/168	3	{into the exhaust conduit (F02B37/166 takes precedence)}	

*N = new entries where reclassification into entries is involved; C = entries with modified file scope where reclassification of documents from the entries is involved; Q = new entries which are firstly populated with documents via administrative transfers from deleted (D) entries. Afterwards, the transferred documents into the Q entry will either stay or be moved to more appropriate entries, as determined by intellectual reclassification; T= existing entries with enlarged file scope, which receive documents from C or D entries, e.g. when a limiting reference is removed from the entry title; M = entries with no change to the file scope (no reclassification); D = deleted entries; F = frozen entries will be deleted once reclassification of documents from the entries is completed; U = entries that are unchanged.

NOTES:

- **No {curly brackets} are used for titles in CPC only subclasses, e.g. C12Y, A23Y; 2000 series symbol titles of groups found at the end of schemes (orthogonal codes); or the Y section titles. The {curly brackets} are used for 2000 series symbol titles found interspersed throughout the main trunk schemes (breakdown codes).

CPC NOTICE OF CHANGES 663

DATE: MAY 1, 2019

PROJECT RP0373

- U groups: it is obligatory to display the required “anchor” symbol (U group), i.e. the entry immediately preceding a new group or an array of new groups to be created (in case new groups are not clearly subgroups of C-type groups). Always include the symbol, indent level and title of the U group in the table above.
- All entry types should be included in the scheme changes table above for better understanding of the overall scheme change picture. Symbol, indent level, and title are required for all types .
- “Transferred to” column must be completed for all C, D, F, and Q type entries. F groups will be deleted once reclassification is completed.
- When multiple symbols are included in the “Transferred to” column, avoid using ranges of symbols in order to be as precise as possible.
- For administrative transfer of documents, the following text should be used: “< administrative transfer to XX>”, “<administrative transfer to XX and YY simultaneously>”, or “<administrative transfer to XX, YY, ...and ZZ simultaneously>” when administrative transfer of the same documents is to more than one place.
- Administrative transfer to main trunk groups is assumed to be the source allocation type, unless otherwise indicated.
- Administrative transfer to 2000/Y series groups is assumed to be “additional information”.
- If needed, instructions for allocation type should be indicated within the angle brackets using the abbreviations “ADD” or “INV”: <administrative transfer to XX ADD> , <administrative transfer to XX INV>, or < administrative transfer to XX ADD, YY INV, ... and ZZ ADD simultaneously>.
- In certain situations, the “D” entries of 2000-series or Y-series groups may not require a destination (“Transferred to”) symbol, however it is required to specify “<no transfer>” in the “Transferred to” column for such cases.
- For finalisation projects, the deleted “F” symbols should have <no transfer> in the “Transferred to” column.
- For more details about the types of scheme change, see CPC Guide.

CPC NOTICE OF CHANGES 663

DATE: MAY 1, 2019

PROJECT RP0373

B. New, Modified or Deleted Note(s)

SUBCLASS F02B - INTERNAL-COMBUSTION PISTON ENGINES; COMBUSTION ENGINES IN GENERAL (plants in which engines use combustion products F02C , F02G ; internal-combustion turbines F02C)

<u>Type*</u>	<u>Location</u>	<u>Old Note</u>	<u>New/Modified Note</u>
D	F02B33/00	- in this group the following indexing code is used F02M2700/33	

*N = new note, M = modified note, D = deleted note

NOTE: The "Location" column only requires the symbol PRIOR to the location of the note. No further directions such as "before" or "after" are required.

2. A. DEFINITIONS (modified)

F02B37/16

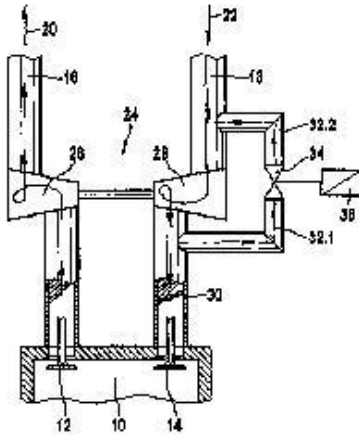
by bypassing charging air

Definition statement

ADD: The following image and text to the Definition statement:

This place covers:

Illustrative example of subject matter classified in [F02B37/16](#)



DELETE: References section and Limiting references table.

DELETE: Special rules of classification section and all associated text and images

DATE: MAY 1, 2019

PROJECT RP0373

2. A. DEFINITIONS (new)

F02B37/162

{by bypassing, e.g. partially, intake air from pump inlet to pump outlet}

Definition statement

This place covers:

Control of pumps by bypassing air from the pump inlet to the pump outlet.

References

Informative references

Attention is drawn to the following places, which may be of interest for search:

Valves for admission of atmospheric air to engine	F02B33/446
---	----------------------------

F02B37/168

{into the exhaust conduit (F02B37/166 takes precedence)}

Definition statement

This place covers:

Control of pumps by bypassing charging air into the exhaust conduit.

CPC NOTICE OF CHANGES 663

DATE: MAY 1, 2019

PROJECT RP0373

References

Limiting references

This place does not cover:

The bypassed air being used in a combustion chamber	F02B37/166
---	----------------------------

CPC NOTICE OF CHANGES 663

DATE: MAY 1, 2019

PROJECT RP0373

2. B. DEFINITIONS QUICK FIX

<u>Symbol</u>	<u>Location of change</u> (e.g., section title)	<u>Existing reference symbol or text</u>	<u>Action; New symbol; New text</u>
F02B	Limiting references	Rotary-piston or oscillating-piston type F01C Non-positive-displacement type F01D	Delete all
F02B	Informative references		Add: Rotary-piston or oscillating-piston type F01C Non-positive-displacement type F01D Exhaust Apparatus F01N Cooling of Engines F01P Gas-turbine plants F02C Use of waste-heat of combustion engines F02G
F02B37/00	Limiting references	Turbocompound F02B41/10 Turbocharger casings, arrangement of bearings in turbochargers, cooling or lubrication of turbochargers per se F01D25/00 Details or constructional aspects of turbines F01D Arrangements of such pumps or other auxiliary apparatus on engines F02B 67/00 Turbochargers F02C Constructional aspects of bypass valves in turbochargers F02C , F01D 17/105 Combined engine and pump control, control dependent on variables other than those generic to pump F02D Pumps F04 Valves in general F16K	Delete
F02B37/00	Informative references		Add: Turbo-compound F02B41/10 Turbocharger casings, arrangement of bearings in turbochargers, cooling or lubrication of turbochargers per se F01D25/00 Details or constructional aspects of non-positive displacement machines or engines, e.g. turbines, F01D Arrangements of such pumps or other auxiliary apparatus on engines F02B 67/00 Turbochargers per se F02C

CPC NOTICE OF CHANGES 663

DATE: MAY 1, 2019

PROJECT RP0373

			Final actuators for bypassing part of the fluid in non-positive displacement machines or engines F01D 17/105 Combined engine and pump control, control dependent on variables other than those generic to pump F02D Constructional aspects of pumps F04C Controls of pumps F04D15/00 Valves in general F16K
--	--	--	--

NOTES:

- The table above is used for corrections or modifications to existing definitions, e.g. delete an entire definition or part thereof; propose new wording or modify wording of a section, change the symbol the definition is associated with, change or delete a reference symbol, etc.
- Do not delete (F) symbol definitions.

CPC NOTICE OF CHANGES 663

DATE: MAY 1, 2019

PROJECT RP0373

3. REVISION CONCORDANCE LIST (RCL)

<u>Type*</u>	<u>From CPC Symbol (existing)</u>	<u>To CPC Symbol(s)</u>
D	F02B 37/127	<administrative transfer to F02B 37/162>
D	F02B 2037/162	<administrative transfer to F02B 37/162 INV>

* C = entries with modified file scope where reclassification of documents from the entries is involved; Q = new entries which are firstly populated with documents via administrative transfers from deleted (D) entries. Afterwards, the transferred documents into the Q entry will either stay or be moved to more appropriate entries, as determined by intellectual reclassification; D = deleted entries; F = frozen entries will be deleted once reclassification of documents from the entries is completed.

NOTES:

- Only C, D, F, and Q type entries are included in the table above.
- When multiple symbols are included in the “To” column, do not use ranges of symbols.
- For administrative transfer of documents, the following text should be used: “< administrative transfer to XX>”, “<administrative transfer to XX and YY simultaneously>”, or “<administrative transfer to XX, YY, ...and ZZ simultaneously>” when administrative transfer of the same documents is to more than one place.
- Administrative transfer to main trunk groups is assumed to be the source allocation type, unless otherwise indicated.
- Administrative transfer to 2000/Y series groups is assumed to be “additional information”.
- If needed, instructions for allocation type should be indicated within the angle brackets using the abbreviations “ADD” or “INV”: <administrative transfer to XX ADD>, <administrative transfer to XX INV>, or < administrative transfer to XX ADD, YY INV, ... and ZZ ADD simultaneously>.
- In certain situations, the “D” entries of 2000-series or Y-series groups may not require a destination (“To”) symbol, however it is required to specify “<no transfer>” in the “To” column for such cases.
- RCL is not needed for finalisation projects.

CPC NOTICE OF CHANGES 663

DATE: MAY 1, 2019

PROJECT RP0373

4. CHANGES TO THE CPC-TO-IPC CONCORDANCE LIST (CICL)

<u>CPC</u>	<u>IPC</u>	<u>Action*</u>
F02B 37/127		DELETE
F02B 2037/162		DELETE
F02B 37/162	F02B 37/16	NEW

*Action column:

- For an (N) or (Q) entry, provide an IPC symbol and complete the Action column with “NEW.”
- For an existing CPC main trunk entry or indexing entry where the existing IPC symbol needs to be changed, provide an updated IPC symbol and complete the Action column with “UPDATED.”
- For a (D) CPC entry or indexing entry complete the Action column with “DELETE.” IPC symbol does not need to be included in the IPC column.
- For an (N) 2000 series CPC entry which is positioned within the main trunk scheme (breakdown code) provide an IPC symbol and complete the action column with “NEW”.
- For an (N) 2000 series CPC entry positioned at the end of the CPC scheme (orthogonal code), with no IPC equivalent, complete the IPC column with “CPCONLY” and complete the action column with “NEW”.

NOTES:

- F symbols are not included in the CICL table above.
- T and M symbols are not included in the CICL table above unless a change to the existing IPC is desired.