

EUROPEAN PATENT OFFICE
U.S. PATENT AND TRADEMARK OFFICE

CPC NOTICE OF CHANGES 550

DATE: AUGUST 1, 2018

PROJECT RP0122

The following classification changes will be effected by this Notice of Changes:

<u>Action</u>	<u>Subclass</u>	<u>Group(s)</u>
SCHEME:		
Symbols New:	A61B	5/0036
Titles Changed:	A61B	5/055
	A61B	5/4836
Warnings New:	A61B	5/0033
	A61B	5/0036
	A61B	5/4836
Warnings Modified:	A61B	5/0033
DEFINITIONS:		
Definitions New:	A61B	5/0033
	A61B	5/0036
Definitions Modified:	A61B	5/0059
	A61B	5/05
	A61B	5/055
	A61B	5/4836

No other subclasses/groups are impacted by this Notice of Changes.

This Notice of Changes includes the following [Check the ones included]:

1. CLASSIFICATION SCHEME CHANGES

- A. New, Modified or Deleted Group(s)
- B. New, Modified or Deleted Warning(s)
- C. New, Modified or Deleted Note(s)
- D. New, Modified or Deleted Guidance Heading(s)

2. DEFINITIONS

- A. New or Modified Definitions (Full definition template)
- B. Modified or Deleted Definitions (Definitions Quick Fix)

3. REVISION CONCORDANCE LIST (RCL)

4. CHANGES TO THE CPC-TO-IPC CONCORDANCE LIST (CICL)

5. CHANGES TO THE CROSS-REFERENCE LIST (CRL)

CPC NOTICE OF CHANGES 550

DATE: AUGUST 1, 2018

PROJECT RP0122

1. CLASSIFICATION SCHEME CHANGES

A. New, Modified or Deleted Group(s)

SUBCLASS A61B - DIAGNOSIS; SURGERY; IDENTIFICATION (analysing biological material G01N, e.g. G01N33/48; obtaining records using waves other than optical waves, in general G03B42/00)

<u>Type*</u>	<u>Symbol</u>	<u>Indent Level Number of dots (e.g. 0, 1, 2)</u>	<u>Title (new or modified)</u> <u>“CPC only” text should normally be enclosed in {curly brackets}**</u>	<u>Transferred to[#]</u>
U	A61B 5/0031	2	{Implanted circuitry}	
C	A61B 5/0033	1	{Features or image-related aspects of imaging apparatus classified in A61B 5/00, e.g. for MRI, optical tomography or impedance tomography apparatus; arrangements of imaging apparatus in a room (image data processing or generation G06T)}	A61B 5/0033, A61B 5/0036
U	A61B 5/0035	2	{adapted for acquisition of images from more than one imaging mode, e.g. combining MRI and optical tomography}	
N	A61B 5/0036	2	{including treatment, e.g., using an implantable medical device, ablating, ventilating}	
M	A61B 5/055	2	involving electronic [EMR] or nuclear [NMR] magnetic resonance, e.g. magnetic resonance imaging	
C	A61B 5/4836	2	{Diagnosis combined with treatment in closed-loop systems or methods (A61B 5/0036 takes precedence)}	A61B 5/4836, A61B 5/0036

*N = new entries where reclassification into entries is involved; C = entries with modified file scope where reclassification of documents from the entries is involved; Q = new entries which are firstly populated with documents via administrative transfers from deleted (D) entries. Afterwards, the transferred documents into the Q entry will either stay or be moved to more appropriate entries, as determined by intellectual reclassification; E= existing entries with enlarged file scope, which receive documents from C or D entries, e.g. when a limiting reference is removed from the entry title; M = entries with no change to the file scope (no reclassification); D = deleted entries; F = frozen entries will be deleted once reclassification of documents from the entries is completed; U = entries that are unchanged.

NOTES:

- **No {curly brackets} are used for titles in CPC only subclasses, e.g. C12Y, A23Y; 2000 series symbol titles of groups found at the end of schemes (orthogonal codes); or the Y section titles. The {curly brackets} are used for 2000 series symbol titles found interspersed throughout the main trunk schemes (breakdown codes).
- For U groups, the minimum requirement is to include the U group located immediately prior to the N group or N group array, in order to show the N group hierarchy and improve the readability and understanding of the scheme. Always include the symbol, indent level and title of the U group in the table above.
- All entry types should be included in the scheme changes table above for better understanding of the overall scheme change picture. Symbol, indent level, and title are required for all types except “D” which requires only a symbol.

CPC NOTICE OF CHANGES 550

DATE: AUGUST 1, 2018

PROJECT RP0122

- #“Transferred to” column must be completed for all C, D, F, and Q type entries. F groups will be deleted once reclassification is completed.
- When multiple symbols are included in the “Transferred to” column, avoid using ranges of symbols in order to be as precise as possible.
- For administrative transfer of documents, the following text should be used: “< administrative transfer to XX>” or “<administrative transfer to XX and YY simultaneously>” when administrative transfer of the same documents is to more than one place.
- Administrative transfer to main trunk groups is assumed to be “invention information”, unless otherwise indicated, and to 2000 series groups is assumed to be “additional information”.

CPC NOTICE OF CHANGES 550

DATE: AUGUST 1, 2018

PROJECT RP0122

B. New, Modified or Deleted Warning notice(s)

SUBCLASS A61B - DIAGNOSIS; SURGERY; IDENTIFICATION (analysing biological material G01N, e.g. G01N33/48; obtaining records using waves other than optical waves, in general G03B42/00)

<u>Type*</u>	<u>Location</u>	<u>Old Warning notice</u>	<u>New/Modified Warning notice</u>
M	A61B 5/0033	Group A61B 5/0033 and subgroups are not complete pending a reorganisation	<u>Insert</u> a period at the end of the warning as shown below: Group A61B 5/0033 and subgroups are not complete pending a reorganisation.
N	A61B 5/0033		<u>Insert</u> the following new warning as a separate and additional entry beneath the existing warning: Group A61B 5/0033 is impacted by reclassification into group A61B 5/0036. Groups A61B 5/0033 and A61B 5/0036 should be considered in order to perform a complete search.
N	A61B 5/0036		Group A61B 5/0036 is incomplete pending reclassification of documents from groups A61B 5/0033 and A61B 5/4836. Groups A61B 5/0033, A61B 5/0036 and A61B 5/4836 should be considered in order to perform a complete search.
N	A61B 5/4836		Group A61B 5/4836 is impacted by reclassification into A61B 5/0036. Groups A61B 5/0036 and A61B 5/4836 should be considered in order to perform a complete search.

*N = new warning, M = modified warning, D = deleted warning

NOTE: The "Location" column only requires the symbol PRIOR to the location of the warning. No further directions such as "before" or "after" are required.

DATE: AUGUST 1, 2018

PROJECT RP0122

2. A. DEFINITIONS (new)

Insert the following new definitions:

A61B 5/0033

Special rules of classification

Documents in this subgroup should be also be classified according to type of imaging apparatus in other subgroups of [A61B 5/00](#).

A61B 5/0036

Definition statement

This place covers:

Imaging apparatus, for example employing electron or nuclear magnetic resonance, including surgical and therapeutic techniques to facilitate healing.

Implantable medical device may include pacemakers. Ablating includes cutting, eroding, melting, evaporating, or vaporizing. Ventilating includes oxygenating, aerating.

References

Informative references

Attention is drawn to the following places, which may be of interest for search:

for verifying the position of the patient with respect to the therapeutic radiation beam	A61N 5/1049
Diagnosis combined with treatment in closed-loop systems or methods	A61B 5/4836
Monitoring or testing the effects of treatment, e.g. of medication	A61B 5/4848

2. A. DEFINITIONS (modified)

Make the following modifications to the existing definitions:

A61B 5/0059

Limiting references

Delete: The following row from the *Limiting references* table:

Medical imaging apparatus involving image processing or analysis	A61B 2576/00
--	------------------------------

Informative references

Insert: The following two new rows in the *Informative references* table:

Features or image-related aspects of imaging apparatus	A61B 5/0033
Medical imaging apparatus involving image processing or analysis	A61B 2576/00

A61B 5/05

Definition statement

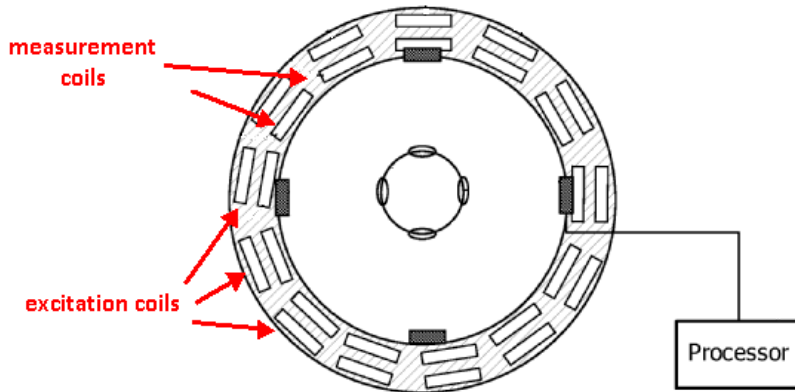
Insert: The following new text at the end of the existing text “1) Magnetic induction tomography”:

, note figure showing measurement coils, or

DATE: AUGUST 1, 2018

PROJECT RP0122

Replace: The existing image with the following new image:



Delete: The following text under the image which reads: A61B-0031.png

Insert: A period at the end of the phrase, “2) Measurements of microwaves modified by parts of the body”.

Limiting references

Delete: The following row from the *Limiting references* table:

Dental radiography	A61B 6/14
--------------------	---------------------------

Insert: The following new *Informative references* section:

Informative references

Attention is drawn to the following places, which may be of interest for search:

Features or image-related aspects of imaging apparatus	A61B 5/0033
Dental radiography	A61B 6/14

DATE: AUGUST 1, 2018

PROJECT RP0122

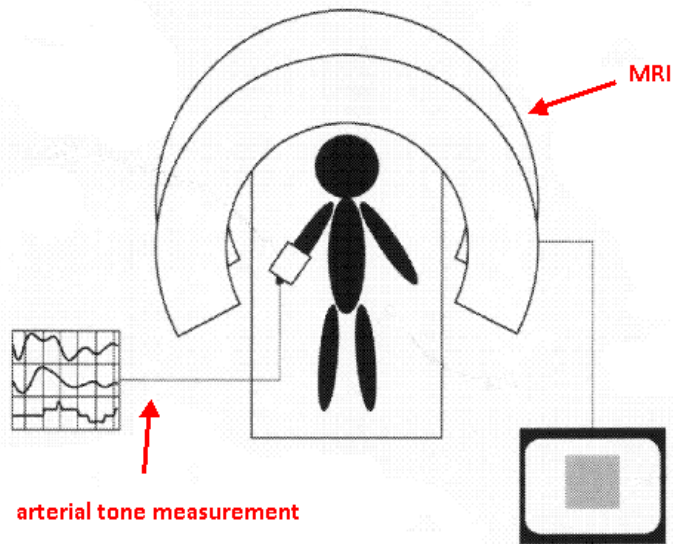
A61B 5/055

Definition statement

Replace: The existing text in the Definition statement with the following text:

A61B 5/055 mainly covers the relationship between magnetic resonance apparatus (NMR, MRS, MRI, fMRI etc.) and other devices classified in A61B 5/00. This subgroup does not include specific MR arrangements and MR processes as such which are already covered in G01R 33/20, however includes documents where the diagnostic application of MR predominates rather than the system details or the details of the MR process. The following image shows an example of an MRI device with arterial tone measurement output.

Replace: The existing image with the following new image:



Delete: The following text under the image which reads: A61B-0037.png

References

Delete: The entire *Limiting references* section.

DATE: AUGUST 1, 2018

PROJECT RP0122

Insert: The following new *Informative references* section:

Informative references

Attention is drawn to the following places, which may be of interest for search:

Features or image-related aspects of imaging apparatus	A61B 5/0033
Adapted for image acquisition of a particular organ or body part	A61B 5/004
Diagnosing or monitoring cognitive diseases, e.g. Alzheimer, prion diseases or dementia	A61B 5/4088
Touch or pain perception evaluation	A61B 5/4824
Surgical systems with NMR or MRI images on a monitor during operation	A61B 2090/374
In vivo contrast agents	A61K 49/00
Arrangements or instruments for measuring magnetic variables involving electronic or nuclear magnetic resonance, in general	G01R 33/20
Invasive instruments, e.g. catheters or biopsy needles, specially adapted for tracking, guiding or visualization by NMR	G01R 33/285
Using nuclear magnetic resonance [NMR]	G01R 33/44
With selection of signals or spectra from particular regions of the volume, e.g. in vivo spectroscopy	G01R 33/483
Signal processing systems, e.g. using pulse sequences	G01R 33/54
Image enhancement or correction, e.g. subtraction or averaging techniques, e.g. improvement of signal-to-noise ratio and resolution	G01R 33/56

DATE: AUGUST 1, 2018

PROJECT RP0122

Special rules of classification

Replace: The entire existing text in the Special rules of classification section with the following new text:

There is an overlap between the scope of [G01R 33/20](#) (or its relevant subgroup) and [A61B 5/055](#) in the sense that, depending on the disclosure of a given document, the document may have to be classified in [G01R 33/20](#) (or its relevant subgroup) only, in [A61B 5/055](#) only or in both places.

For instance:

- if the invention information of a document to be classified is primarily directed to the MR process as such (e.g. a novel pulse sequence which, according to the document, facilitates the diagnosis of a disease on the basis of the resulting MR images wherein the document merely mentions the diagnosis but does not specifically disclose its implementation in detail), the document should be classified in [G01R 33/20](#) (or its relevant subgroup) only and the additional information related to the diagnosis may be classified using the appropriate Indexing Code corresponding to [A61B 5/055](#).
- if the invention information of the document is primarily directed to the diagnosis as such (e.g. a novel way of processing MRI data in order to enable the diagnosis of a disease wherein the MRI data was acquired using a commonly known standard MRI technique), the document should be classified in [A61B 5/055](#) only.
- documents where the focus lies in diagnostic features as well as in technical details of the MR apparatus or details of the MR process should be classified in both [A61B 5/055](#) and [G01R 33/20](#).

A61B 5/4836

Definition statement

Delete: The following text from the Definition statement section:

Includes imaging for targeted therapeutic treatment.

Limiting references

Insert: The following new row in the *Limiting references* section:

CPC NOTICE OF CHANGES 550

DATE: AUGUST 1, 2018

PROJECT RP0122

Features of imaging apparatus including treatment	A61B 5/0036
---	-----------------------------

Delete: The following two existing rows from the *Limiting references* section:

Sensing and controlling the application of energy in surgical instruments.	A61B 2018/00636
Heart stimulators controlled by a physiological signal	A61N 1/365

Insert: A new informative references section as follows:

Informative references

Attention is drawn to the following places, which may be of interest for search:

Sensing and controlling the application of energy in surgical instruments.	A61B 2018/00636
Heart stimulators controlled by a physiological signal	A61N 1/365

CPC NOTICE OF CHANGES 550

DATE: AUGUST 1, 2018

PROJECT RP0122

3. REVISION CONCORDANCE LIST (RCL)

Type*	From CPC Symbol (existing)	To CPC Symbol(s)
C	A61B 5/0033	A61B 5/0033, A61B 5/0036
C	A61B 5/4836	A61B 5/4836, A61B 5/0036

* C = entries with modified file scope where reclassification of documents from the entries is involved; Q = new entries which are firstly populated with documents via administrative transfers from deleted (D) entries. Afterwards, the transferred documents into the Q entry will either stay or be moved to more appropriate entries, as determined by intellectual reclassification; D = deleted entries.

NOTES:

- Only C, D, F and Q type entries are included in the table above.
- When multiple symbols are included in the “To” column, avoid using ranges of symbols in order to be as precise as possible.
- For administrative transfer of documents, the following text should be used: “< administrative transfer to XX>” or “<administrative transfer to XX and YY simultaneously>” when administrative transfer of the same documents is to more than one place.
- Administrative transfer to main trunk groups is assumed to be “invention information”, unless otherwise indicated, and to 2000 series groups is assumed to be “additional information”.

CPC NOTICE OF CHANGES 550

DATE: AUGUST 1, 2018

PROJECT RP0122

4. CHANGES TO THE CPC-TO-IPC CONCORDANCE LIST (CICL)

<u>CPC</u>	<u>IPC</u>	<u>Action*</u>
A61B5/0036	A61B5/00	NEW

*Action column:

- For an (N) or (Q) entry, provide an IPC symbol and complete the Action column with "NEW."
- For an existing CPC main trunk entry or indexing entry where the existing IPC symbol needs to be changed, provide an updated IPC symbol and complete the Action column with "UPDATED."
- For a (D) CPC entry or indexing entry complete the Action column with "DELETE." IPC symbol does not need to be included in the IPC column.
- For an (N) 2000 series CPC entry which is positioned within the main trunk scheme (breakdown code) provide an IPC symbol and complete the action column with "NEW".
- For an (N) 2000 series CPC entry positioned at the end of the CPC scheme (orthogonal code), with no IPC equivalent, complete the IPC column with "CPCONLY" and complete the action column with "NEW".

NOTES:

- F symbols are not included in the CICL table above.
- E and M symbols are not included in the CICL table above unless a change to the existing IPC is desired.